



The Hong Kong Institute of  
Building Information Modelling  
香港建築信息模擬學會

# HKIBIM AWARD 2019





# Table of Contents

Message from the HKIBIM Chairman - Ir Francis LEUNG .....	2
<b>List of Finalist</b>	
<b>Employer Category</b>	
Grand Award - New World China Land Limited - Tianjin Chow Tai Fook Finance Centre Project Team .....	6
Merit - Airport Authority Hong Kong - Third Runway Division .....	8
<b>Contractor Category</b>	
Grand Award - Paul Y. Engineering Group Limited .....	12
Merit - Chun Wo Building Construction Ltd. ....	14
Merit - CR Construction Company Limited .....	16
<b>Consulting Firm Category</b>	
Grand Award - Advanced Construction Information Development Limited. ....	20
Grand Award - isBIM Limited. ....	22
Grand Award - Vircon Limited .....	24
Grand Award - WSP. ....	26
Merit - Ho & Partners Architects Engineers & Development Consultants Ltd. ....	28
Merit - MTECH Engineering Co., Ltd. ....	30
Merit - PWL Surveyors Limited .....	32
Merit - Ronald Lu & Partners .....	34
Merit - Wings & Associates Consulting Engineers Limited .....	36
<b>Academic Institution / Training Centre Category</b>	
Merit - Form.Welkin Limited .....	40
Merit - Middlesex University London .....	42
<b>Other</b>	
Grand - Construction Industry Council .....	46
<b>Mention</b>	
Shenzhen Asiantime International Construction Co., Ltd. ....	50
About HKIBIM Directory .....	52
About HKIBIM .....	54

# Message from the HKIBIM Chairman

---



## **Ir Francis LEUNG**

**Chairman**

**The Hong Kong Institute of Building Information Modelling**

On behalf of the Hong Kong Institute of Building Information Modelling (HKIBIM), it is my honor to welcome you to the HKIBIM Award 2019 Dinner.

Since its inauguration in 2010, HKIBIM has always been striving to provide excellent services to all. By offering practitioners with the latest industry news, information of BIM technology, and relevant training services, we aim to promote and facilitate a wider adoption of BIM technology in Hong Kong.

In 2018, the HKIBIM Award was established to recognize companies and organizations which have been actively using BIM technology in their projects. Through the Award, we uphold and advance the standard of competence for the profession, promoting the interests and recognition of our members within the industry and community.

Our five award categories: Employers; Contractors; Consulting Firms; Training Institutions; and Others, address all companies from the different stages of a project's life-cycle. All applications are assessed based on four elements: (1) number of BIM projects handled; (2) number of BIM Managers and HKIBIM Members; (3) number of BIM Awards received; and (4) BIM standards achieved.



# Message from the HKIBIM Chairman

---

I am delighted to see the many entries we have received this year, reflecting the contributions and achievements by our BIM professionals. Our judges have selected the most deserving nominees using strict guidelines to verify their competencies, including the performance and quality of work in BIM projects.

On behalf of HKIBIM, I would like to congratulate all the winners this evening for their achievements. We are also grateful to our Jury Panel for their contributions, and our sponsors for their patronage. The HKIBIM Award 2019 would not have been as successful and memorable without the generous supports.

Thank you everyone for joining us this evening, and I wish you all great success in your future endeavors.



# Employer Category

Grand Award - New World China Land Limited - Tianjin Chow Tai Fook

Finance Centre Project Team

Merit - Airport Authority Hong Kong - Third Runway Division

# Employer Category

---

## Grand Award



**新世界中國**  
New World China

**New World China Land Limited**

新世界中國地產有限公司

**Year of Establishment: 1972**

## Company Profile

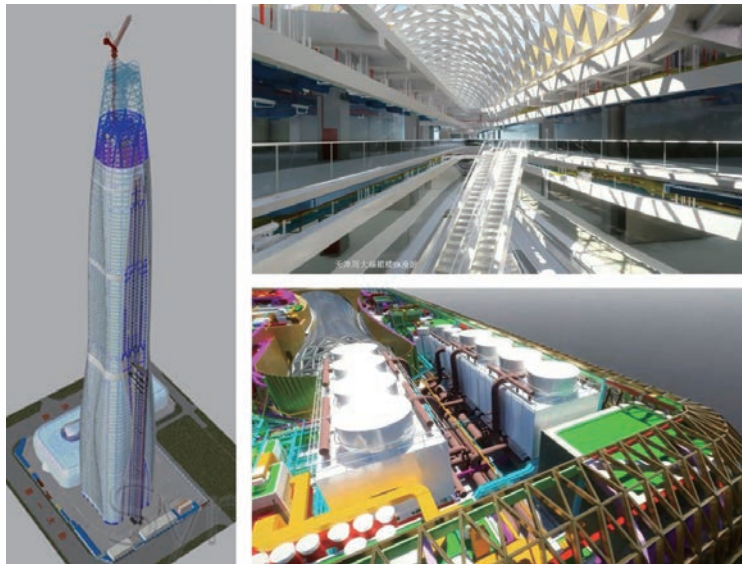
New World China Land Limited (New World China) is the flagship Mainland China property arm of New World Development Company Limited and an early Hong Kong pioneer entering the China property market. Our vision is embodied by a humanistic spirit inspiring us to create fulfilling places and thriving cities that people love to call home. Guided by insight, we inject innovation into large-scale mixed-use complexes, skyscrapers, malls, residential neighbourhoods and hotels in tier 1 and 2 cities in China, while preserving local heritage, creating sustainable developments that allow people, city and nature to flourish in harmony. We bring the “Soul of the City” to life.

# Employer Category

Tianjin Chow Tai Fook Finance Center is a mixed-use development with a total GFA of 389,980sq. m. The 530-meter-tall skyscraper will house offices, service apartments, and a five-star hotel. The tower just reached the practical completion milestone in Aug 2019.

BIM is implemented throughout the project life cycle from design optimization, detailed design, construction management, off-site prefabrication, site logistic and installation.

All the involving parties including all the consultants, all the contractors, and all the various building disciplines were mandatorily to adopt BIM for design development and collaboration. All the models of architectural, curtain wall, structural and building services disciplines were collectively uploaded to the self-developed BIM-based EBIM management platform for detailed coordination.



In this project BIM technology is highly integrated into project and construction management. This greatly provides much higher return to client, designers and contractors in terms of time, cost, quality and safety. This becomes a role model for building industry's intelligent construction and management.

The BIM application experience in Tianjin Chow Tai Fook Project become the basis to formulate China National Standard & practice code such as “ Unified standard for building information modelling” (GB/T 51212-2016) and “National Standard for building information modelling in construction (GB/T 51235-2017)”. The project also nurtured hundreds of BIM engineers & managers, which pushing China's BIM technology to the next level.

# Employer Category

## Merit



### **Airport Authority Hong Kong – Third Runway Division**

香港機場管理局 - 三跑道部門

**Year of Establishment: 1995**

## Company Profile

The Airport Authority Hong Kong (AA) is a statutory body wholly owned by the Hong Kong SAR Government. Established in 1995, the AA is responsible for the operation and development of Hong Kong International Airport (HKIA).

# Employer Category

The Three-Runway System (“3RS”) Project, is a multi-disciplinary project in terms of design and construction, including ground improvement, seawall, reclamation filling, runway and associated taxiway, tunnel, civil, building, architecture and building services associated with very unique and specialist systems such as Automatic People Mover (APM), Baggage Handling System (BHS) and airport systems in the Airfield and the Terminal Buildings.

All project stakeholders shall coordinate to provide, at a minimum, detailed design and construction up to a “Level 2 BIM” maturity level. AAHK has defined, established and implemented its own BIM Standard and Specification, BIM Matrix and LOD Specification in-house for all project delivery. These standard and specifications are defined and established by taking into account international and local standards. All 3RS design and construction projects will have a shared common goal for their respective BIM implementation to achieve requirements, which are clearly specified including using BIM directly for planning and design, clash tracking and resolution, generating 2D design and construction documentation from the BIM models, 4D construction simulation, visualization, site safety management, as-built verification (laser scanning), on-going updating of BIM models, including the meta-data input, and ultimately handing over the as-built BIM model to operation for asset management. AAHK has defined and implemented BIM model checklist and compliance checks according to AAHK BIM

Standard. These BIM requirements are now officially used in all tendering and contract procurements for all design and construction packages.

The integrated 3RS BIM models and AAHK BIM team serves as a “digital platform” for all design consultants, construction teams and 3RS project staffs to have better understanding and coordination for all interfaces issues. The work-in-progress models prepared and submitted regularly by the consultants and contractors are being continuously tracked to monitor the progress against the defined schedules.

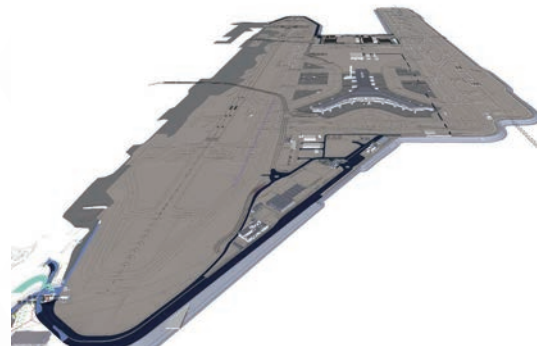
The Airport Authority has setup an internal BIM integration team to drive the BIM implementation throughout the design and construction, including training of in-house staff to ensure the application of BIM is effectively implemented across various phases and to ensure the project delivery process is in compliance with established AAHK BIM Standard. Internal BIM trainings have been conducted to over 330+ internal employees by 2019.

BIM requirements are implemented and embraced in more than forty (40) design and construction packages to-date. The number of packages are still increasing. This will become a city-scaled BIM model upon completion with participation of major stakeholders from the design and construction industries.

**Terminal 2 Expansion**



**Third Runway and Concourse**







# Contractor Category

Grand Award - Paul Y. Engineering Group Limited

Merit - Chun Wo Building Construction Ltd.

Merit - CR Construction Company Limited

# Contractor Category

## Grand Award



保華建業  
Paul Y. Engineering

**Paul Y. Engineering Group Limited**

保華建業集團有限公司

**Year of Establishment: 1946**

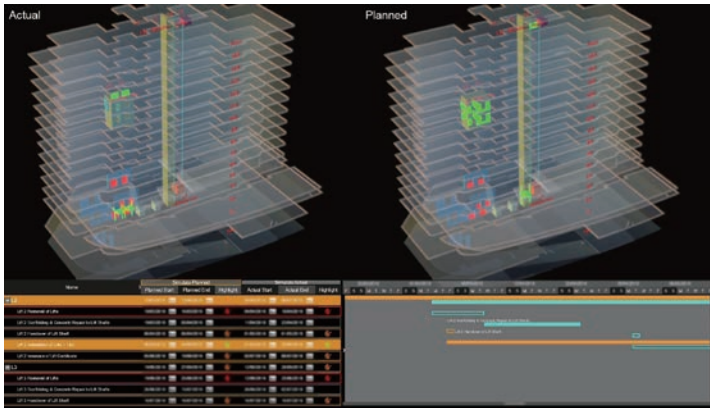
## Company Profile

Headquartered in Hong Kong, Paul Y. Engineering Group Limited is dedicated to providing full-fledged engineering and property services, with operations in Hong Kong, Beijing, Shanghai, Hangzhou, Guangzhou, Nantong, Shenzhen, Zhuhai, Macau, Singapore and Malaysia.

For over 70 years, Paul Y. Engineering has been at the heart of some of the most challenging and impactful construction projects that have shaped the iconic skylines of Hong Kong and many other cities. Our projects include commercial and residential buildings, institutional facilities, highways, airport runways, railways, tunnels, port works, water and sewage treatment facilities etc. We have a solid reputation for delivering projects that meet and exceed client expectations.

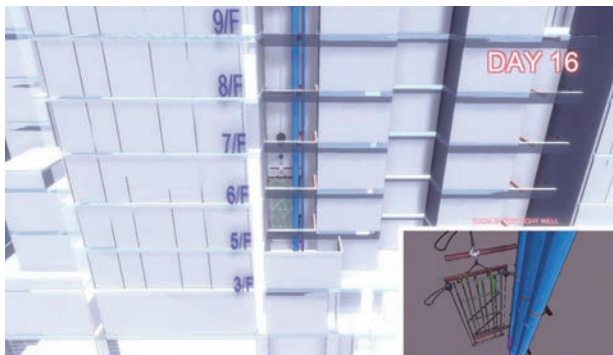
We serve our valuable client-base by delivering integrated solutions, from concept to completion and ongoing management, as well as components that best match clients' needs and expectations. Our services include engineering, development and management solutions; concept and planning; land sourcing; asset appreciation; design; construction; fitting out; E&M; commissioning; marketing and facilities management. Our diverse portfolio encompasses the entire range of civil engineering and building services that enable our clients to fulfill their goals.

## An A & A Project – Medical, Hong Kong



This recently completed project has involved alternation and addition work to the existing building for converting into Radiotherapy Centre, medical clinic, offices and ancillary facilities, as well as associated building services upgrading works, etc.

Throughout building life cycle from design, tender, construction to facility management BIM technology has been applied to this project leveraging the benefits of BIM to a new level. Managing a massive amount of accurate and up-to-date BIM data provided by various disciplines has been the most challenging job of this BIM project.



## Development of IE 2.0 Project A at Tseung Kwan O Industrial Estate, New Territories

This nearly completed project comprises an 11-storey office tower on a 2-storey podium for retail, F&B, conferencing and underground parking facilities. The project will be completed within 18 months.



BIM technology has been implemented throughout various project phases from design, construction to facility management with different Level of Development (LOD). With the aid of Common Data Environment (CDE) platform and reality capture (3D laser scanning), one of the challenging BIM deliverables, namely LOD 500 BIM models will be smoothly delivered. In smart construction application, BIM has been integrated to Internet of Thing (IoT) technology for the implementation of smart safety helmet for assess control to plant rooms.

# Contractor Category

## Merit



俊和建築有限公司  
CHUN WO BUILDING CONSTRUCTION LTD.

### **Chun Wo Building Construction Ltd.**

(A subsidiary of Chun Wo Development Holdings Limited)

俊和建築有限公司

(俊和發展集團旗下成員)

**Year of Establishment: 1968**

## Company Profile

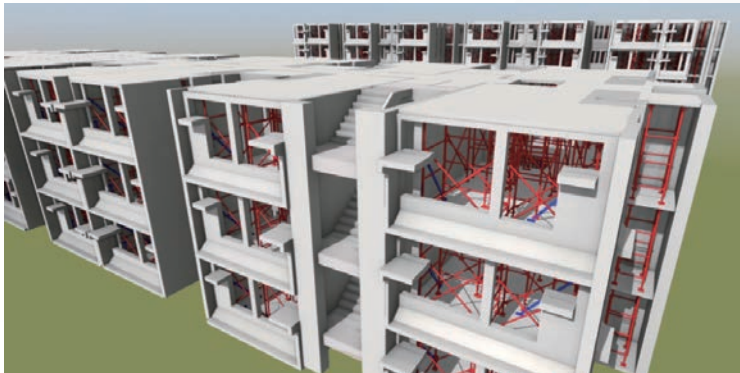
Chun Wo Development Holdings Limited (“Chun Wo”) was founded in 1968. With deep roots in Hong Kong for more than 50 years, we have accumulated extensive experience and a strong position in the construction sector enabling it to expand businesses to countries along the “Belt & Road” route in Southeast Asia and the Great Bay Area in China. Chun Wo Building Construction Ltd. (“the Company”) is a principle subsidiary of Chun Wo and our core business focuses on building construction, design and build projects and property development with professional capacity and experience to undertake large scale integrated construction projects. The types of building works undertaken by the Company encompass government and institutional buildings, offices, residential and industrial buildings, hospitals, schools, sports complexes, etc.

The Company is under Group C in the List of Approved Contractors for Public Works held under the Hong Kong Development Bureau’s list of Contractors.

# Contractor Category

## Building Construction

Chun Wo takes advantage of Building Information Modelling (BIM) technology through a series of construction simulation processes including 3D coordination, 4D simulation, and 5D cost management to figure out issues for most parties in projects. Besides, Chun Wo has also continued to drive understanding and innovation within BIM throughout the past few years. Resources are invested in new technology, especially those on the bleeding edge, for example, Modular Integrated Construction (MiC), Digital Twins, and Internet of Things (IoT).



With the full backing of its strategy board, BIM and digital construction techniques are integral to more projects. With the foundations in place, the team works diligently to improve its systems, procedures and operations even further, to embrace as many new time and cost efficiencies as possible.



# Contractor Category

## Merit



浙建集團

華營建築集團控股有限公司

CR CONSTRUCTION GROUP HOLDINGS LIMITED

華營建築有限公司

CR CONSTRUCTION COMPANY LIMITED

股份代號 Stock Code: 1582

**CR Construction Company Limited**

**華營建築有限公司**

**Year of Establishment: 1967**

## Company Profile

CR Construction Group Holdings Limited (Stock Code: 01582.HK) is one of the leading building contractors in Hong Kong with over 50 years of experience. We principally act as a main contractor in building construction works and RMAA works projects in Hong Kong, and we have accumulated considerable experience in the local market and established a reputation of a reliable building contractor for quality and complex projects. Our customers cover both the public and the private sectors, which include various government departments such as the Housing Authority and the Education Bureau, educational institutions and NGOs, as well as major listed and private property developers and other listed and private corporations.

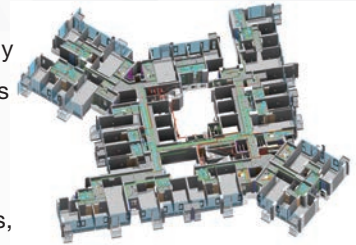
With Hong Kong as the home base, we are determined to be a people-oriented company that drives the construction industry forward. In January 2014, we became a member of the state-owned Zhejiang Construction Investment Group Co., Ltd (浙江省建設投資集團股份有限公司). To accelerate our business expansion, we were listed on the Main Board of the Stock Exchange of Hong Kong in October 2019 with stock code 1582. Our project locations currently cover Hong Kong, with a current workforce of around 700 and an annual business turnover of over HK\$4,800M in 2018.

# Contractor Category



Project : Proposed Composite Development at N.K.I.L. 6514  
Kwun Tong Town Centre  
Project Completion Date : In progress

Since 2012, Building Information Modelling (BIM) have been successfully deployed in many of CR Construction's projects; which enhanced the effectiveness for the planning, design and construction coordination process, as well as minimizing abortive works.



BIM applications, such as 3D spatial coordination, clash analysis, clear headroom analysis, 4D construction sequence simulation, QTO, visual mock-up, VR applications on walk-through have been extensively deployed which enhanced project efficiency and improved the collaboration effectiveness between client, architect, consultant and contractor.



Project : Proposed Hotel Development at TCTL38, Tung Chung, Lantau Island  
Project Completion Date : In progress







# Consulting Firm Category

Grand Award - Advanced Construction Information Development Limited

Grand Award - isBIM Limited

Grand Award - Vircon Limited

Grand Award - WSP

Merit - Ho & Partners Architects Engineers & Development Consultants Ltd

Merit - MTECH Engineering Co., Ltd.

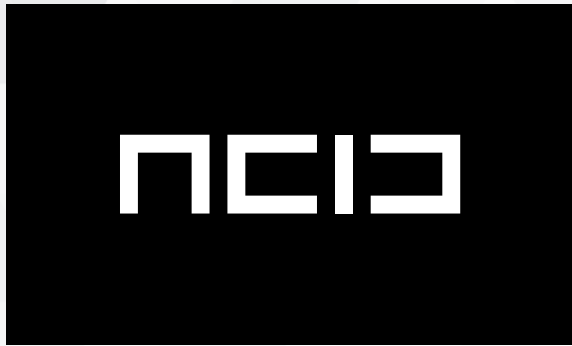
Merit - PWL Surveyors Limited

Merit - Ronald Lu & Partners

Merit - Wings & Associates Consulting Engineers Limited

# Consulting Firm Category

## Grand Award



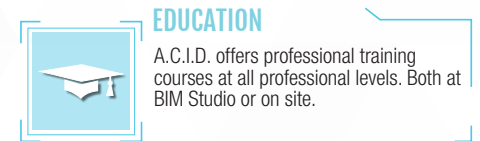
## Advanced Construction Information Development Limited Year of Establishment: 2014



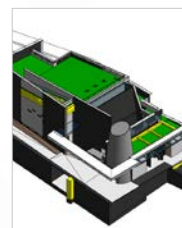
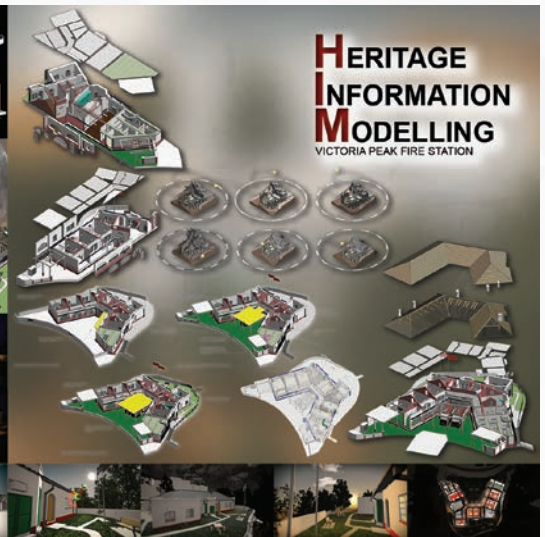
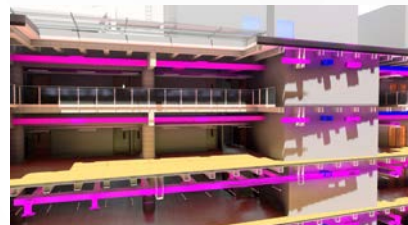
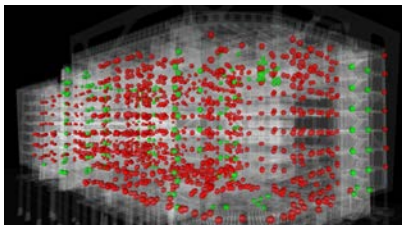
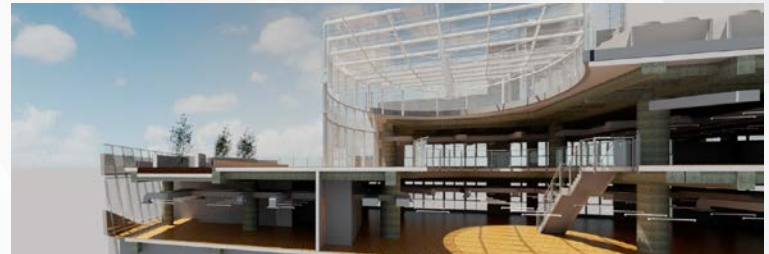
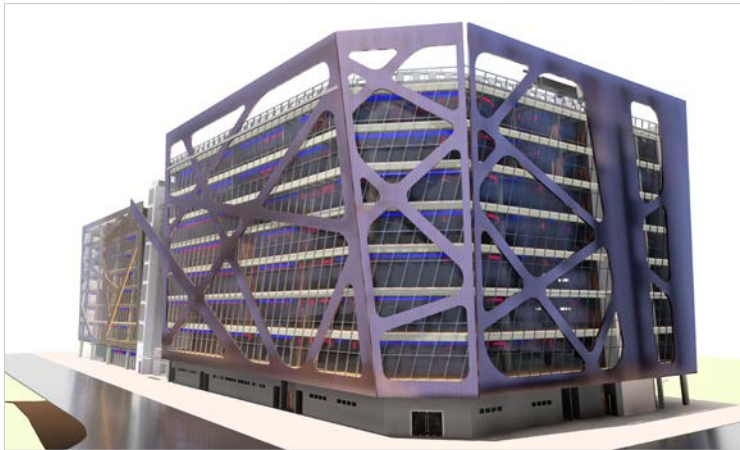
## Description / Company Profile

HONG KONG WUHAN SHENZHEN SHANGHAI BEIJING  
QIANHAI VANCOUVER KUALA LUMPUR

A.C.I.D. has been dedicated to providing clients with highest quality Architectural and Project Management services by applying advanced technologies like BIM, computational application and parametric modelling and platform developments. Clients will be offered efficient and feasible solutions on complex designs and workflow. We provide BIM services for Clients, Design team, Contractors and FM operators. Projects varies from government, commercial, residential, institutional, entertainments and infrastructure. We strive to offer professional industry-wide BIM training courses. Most of our courses are on CITF and RTPP lists. A.C.I.D. is also fully committed to the preparation of BIM standards in HK, China and worldwide.



# Consulting Firm Category



# Consulting Firm Category

---

## Grand Award



**isBIM Limited**

香港互聯立方有限公司

**Year of Establishment: 2010**

## Description / Company Profile

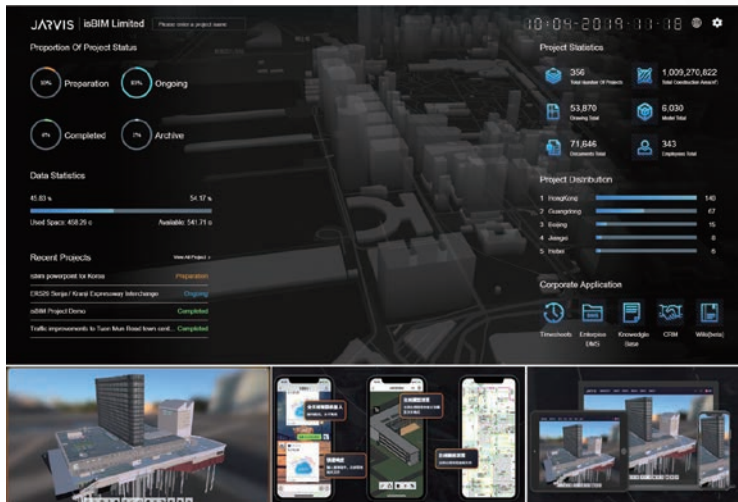
isBIM Limited (isBIM), a member of C Cheng Group 1486.HK, is a leading BIM consultancy firm in the Asia Pacific and the largest BIM company within the Greater China region since founded in 2010.

isBIM has provided professional Building Information Modeling (BIM) and Construction Modeling and Control (CMC) consulting services for more than 100 corporate units, including Hong Kong government, Asia's leading property developers, architects, contractors and educational institutions. Throughout the years, our projects have won over 40 awards on BIM application, innovation and development.



# Consulting Firm Category

In 2016, a wholly-owned subsidiary Shenzhen Qianhai Jarvis Data Consulting Co., Ltd (Jarvis) was established in China, positioning the accumulation of building big data and providing services for the digital transformation of the construction industry.) is the first data consulting company in the industry.



Jarvis, the exclusive Common Data Environment (CDE) for isBIM is considered to be the intelligent butler of the engineering industry. IsBIM is committed to create BIM data for customers that can clearly predict the future, and build an integrated knowledge platform that can transfer data into a new ecosystem. isBIM insists on innovation-driven development, promoting cooperation and mutual benefit.

# Consulting Firm Category

---

## Grand Award



雲建 VIRCON

**Vircon Limited**

雲建有限公司

**Year of Establishment: 2012**

## Description / Company Profile

Vircon Limited is a Building Information Modeling (BIM) consultancy in Hong Kong, which specialize in the implementation and management of BIM Solution for the private and public sector. Our core team consists of Professors, Architects, Engineers, Project Managers, Software Specialists and Academia/Industry Advisers. We are supported by 100+ BIM professionals and BIM engineers from Hong Kong, Macau, China, and U.S.A. As a company or project grows more sophisticated in its use of BIM, our solutions offer “room to grow” for design and engineering teams to deliver increasingly innovative projects while continuously improving performance, constructability, cost and risk controls.

# Consulting Firm Category

## 1. Chinachem Group

University Heights  
(The University Heights Redevelopment)



## 2. Hong Kong Housing Authority

Tung Tau Estate  
(Construction of Public Rental Housing Development  
at Tung Cottage Area East, Kowloon City, Hong Kong)



## 3. Sun Hung Kai Properties Limited

Mount Regency  
(Proposed Residential Development at T.M.T.L  
No.515, King Sau Lane, Tuen Mun)



## 4. Urban Renewal Authority

Shanghai Street/Argyle Street Preservation and  
Revitalisation Project

# Consulting Firm Category

---

## Grand Award



**WSP**

科進

**Year of Establishment: 1885**

## Company Profile

WSP is one of the world's leading engineering professional services consulting firms, bringing together approximately 49,500 talented people globally. We are technical experts who design and provide strategic advice on sustainable solutions, engineering projects that will help societies grow for lifetimes to come.

For over a decade, WSP has been at the forefront in the evolution and development of BIM (Building Information Modelling) technology. We utilize BIM technology and processes at different phases of the project life cycle, from sustainable demolition of old facilities, to design, construction and operation phases for our building, industrial, power & energy, transport & infrastructure and even city development projects. We also provide BIM management services to maximize the value of BIM throughout project lifecycle.

At WSP, we utilize BIM to create 3D digital models that enhance risk management processes, facilitate efficient information sharing and decision making amongst the project teams and other stakeholders, and also to realise productivity gains, shorten construction time schedules, and capitalize on significant cost savings over the project lifecycle.



# Consulting Firm Category

*The Bloomsway, Hong Kong*



*The Island Garden, Hong Kong*

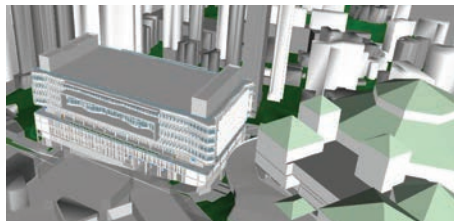
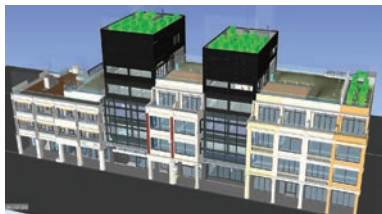


*The Mills, Hong Kong*

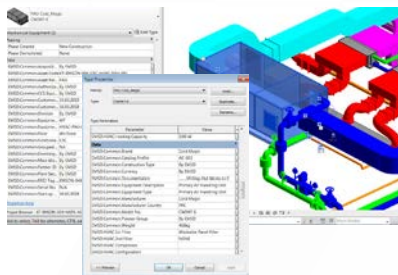
*M+ Pavilion, Hong Kong*



*618 Shanghai Street, Hong Kong*



*Hong Kong Jockey Club  
Happy Valley Clubhouse Extension,  
Hong Kong*



*BIM Data Output for  
Asset Management*



*BIM Design Review and  
Coordination*

# Consulting Firm Category

## Merit

The logo for hpa, consisting of the lowercase letters 'hpa' in a bold, dark blue, sans-serif font.

**Ho & Partners Architects  
Engineers & Development  
Consultants Ltd**

何顯毅建築工程師樓  
地產發展顧問有限公司

**Year of Establishment: 1980**

## Company Profile

hpa (Ho & Partners Architects Engineers & Development Consultants Limited) was founded in 1980 and became one of the Band 1 architectural consultants in Hong Kong in 1992. hpa was also accredited as the first wholly owned foreign company issued with a Class-A Architectural License in China in 2014. Among many other accomplishments, the company was listed 47 in the UK-published World Architecture magazine's "World's Top 200 Architectural Practices", and its projects have received many international awards, including the China Property Awards, MIPIM Awards (France), Asia Pacific Property Awards as well as 2019 BCI Asia Top 10 Architects Awards and the 2019 Hong Kong Management Association Quality Award.

hpa has a more than 10 million square metres of design footprints in more than 50 cities across 10 countries. Under the Belt and Road Initiative, hpa expanded its strong presence as well as reaching further afield globally. In 2017, hpa was invited to become a Strategic Partner of HKTDC's Belt and Road-related promotions to champion Hong Kong's role in the export of professional services.

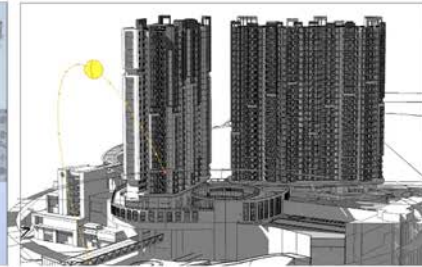
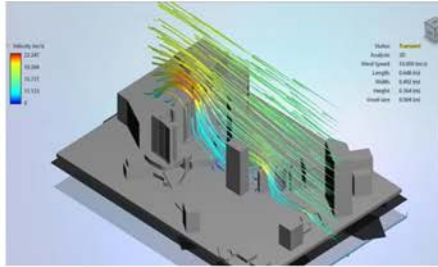
hpa has set up a small committee "Digital Transformation" to ensure that the practice can stay on top of new technology by conducting research and testing before the new technologies are adopted in the whole practice. Some of the current tests include having some of the labor-intensive tasks to be replaced by computer automation software for project and design management works as well as for drawing production enhancement works.



# Consulting Firm Category

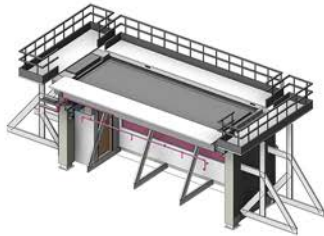


寶安上合上川路尖崗山 中國廣東省深圳市  
BIM full implementation from Design to Tender



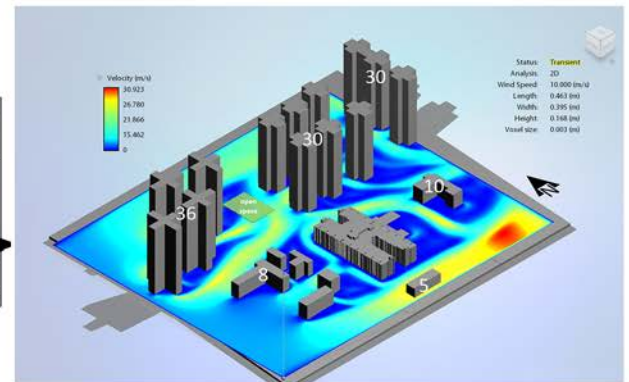
Study on Innovative Design & Smart Construction for School Hong Kong

LOD350, Navisworks Analysis, innovative MiC & BIM



Composite Development for URA at Pine/Oak Street Kowloon Hong Kong

BIM Construction to Detailed Interior Design



# Consulting Firm Category

---

## Merit



**MTECH Engineering Co.,Ltd.**  
**Year of Establishment: 1995**

## Company Profile

Established in 1995, MTECH ENGINEERING CO., LTD. is an information technology orientated company to provide and apply BIM Consulting Services & Digital Construction solutions to building construction industry who would like to adopt technology to improve their competitive advantages for the best business result through our well trained, committed, highly successful people. Our solutions cover the complete lifecycle of construction projects from design and engineering to fabrication, construction quality management and facilities management. We actively create a working environment to support our staff individual development as business professionals and technical experts. We work with each other and with our customers on the basis of open communication, trust, and mutual respect.

MTECH is driving building construction industry to new paradigm. Our strategy is comprised of architecture, know how, services, technology, support and education, enabling our client to take advantage of a one-stop shop, one-stop support opportunity and migrate their technology to a higher level without interrupting their operation efficiency.

# Consulting Firm Category

## Our offer:

1. BIM Consulting Services
  - BIM consulting services from As-Design, As-Construction to Asset Information modelling
  - BIM Auditor for setting up BIM execution practices and standard for government body, property developer, consultant and main contractor
2. Digital Construction Solution
  - Aproplan/CHECKLIST/HELPSITE – mobile Apps for site inspection, quality and facility management
  - Bricscad for BIM modelling
  - Dalux Field – 3D BIM oriented construction site and defect management
  - Dalux FM – 3D BIM oriented facility and asset management
  - Dalux Box – Common Data Environment
  - Plannerly for BIM Project Management

## Company Award

- 2018 HKIBIM Award – Certificate of Merit of Consultant Firm Category
- 2017 Our CEO – Mr. Stephen AU gOt the Outstanding PolyU Alumni 2017 Award
- 2017 Hong Kong & China Most Valuable Company for 3D Technology and Consulting Services
- 2015 Win the Autodesk BIM Award 2015 for a Commercial Building project in Tsui Luk Street developed by Sun Hung Kei Properties Ltd.
- 2008 Award 2007 100 China Innovation Enterprise Leader



## DALUX

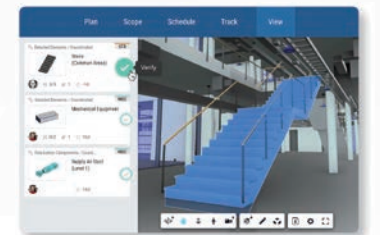
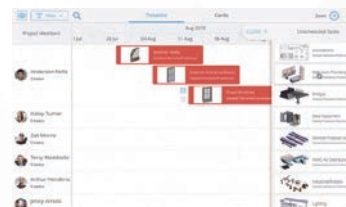
DALUX BIM Viewer – most advance viewer

DALUX Field – BIM oriented 3D Total Quality & Safety Management Platform.

DALUX FM – BIM oriented facility management

3D Collaborative Site Task Management, Safety and Facility Management to access & prevent potential construction risk or defects via 2D Plan or BIM Models to enable instant respond for preventive and corrective actions through a cloud based mobile platform for building construction industry.

Dalux gives you a real-time overview of your tasks and quick insight into the information you are looking for. Use the app to quickly see which tasks have been delivered and which remain unresolved. You can send tasks directly to your subcontractors. All subcontractors gain access to the project and can respond to the tasks simply using the app. Using Dalux to manage all deficiencies in the project saves time and ensures that all issues are resolved as needed.



## Plannerly

### BIM Project Management Platform

A cloud platform for BIM volume planning and execution that allows you to visually plan the level of detail of a project, coordinate the volume of individual parts of the project, allocate the responsible persons, and monitor the execution.

The LOD planner system is used in the following processes:

- BIM project plan
- Scope definition
- Execution control
- BIM model viewing



# Consulting Firm Category

## Merit



### **PWL Surveyors Limited**

潘威林測量師行有限公司

**Year of Establishment: 2001**

## Company Profile

PWL Surveyors has been providing professional building survey, inspection and project management services to clients since 2001. Sr. William Poon, the founder, director and the Authorized Person (A.P.), the Registered Inspector (R.I.) registered in the Buildings Department, has long adhered to values to promote the concept of sustainable development and strived to extend the life cycle of the building through effective renovations.

PWL Surveyors had achieved extraordinary achievements. Over the past 10 years, we had completed more than 500 engineering projects, more than 200 building renovations, more than 100 plans and related to alteration and additions works. We have participated 2, even 3 renovations in their building life cycle. We got proven result that the defect rate of our renovated project is below 1% after 10 year of renovation. The encouraging results were obtained by a HOKLAS laboratory, third independent party.

PWL Surveyor is also contributing to the growing of new generations of professionals. Sr. William Poon was a guest lecturer in City University of Hong Kong. There are many students of Sr. William Poon in the team of PWL Surveyors. Sr. Johnny Lau has studied the course of Sr. William Poon and has been a registered surveyor. We got various awards. We had received the honor of “Happy Working Environment 2017” from the Hong Kong Productivity Council. In addition, we are the 1st Building Surveying Company attaining Hong Kong Star Awards.

As the society increases its focus on building safety and the professionalism of surveyors, PWL Surveyors will continue to serve our customers with professionalism, implement the principles of developing talents, caring for the community and paying attention to environmental protection, so as to achieve long-term sustainable development.

# Consulting Firm Category

## Our project – Sai Wan Ho Civic Centre

The Sai Wan Ho Civic Centre situated above Sai Wan Ho MTR station, which well equipped with a Theatre, Cultural Activities Hall and Art Studios.

The objective of this project is to deliver a computation survey of the existing Sai Wan Ho Civic Centre by using laser scanning and to build up a digital model with building information and appropriate codification. Apart from the architectural and structural element insides the model, we have to insert various input, like building services element, underground utility survey around the site. According to our client information, this project worked as a pilot project for a building information modelling (BIM) for existing building.



## PWL's role as Lead Consultant

PWL role acted as lead consultant. We had to coordinate various sub-consultants smoothly in order for timely and quality delivery for the model. In this project, our challenge is to scan in the existing building when do not affected the public. We had to arrange our sub-consultant to laser scan the existing building and by using the data, our modeler shall produce BIM model based on the existing site location.

Our Building Services Engineer shall conduct survey on site for existing building services situation and marked on the model. A walkthrough had been produced to the client for their record.

# Consulting Firm Category

## Merit



### **Ronald Lu & Partners**

呂元祥建築師事務所

**Year of Establishment: 1976**

## Company Profile

Ronald Lu and Partners (RLP) is a leading multi-disciplinary architectural and interior design firm with over 40 years of committed experience to designing built environments that contribute to positive impact to communities in Hong Kong and many cities in China. As a trusted advisor to clients from both of the private and public sectors, RLP's team of experts collaborate to help our clients realise their ambitions, designing and completing aspirational and positively impactful projects which our clients and we at RLP are proud of. RLP has offices in Hong Kong, Beijing, Shanghai, Guangzhou and Shenzhen, attracted over 550 professionals to design better life together.

RLP is one of the pioneers of maneuvering BIM technology in the city. As early as 2006, we successfully transformed the use of BIM in architectural projects from being a relatively simple and self-contained process into a real-time collaborative approach with input from consultants located around the world. The well-established BIM team has developed the best practices of BIM in design authoring, discipline coordination and contract documentation. Since 2015, we have not only incorporated BIM into our formal workflow but also developed our own BIM-proficient staff to carry out BIM management from design to construction phases of a project. RLP is proud to have nurtured BIM project managers, architectural BIM coordinators and BIM designers who streamline the lifecycle of BIM-enabled projects both locally and internationally.



# Consulting Firm Category

## Xiqu Centre, Hong Kong

Nestled in the West Kowloon Cultural District, the Xiqu Centre is a world-class facility for the preservation, development and promotion of Chinese opera. Due to the complex nature of this sophisticated building typology, the design of Xiqu Centre involved a large team of experts of different disciplines from three continents. The Revit BIM platform was key to facilitating a real-time collaborative process and achieving a successful outcome. The use of BIM enabled the visualisation of design, which helped not only the team to streamline the design and coordinate building systems but also the client to review the design effectively. BIM Model was also used extensively by contractors, which played a role in minimizing the risks of errors in construction.

(in collaboration with joint venture partner, Revery Architecture)



## HKSH Eastern Medical Centre: Tsao Yin Kai Block, Hong Kong

As the heart of HKSH Eastern Medical Centre, the Tsao Yin Kai Block, with 2 gantries, will be the home of Hong Kong's first Proton Therapy (PT) System in 2022. More than introducing PT to Hong Kong, the installation and commissioning of PT will make HKSH Eastern Medical Centre a world-class hub of comprehensive oncology services. Located inside will be operating theatres, intensive care units, PET Cyclotron, clinical laboratories and other supporting units. The use of BIM is considered as a key factor to achieve successful project development throughout the project life-cycle. A BIM model, which has used for design, collaboration and construction, would be further developed for As-built BIM (LOD500) for facility management.

# Consulting Firm Category

## Merit



翱翔顧問工程師有限公司  
Wings & Associates Consulting Engineers Ltd.

## Wings & Associates Consulting Engineers Limited

翱翔顧問工程師有限公司

**Year of Establishment: 2015**

## Company Profile

WINGS is an engineering consultant company with professional engineers in wide range of expertise to offer multi-disciplinary services to the ever-evolving construction industry. Our mission is to provide high quality engineering consultancy services in “Competitive, Responsive and Approachable” manners to our clients and the local communities.

Our scope of services includes:

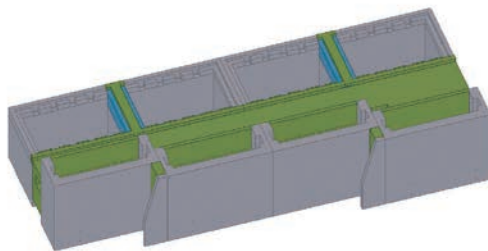
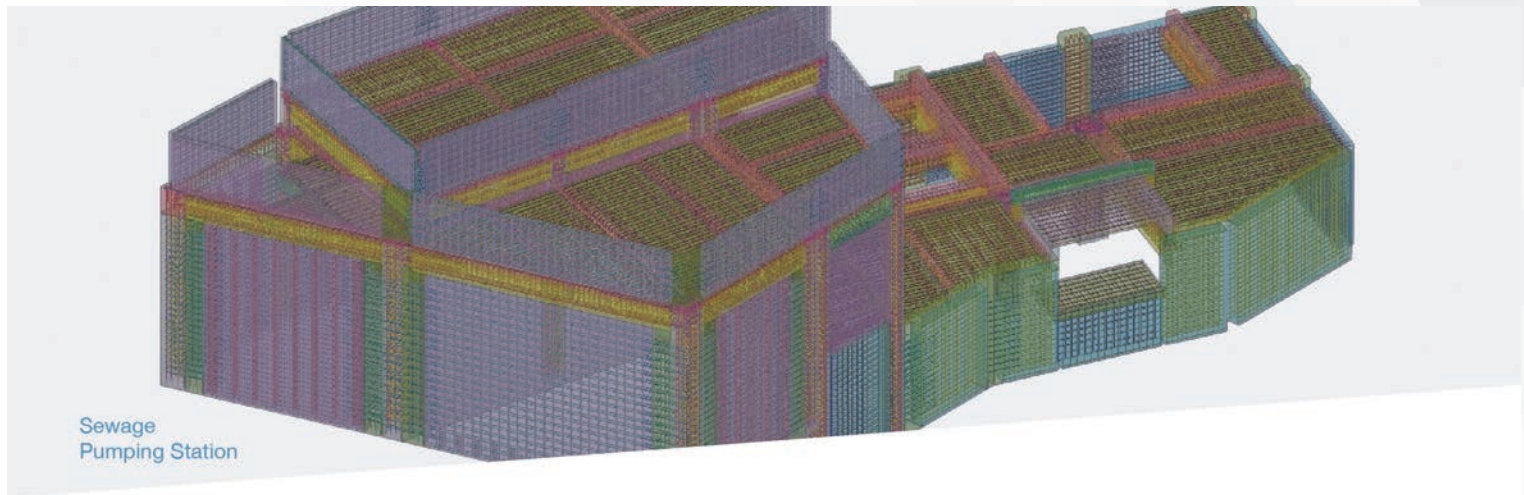
- Civil Engineering and Geotechnical Design
- Structural Engineering Design
- Building Maintenance/Condition Survey
- Project Management
- Statutory Submissions
- Alternative and Cost Saving Design
- Temporary Works Design

Our BIM Services including development of BIM Model for New and Existing Structures, Precast Segment for DfMA, Utilities and 3D Rebar Detailing.

The company operates a quality management system to ISO9001:2015 and ISO14001:2015.

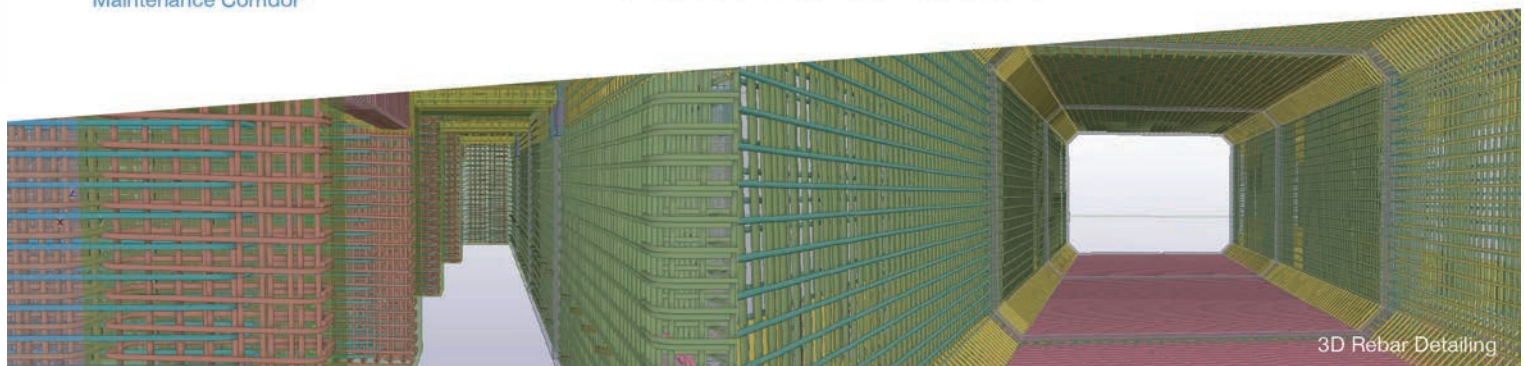


# Consulting Firm Category



## Wings & Associates Consulting Engineers Ltd.

The Project is to design the method for adoption of “Design for Manufacture and Assembly” (DfMA) for construction of Dry Weather Flow Interceptor and Sewage Pumping Station at Cherry Street Box Culvert. The application of BIM can facilitate the on-site assembly and minimize rebar clashes at joints between segments. **TEKLA Structures** is used in this Project to model various precast segments. With the unique function of TEKLA Structures, Bar Bending Schedule was prepared to Precast Segment Manufacturer to facilitate the production.





# Academic Institution / Training Centre Category

Merit - Form.Welkin Limited

Merit - Middlesex University London

## Merit



### **Form.Welkin Creative Technology Training**

天行凝方創意技能培訓


**Year of Establishment: 2009**

## Company Profile


Form.Welkin Limited is a business arm of Welkin Systems Limited, as a well-known Hong Kong IT Training company since 1990. In 2009, a group of professionals bring their insight of BIM related technology will be the future of construction industry, they form a new stream: Form.Welkin to oversee BIM/CAD/3D related training and services. We provide high-quality Autodesk official training courses at our training centres at Central and Mongkok. We earn your trust in us by being Autodesk Training Partner since 2003 and Autodesk Best Authorized Training Center in Hong Kong in 2007. The BIM curriculum developed by Form.Welkin has the widest coverage on different BIM skillset such as BIM modeling, customization, management, analysis and standard compatibility. Further achievements like Autodesk Professional Certifications are available to apply and prepare in our Centre.



# Academic Institution / Training Centre Category



專業·專注·BIM培訓  
We teach the Autodesk Way



[formwelkin.com](http://formwelkin.com) | 3605 3322

**2019**

榮獲HKIBIM Merit Award in Training Institution, 增設BIM交付管理課程系列, 強化業界實踐BIM標準

**2018**

強化並擴充BIM課程系列, 切合工程信息管理及資訊合規交換, 讓BIM教育得益每一位工程人員。

**2017**

增設課程 "BIM for Construction Managers", 讓工程管理者更有效融入BIM流程

**2013**

擴充BIM培訓系統, 常設 MEP, Structure及 Navisworks等課程, 讓學員更全面學習BIM應用

**2012**

成為Autodesk Authorised Academic Partner, 推動學界應用Autodesk軟件於專上教育。

**2008**

提供教授Revit的持續進修基金認可課程, 同期亦引入Autodesk專家認證服務。

**2007**


榮獲Autodesk頒予香港區最佳認可培訓中心名銜。

**2006**

開設 Civil 3D 課程, 並獲持續進修基金認可, 是本港最早期的BIM訓練課程

**2003**

Welkin Systems Limited 成為Autodesk Authorise Training Centre, 提供Autodesk認可培訓服務



Welkin Systems Limited

香港中環干諾道中34-37號華懋大廈2樓 (交易廣場對面)  
九龍旺角彌敦道585號富時中心3樓 (信和中心對面)

## Merit



**Middlesex University London**

密德薩斯大學

**Year of Establishment: 1878**

## Company Profile

Middlesex University London is a public university in Hendon, north-west London. The university's history can be traced back to 1878. Having merged with several other institutes, the university was consolidated in its current form in 1992.

Middlesex has a student population of over 25,000 in London. More than 140 nationalities are represented at Middlesex. Courses are delivered by the Faculty of Science and Technology, Faculty of Professional and Social Sciences, and the Faculty of the Arts and Creative Industries.

Middlesex is ranked within the top 401-500 universities in the world by the Times Higher Education World University Rankings 2020 and one of the top 100 universities in the world under 50 years old by the Times Higher Education Young University Rankings 2020.

# Academic Institution / Training Centre Category

The MSc BIM Management and Integrated Digital Delivery is renowned worldwide for its shaping of the way BIM and digital delivery management of projects is implemented in organizations worldwide. It has more than 200 alumni since its launch in 2013 from more than 23 countries around the world who are all managers and executives in their respective companies and organizations. Their fields are in architecture, civil and structural engineering, MEP/HVAC and service engineering, contractor, client and government side, legal, IT, oil and gas. We have global organizations like AECOM, BAM, Waldeck, Laing O'Rourke, ARUP who send employees from their branches around the world yearly on our programme. This year ARUP alone sent 90 employees for their Continuous Professional development (CPD) on the course. Furthermore we achieved Global awards in recognition of our impact on industry.



We have more than 40 lecturers on the programme from all around the world who provide value, input and feedback for the students on real life projects that students work on within the programme. Programme alumni are also specifically head hunted for employment by companies e.g. WSP, David Miller Architects, AECOM, ARUP etc. Several of our alumni have also won in the World Skills competition – BIM category. The programme has also inspired creation of State of the Art buildings at university created using BIM technologies which are highly sustainable with features like live walls, zero carbon materials, retractable roofs etc.



# Other

Grand - Construction Industry Council



## Grand Award



## Construction Industry Council

建造業議會

**Year of Establishment: 2007**

## Company Profile

The Construction Industry Council (CIC) was formed in 2007 under the Construction Industry Council Ordinance (Cap. 587). The CIC consists of a chairman and 24 members representing various sectors of the industry including employers, professionals, academics, contractors, workers, independent persons and Government officials.

The main functions of CIC are to forge consensus on long-term strategic issues, convey the industry's needs and aspirations to Government, as well as provide a communication channel for Government to solicit advice on all construction-related matters. In order to propagate improvements across the entire industry, CIC is empowered to formulate codes of conduct, administer registration and rating schemes, steer forward research and manpower development, facilitate adoption of construction standards, promote good practices and compile performance indicators.

CIC has set up Committees to pursue initiatives that will be conducive to the long-term development of the construction industry.



# BIM



## Centre of Excellence for BIM

The Construction Industry Council (CIC) continues to develop itself as a Centre of Excellence for Building Information Modelling (BIM), formulating strategies for market transformation and promoting cross-discipline collaboration and wider adoption of BIM. The CIC provides support to the industry in four aspects, promotion on BIM adoption, standards and guidelines, capacity and capability building, and R&D and funding support.



# Honourable Mention

Shenzhen Asiantime International Construction Co., Ltd.

# Honourable Mention

---

**亞泰國際**  
ASIAN TIME GROUP  
股票代碼: 0 0 2 8 1 1

**SHENZHEN ASIAN TIME  
INTERNATIONAL CONSTRUCTION CO.,  
LTD**

深圳市亞泰國際建設股份有限公司

**Year of Establishment:  
December 26, 1994**

## Company Profile

ATG is devoted to provide international top hotels with construction consultancy service. Profound project management experience, professional team and world standard recognized service makes us one of the most professional service providers in this field. We've provided hotel decoration construction service for more than ten international hotel management companies, more than thirty international brands and more than 20 domestic top real estate developers.

ATG has finished hundreds of construction projects across Greater China, there're many landmark projects like Four Seasons Hotel Guangzhou, Four Seasons Hotel Shenzhen, St. Regis Shenzhen, Ritz-Carlton Chengdu Hotel, Westin Chongqing Liberation Square, Marriott Nanshan Hotel, Sofitel Legend Peoples Grand Hotel Xian, Topwin Intercontinental Hotel Beijing, Park Hyatt Changbaishan, Conrad Dalian, Banyan Tree Chongqing Beibei, Pullman Lijiang Resort & Spa and etc. With years of devoted attitude and professional service, ATG wins great reputation among international renowned hotel management groups like Hilton, Marriott, Starwood, Four Seasons, Accor, IHG, Raffles, Wyndham, Banyan Tree and etc.

ATG also builds long term steady partnerships with real estate developers like United Overseas Bank Real Estate (UOL), New World Development, K. Wah International Holdings, CITIC, Wanda, Fuli, Forte, Vanke, Sino-ocean Land, Longfor, China Resources, Suning and etc; AsianTime possesses comprehensive strength to deliver construction service for global, cross-regional and multiple projects.



# Honourable Mention

ATG is dedicated to attitude and professional services, create splendid and unique experience for end-users. Our ultimate goal is to create a hotel construction management chain and promote overall value of this industry.

Application of BIM Technology in the Decoration Stage of InterContinental Hotel Wonderland Shanghai. The indoor lobby of this project is complex and diverse in shape, and the three-dimensional space is irregular. For the characteristics of this project, multi-professional design is based on complex surfaces, the application of post-design model data and the application in construction will inevitably require the intervention of BIM technology.

The amount of engineering work is huge, the design data of each region is low in repeatability, and the data information related to each major will be very large. In the preservation and extraction of data, the traditional method is laborious and effortless, and BIM technology is used to assist in the rapid extraction of information.

Carry out terrain simulation to realize standardization and modularization of deep pit site safety protection. The design of the decoration and decoration scheme is based on the design of the structure of the building body. The planning and design planning of the space, body block, color and material are based on the space of the building body and cannot be isolated. Using BIM technology to simulate the simulation of functional partitioning and segmentation, assisting in the design of visualization functions, is conducive to the designer's rationality of functional design, adjustment and improvement.

The completion of the BIM application of the construction project requires the submission of the BIM completion model. Based on the previous project completion delivery and BIM application process research, this paper uses literature review, comparison and practice to conduct in-depth research on the completion and application of BIM completion delivery model for building decoration engineering: comparing the completion delivery requirements before and after the application of BIM through analysis, combined with the engineering practice, summed up the delivery process and delivery content using BIM, and using the completed BIM model for settlement and final account application, and obtained relevant experience for the reference of architectural decoration projects.



# About HKIBIM Directory

HKIBIM aims to address the lack of a centralised database for documenting the use of BIM in Hong Kong. Through the HKIBIM Directory, all participating companies which are able to use BIM technology during different stages of a project's life-cycle, i.e., Architect firms, contractors, consultancies, software providers, will be listed. We are still welcome companies to join BIM Directory.

To know more, please visit [www.hkibimdirectory.info](http://www.hkibimdirectory.info)



## BIM Directory List 2019

### Employer

Airport Authority Hong Kong - Third Runway Division	Architectural Services Department, HKSARG
Nan Fung Development Ltd	New World China Land Limited - Tianjin Chow Tai Fook Finance Centre Project Team
Walt Disney Imagineering Asia Limited	

### Contractor

Able Engineering Company Limited	ATAL Engineering Group
Chun Wo Building Construction Ltd.	Chun Wo Construction and Engineering
CR Construction Company Limited	Hanison Construction Company Limited
Hip Hing Construction Co., Ltd	Paul Y. Engineering Group Limited

# About HKIBIM Directory

## Consulting firm

Advanced Construction Information Development Ltd	AECOM Asia Company Limited
Archiplus International (HK) Limited	Architectural Project Unit Limited
Archpolis Limited	Arup
Atkins China Limited	Aurecon Hong Kong Limited
BIM-CAP (HK) Ltd.	Build.IT Limited
GT Asia Limited (Gehry Technologies), Trimble Inc.	Ho & Partners Architects Engineers & Development Consultants Ltd
Integrated Design Limited	isBIM Limited
J. Roger Preston Limited	Leigh & Orange Ltd
MES Services Limited	MTECH Engineering Co.,Ltd.
PWL Surveyors Limited	Ronald Lu & Partners
Sane Form Limited	SYNCH Limited
Syntegrate Limited	Ten Design Group Limited
Vircon Limited	Wings & Associates Consulting Engineers Limited
Wong Tung & Partners Limited	WSP

## Vendor - Software / Hardware / Service provider

CivilConnect Limited	GRAPHISOFT Asia Limited
----------------------	-------------------------

## Training institution

Form.Welkin Limited	Hong Kong Institute of Vocational Education (IVE)
HKU School of Professional and Continuing Education (HKU SPACE)	Vocational Training Council (VTC)

## BIM organization

Autodesk Industry Advisory Board (AIAB)	HKUST BIM Lab
---	---------------

# About HKIBIM

## THE HONG KONG INSTITUTE OF BUILDING INFORMATION MODELLING 香港建築信息模擬學會

We are all fans of BIM. We share our belief that this new technology can enrich our building design and construction in many different ways. We are fully devoted to the development of BIM and the implementation of BIM in our projects. That is why we come together to form the Institute and make it a recognized platform to expedite the process.

**HKIBIM was established in Jan 2009 and now with more than 500 members.**

### The objects of the Institute are:

1. To uphold and advance the standard of competence for the profession and to promote the interests and recognition of its members within the industry and community;
2. The Institute works on the behalf of its members:
  - To promote and advance the general education, understanding, appreciation and interest of and in building information modelling management;
  - To foster general awareness, understanding and concerted efforts in the community towards the advancement of the Objects and the issues thereof;
  - To establish and advance standards of building information management practice in the industry.
  - To establish links with relevant institutes of tertiary education, Government Bureaus/Departments, Statutory bodies and other organizations;
  - To research, facilitate and promote the means of better management of building information for improving communication, co-ordination, management, productivity, delivery time, cost, and quality throughout the whole building life cycle;
  - To provide guidance on careers in building information management profession.







# The Hong Kong Institute of Building Information Modelling

General Post Office (GPO) Box No. 2259, Hong Kong

✉ [info@hkibim.org](mailto:info@hkibim.org)

📘 [hkibim](#)

🌐 [The Hong Kong Institute of Building Information Modelling \(HKIBIM\)](#)

🐦 [hkibim](#)

📷 [hkibim](#)

[www.hkibim.org](http://www.hkibim.org)



To know more about HKIBIM Award & Directory, please scan

