



The Hong Kong Institute of  
Building Information Modelling  
香港建築信息模擬學會

# HKIBIM DIRECTORY 2018



## INDEX 索引

### EMPLOYER (P10-15)

#### Architectural Services Department, HKSARG

##### 香港特別行政區政府建築署

Queensway Government Offices, 66 Queensway, Hong Kong

**T** (852) 2867 3628

**F** (852) 2867 0289

**E** archsd@archsd.gov.hk

#### Nan Fung Development Ltd

##### 南豐發展有限公司

23rd Floor, Nan Fung Tower, 88 Connaught Road C, Central, Hong Kong

**T** (852) 2521 7417

**F** (852) 2524 1276

**E** enquiries@nanfung.com

#### Walt Disney Imagineering Asia Limited

##### 華特迪士尼幻想工程 ( 亞洲 ) 有限公司

Unit 1913, 19/F, BEA Tower Millennium City 5, No. 418 Kwun Tong Road, Kwun Tong, Kowloon, HK

**T** (852) 3551 8782

**F** (852) 3551 8725

**E** WDIAsiaEvents@disney.com

## CONTRACTOR (P15-29)

### Able Engineering Company Limited

#### 安樂工程有限公司

155 Waterloo Road, Kowloon Tong, Kowloon, Hong Kong

**T** (852) 2796 0960  
**F** (852) 2796 0519  
**E** info@ableeng.com.hk

### ATAL Engineering Group

#### 安樂工程集團

13/F Island Place Tower 510 King's Road North Point Hong Kong

**T** (852) 2561 8278  
**F** (852) 2565 7638  
**E** info@atal.com

### Chun Wo Building Construction Ltd.

#### 俊和建築有限公司

5C, Hong Kong Spinners Industrial Building Phase 1, 601-603 Tai Nan West Street, Cheung Sha Wan, Kowloon, Hong Kong

**T** (852) 3758 8669  
**F** (852) 2743 1004  
**E** tender@chunwo.com

### Chun Wo Construction & Engineering Co. Ltd.

#### 俊和建築工程有限公司

5C, Hong Kong Spinners Industrial Building Phase 1, 601-603 Tai Nan West Street, Cheung Sha Wan, Kowloon, Hong Kong

**T** (852) 3758 8669  
**F** (852) 2743 1004  
**E** tender@chunwo.com

### CR Construction Company Limited

#### 華營建築有限公司

Level 32, Standard Chartered Tower of Millennium City 1, No. 388 Kwun Tong Road, Kwun Tong, Kowloon, Hong Kong

**T** (852) 2828 1515  
**F** (852) 2827 2921  
**E** crcc@czcgl.com.hk

### Hip Hing Construction Co., Ltd

#### 協興建築有限公司

11/F., Chevalier Commercial Centre, No.8 Wang Hoi Road, Kowloon Bay, Kowloon, Hong Kong

**T** (852) 2525 9251  
**F** (852) 2845 9295  
**E** email@hiphing.com.hk

### Paul Y. Engineering Group Limited

#### 保華建業集團有限公司

16/F., Paul Y. Centre, 51 Hung To Road, Kwun Tong, Kowloon, Hong Kong

**T** (852) 2831 8338  
**F** (852) 2833 1030  
**E** info@pyengineering.com

## CONSULTING FIRM (P30-71)

### Advanced Construction Information Development Ltd

A2, 35/F., TML Tower, 3 Hoi Shing Road, Tsuen Wan, New Territories.

**T** (852) 3468 5250  
**F** (852) 3585 5599  
**E** hongkong@a-c-i-d.com

### AECOM Asia Company Limited

#### 艾奕康有限公司

8/F, Grand Central Plaza, Tower 2, 138 Shatin Rural Committee Road Shatin, N.T.

**T** (852) 3922 9000  
**F** (852) 3922 9797  
**E** david.lui@aecom.com

### Architectural Project Unit Limited

Room 1218, 12/F, Chevalier Commercial Centre, 8 Wang Hoi Rd, Kowloon Bay, Hong Kong

**T** (852) 2129 0190  
**F** (852) 3520 9946  
**E** info@a-p-u.hk

### Archpolis Limited

#### 聯合都市建築設計有限公司

Rm 1203B, Henley Industrial Centre, 9 Bute Street, MongKok, Hong Kong

**T** (852) N/A  
**F** (852) 3007 2049  
**E** info@archpolis.com.hk

### Arup

#### 奧雅納工程顧問

Level 5 Festival Walk 80 Tat Chee Avenue Kowloon Tong Kowloon Hong Kong

**T** (852) 2528 3031  
**F** (852) 2865 6493  
**E** hongkong@arup.com

### Atkins China Limited

#### 阿特金斯顧問有限公司

13F, Wharf T&T Centre, Harbour City, Tsim Sha Tsui, Kowloon, Hong Kong

**T** (852) 2972 1000  
**F** (852) 2890 6343  
**E** info.hk@atkinsglobal.com

### Aurecon Hong Kong Limited

#### 澳昱冠 ( 香港 ) 有限公司

2205 Island Place Tower, F, North Point, 510 King's Rd, North Point

**T** (852) 3664 6888  
**F** (852) 3664 6999  
**E** hongkong@aurecongroup.com

### BIM-CAP (HK) Ltd.

2A Garley Building, 53 Graham Street, Central, Hong Kong

**T** (852) 2237 1588  
**F** (852) 3010 1276  
**E** bimcap@bimcap.com

### Build.IT Limited

#### 建築資訊顧問有限公司

Unit 711, Building 12W, Hong Kong Science Park Phase 3, Pak Shek Kok, Shatin, N.T., Hong Kong

**T** (852) 2752 7508  
**F** (852) 2751 9868  
**E** info@buildit.com.hk

### GT Asia Limited (Gehry Technologies), Trimble Inc.

19/F., Wui Tat Centre, No. 55 Connaught Road West, Sheung Wan, Hong Kong

**T** (852) 2625 9222  
**F** (852) 2625 9332  
**E** gting@gehrytech.com

### isBIM Limited

#### 香港互聯立方有限公司

19/F, Nathan Commercial Building, 430 Nathan Road, Kowloon, Hong Kong

**T** (852) 2382 8380  
**F** (852) 3116 2467  
**E** solution@isbim.com.hk

### Leigh & Orange Ltd

#### 利安顧問有限公司

801, Dorset House, Taikoo Place, 979 King's Road, Hong Kong

**T** (852) 2899 9000  
**F** (852) 2806 0343  
**E** info@leighorange.com

**MES Services Limited**

Unit D, 16/F, Nathan Commercial Building, 430 Nathan Road, Yaumatei, Kowloon

**T** (852) 3188 5230  
**F** (852) N/A  
**E** info@mesgroup.asia

**MTECH Engineering Co.,Ltd.**

1008, 10/F International Plaza, 20 Sheung Yuet Road, Kowloon Bay, Hong Kong

**T** (852) 2755 1832  
**F** (852) 2799 8272  
**E** mtech@mtech.com.hk

**Ronald Lu & Partners****呂元祥建築師事務所**

33rd Floor, Wu Chung House, 213 Queen's Road East, Wanchai, Hong Kong

**T** (852) 2891 2212  
**F** (852) 2834 5442  
**E** info@rlphk.com

**SYNCH Limited****同訊顧問有限公司**

Block A, 2/F, Hong Kong Industrial Building, 444-452 Des Voeux Road West

**T** (852) 6399 4950  
**F** (852) N/A  
**E** contact@synch.space

**Syntegrate Limited****先機工程顧問有限公司**

Unit B, 15/F CMA Building, 64 Connaught Rd Central, Central, Hong Kong

**T** (852) 6502 2403  
**F** (852) 2276 4150  
**E** lionel@syntegrate.build

**10 DESIGN**

3F, East Town Building, 41 Lockhart Road, Wan Chai, Hong Kong

**T** (852) 3975 2010  
**F** (852) 3975 2000  
**E** info@10design.co

**Vircon Limited****雲建有限公司**

Unit 701, 7th Floor, Pioneer Place, No. 33 Hoi Yuen Road, Kwun Tong, Hong Kong

**T** (852) 2617 2660  
**F** (852) 2617 2990  
**E** info@vircon.com.hk

**Wong Tung & Partners Limited****王董建築師事務所有限公司**

18/F, Cityplaza 3, Taikoo Shing, Hong Kong

**T** (852) 2803 9888  
**F** (852) 2513 1728  
**E** hongkong@wongtung.com

**WSP****科進**

7/F One Kowloon, 1 Wang Yuen Street, Kowloon Bay, Hong Kong

**T** (852) 2579 8899  
**F** (852) 2856 9902  
**E** info.hk@wsp.com

## VENDOR - SOFTWARE / HARDWARE / SERVICE PROVIDER (P72-75)

### CivilConnect Limited

譽鋒顧問有限公司

Unit 2302, 23/F, New World Tower 1, 18 Queen's Road Central, Hong Kong

**T** (852) 2628 0933

**F** (852) 3005 6156

**E** info@civilconnect.com.hk

### GRAPHISOFT Asia Limited

圖軟亞洲有限公司

Admiralty Centre, Tower 2/Level 11, 18 Harcourt Road, Admiralty.

**T** (852) 3975 3260

**F** (852) N/A

**E** mail@graphisoft.com.hk

## TRAINING INSTITUTION (P76-83)

### Form.Welkin Limited

#### 天行凝方有限公司

2/F, Chinachem Tower, 34-37 Connaught Road Central, Hong Kong

**T** (852) 3605 3322  
**F** (852) 3605 3399  
**E** info@formwelkin.com

### Hong Kong Institute of Vocational Education (IVE)

#### 香港專業教育學院

IVE BIM Centre, Room 216, IVE (Morrison Hill), 6 Oi Kwan Road, Wan Chai, Hong Kong

**T** (852) 2435 9423  
**F** (852) N/A  
**E** edit@vtc.edu.hk

### HKU School of Professional and Continuing Education (HKU SPACE)

#### 香港大學專業進修學院

HKU SPACE Island East Campus, 494 North Point, Hong Kong

**T** (852) 3762 0070  
**F** (852) 2214 1870  
**E** paula.lee@hkuspace.hku.hk

### Vocational Training Council (VTC)

#### 職業訓練局

VTC Tower, 27 Wood Road, Wan Chai, Hong Kong

**T** (852) 2835 4559  
**F** (852) N/A  
**E** clo@vtc.edu.hk

## BIM Organization (P84-87)

### Autodesk Industry Advisory Board (AIAB)

#### 歐特克行業顧問委員會

Suite 1405, 14 Floor, Great Eagle Centre, 23 Harbour Road, Wanchai, Hong Kong

**T** (852) 2358 8186

**F** (852) 2358 1534

**E** cejcheng@ust.hk

### HKUST BIM Lab

#### 香港科技大學 BIM 實驗室

Department of Civil and Environmental Engineering, The Hong Kong University of Science and Technology, Clear Water Bay, Kowloon, Hong Kong

**T** (852) 2358 8186

**F** (852) 2358 1534

**E** cejcheng@ust.hk



# FOREWORD

The Hong Kong Institute of Building Information Modelling (HKIBIM) Directory has been created to provide a comprehensive database of all companies which include BIM processes to create and manage the information of construction projects. Housing Authority first introduced BIM technology in 2006 and has since then progressed along with the construction industry throughout the years. Due to the continuous usage of BIM technology, we can boost productivity, and reduce risks and costs in the design of construction.

To further enhance the value of BIM technology, the applications will be moving towards a more integrated and intelligent manner. As stated by the Chief Executive in her Policy Address initiative, the Government has officially adopted BIM technology in all major capital works projects starting from 2018. In particular, HKIBIM strives to address the lack of a centralized database for the documentation of BIM involvement of both government and private developers in Hong Kong. Through the HKIBIM Directory, all participating companies which are include in different stages of a project's life-cycle, i.e., architect firms, contractors, consultancies, software providers, training institutions will be listed. In addition to tracking BIM usage, we would also like to collect data more accurately to analyse how widely BIM is used in Hong Kong to ultimately provide better services for our community.

Running and scaling a business will always be challenging, but having a solid foundation of smoothly operating practices will result in a long-lasting business. Fortunately, HKIBIM makes every effort to offer a consistently great service to all of companies. By providing our knowledgeable members with the highest levels of technology and training services, we succeed in improving enterprise efficiency and delivery processes. This way, HKIBIM has continued to uphold professional standards with an aim to provide a strong voice for all industry practitioners.



## Architectural Services Department, HKSARG 香港特別行政區政府建築署

Queensway Government Offices, 66 Queensway, Hong Kong

**Tel** (852) 2867 3628    **Email** archsd@archsd.gov.hk

**Fax** (852) 2867 0289    **Website** <https://www.archsd.gov.hk/>

### Company Data

**Year of Establishment** 1986

**Total No. of Staff** 1800

### Company Profile

The Architectural Services Department performs three core functions in relation to Government-owned and Government-funded facilities in the following programme areas:

1. Monitoring and Advisory Services
2. Facilities Upkeep
3. Facilities Development

Our department is committed to collaborating with our industry partners, user departments and stakeholders in developing and maintaining the public facilities for providing a better service to the general public. We provide professional and technical advice to the Government and quasi-government organisations and to oversee subvented and entrusted project.





## 南豐集團 NAN FUNG GROUP

### Nan Fung Development Ltd 南豐發展有限公司

23rd Floor, Nan Fung Tower, 88 Connaught Road C, Central, Hong Kong

**Tel** (852) 2521 7417

**Email** enquiries@nanfung.com

**Fax** (852) 2524 1276

**Website** <http://www.nanfung.com/>

#### Company Data

**Year of Establishment** 1954

**Total No. of Staff** Above 500

#### Company Profile

Nan Fung Development Limited is a subsidiary of Nan Fung Group, which was founded in 1954 and is one of the largest privately-held conglomerates in Hong Kong with global interests in real estate development and investment, hotels, shipping and holds a well-diversified, substantial financial investment portfolio. The Group has completed over 165 real estate projects including residential, commercial and industrial buildings and is awarded “BCI Asia – Top 10 Developers in Hong Kong” again for 2018.

Nan Fung’s core values “Quality, Value, Innovation and Service” guides us in our business activities. In recent years, Nan Fung has expanded its investment focus on ICE (Innovation, Creativity and Entrepreneurship), exemplified by its signature project, the Mills, a revitalization of its textile factories into a hub promoting tech-style and destination for innovation, culture and learning.

The Mills, Tsuen Wan



Commercial Development at  
Kai Tak Area 1F Site 2, Kai Tak



LP6, Tseung Kwan O



8 Deep Water Bay Drive,  
Deep Water Bay





## Walt Disney Imagineering Asia Limited 華特迪士尼幻想工程 ( 亞洲 ) 有限公司

Unit 1913, 19/F, BEA Tower Millennium City 5, No. 418 Kwun Tong Road, Kwun Tong, Kowloon, HK

**Tel** (852) 3551 8782

**Email** [WDIAAsiaEvents@disney.com](mailto:WDIAAsiaEvents@disney.com)

**Fax** (852) 3551 8725

**Website** Nil

### Company Data

**Year of Establishment** 2016

**Total No. of Staff** Above 300

### Company Profile

Walt Disney Imagineering dreams up, designs and builds all Disney theme parks, attractions, resort hotels, and cruise ships worldwide. Walt Disney Imagineering Asia specifically focuses on development at the Disney properties located in Asia – Hong Kong Disneyland Resort, Shanghai Disney Resort and Tokyo Disney Resort – along with new opportunities throughout the region. Imagineers from Walt Disney Imagineering Asia collaborate regularly with colleagues at the global Walt Disney Imagineering headquarter office in California.

### The Application of BIM Technology at Walt Disney Imagineering Asia



Art Concept Only © Disney

## The Application of BIM Technology at Walt Disney Imagineering Asia



The new design of Hong Kong Disneyland's Castle is a reflection of the unique personality of the city it lives in. It will feature a seamless blend of styles inspired by different times and cultures, while paying tribute to Disney Princess stories. As the park's centrepiece, transforming the castle from its current scale to something more magnificent is a unique and challenging undertaking whilst preserving the original Sleeping Beauty Castle. BIM was fundamental on many different layers and utilised for so many different strategies to gel a cohesive vision of the final outcome that all stakeholders could input into and drive the design process. A comprehensive BIM execution plan was prepared involving the team to define the roles and responsibilities of the project participants, BIM uses & objectives, BIM deliverables, expectation of Level of Development ("LOD"), and BIM process & modelling methodology for this project.

One of the most complex aspects of this project was working with a concept that started with an idea using an architectural language that has an incredible amount of creative embellishment and ornamentation. Building a castle in BIM presented unique challenges insofar as the external appearance needs to appear traditional whilst modern construction techniques needed to be applied behind the surface.



## Able Engineering Company Limited 安保工程有限公司

155 Waterloo Road, Kowloon Tong, Kowloon, Hong Kong

**Tel** (852) 2796 0960    **Email** info@ableeng.com.hk

**Fax** (852) 2796 0519    **Website** <http://www.ableeng.com.hk/>

### Company Data

**Year of Establishment** 1976

**Total No. of Staff** 400

### Company Profile

Able Engineering Holdings Limited has been listed on Main Board of Hong Kong Stock Exchange since 20 February 2017 (Stock Code: 1627). We are a well-established multi-discipline construction corporation in building construction, repair, maintenance, alternation & addition works (RMAA), building conversion, design and build and fitting out works. Our Group, including our subsidiaries, Able Engineering Company Limited and Able Building Construction Limited, have developed a sustainable relationship with our clients by providing prompt response and quality services. With the established reputation and over 40 years of work experience in Hong Kong, ABLE has obtained a remarkable number of awards and achievements from different sectors. These accomplishments have reflected our company's good implementation on various policies such as safety and health, environmental, quality control, energy, integrated management system and social responsibility, etc.









## ATAL Engineering Group 安樂工程集團

13/F Island Place Tower 510 King's Road North Point Hong Kong

**Tel** (852) 2561 8278    **Email** info@atal.com

**Fax** (852) 2565 7638    **Website** www.atal.com

### Company Data

**Year of Establishment** 1977

**Total No. of Staff** 2200

### Company Profile

ATAL is a leading electrical and mechanical (E&M) engineering group in Hong Kong. We provide multi-disciplinary and comprehensive E&M engineering and technology services that attain full customer satisfaction and are trusted for our quality, professional, excellence and innovation. Throughout our development, we have been driven by our vision to becoming an innovative, leading and sustainable multi-disciplinary engineering group. We strive to ensure the quality, timeliness and cost-efficiency of our services, from which we have gained trust and respect from our customers.

Our principal business encompasses building services for a wide range of buildings, data centres, healthcare and infrastructure facilities projects to environmental engineering. We have also branched out to cover information, communications, and building technologies as well as lifts and escalators.

For over 40 years, ATAL has left its mark on numerous signature commercial and residential developments, environmental and infrastructure projects in Hong Kong, Macau and Mainland China. We have built up an extensive client network in a broad spectrum of sectors with our one-stop E&M capability.

Our clients include leading property developers and construction companies, companies in the banking, healthcare, education, information technology, government and public organisations. Our business also reaches out to cities in Asia-Pacific, Europe, North and South Americas, Australia, Middle East and Africa.

### Subsidiary Companies

- ATAL Engineering Ltd.
- ATAL Building Services Engineering Ltd.
- Analogue Technical Agencies Ltd.
- ATAL Technologies Ltd.
- ATAL Data Centre Infrastructure Ltd.
- Anlev Elex Elevator Ltd.
- Anlev (HK) Ltd.
- ATAL Engineering (Shanghai) Ltd.
- Analogue Technical Agencies (Shanghai) Ltd.
- ATAL Engineering (Macao) Ltd.
- ATAL Building Services (Macao) Ltd.
- Analogue Building Services (Macao) Ltd.





## Bring Engineering to Life

At ATAL, we envision a world in which smart engineering solutions, intelligent building system, and environmentally sound practices make life better for all. We are experienced in integrating Building Information Modelling (BIM) technology into Building Performance Simulations (BPS) and Design for Manufacture & Assembly (DfMA) to add value in all stages of our engineering projects. These enable us to bring high quality and cost-effective building services for clients through:

- Effective communications with stakeholders through central data
- Reduced change of orders facilitated by early detection of problems
- Well managed facilities construction with prefabrication and modularisation
- Reduced waste of resources by optimising construction schedules
- Accurate installation supported by 3D scanning and layout technology

### ATAL Engineering Group

Tel: (852) 2561 8278 | Email: [info@atal.com](mailto:info@atal.com) | [www.atal.com](http://www.atal.com)



## Chun Wo Building Construction Ltd. 俊和建築有限公司

5C, Hong Kong Spinners Industrial Building Phase 1, 601-603 Tai Nan West Street, Cheung Sha Wan, Kowloon, Hong Kong

**Tel** (852) 3758 8669    **Email** tender@chunwo.com

**Fax** (852) 2743 1004    **Website** www.chunwo.com

### Company Data

**Year of Establishment** 1968

**Total No. of Staff** 600

### Company Profile

Chun Wo Building Construction Ltd. is a principle subsidiary of Chun Wo Construction Holdings Limited which was founded in 1968 and celebrates the 50th anniversary of its establishment this year. The core business of Chun Wo Building Construction Ltd. focuses on building construction, design & build projects and property development with professional capacity and experience to undertake large scale integrated construction projects. The company is under Group C in the List of Approved Contractors for Public Works held under the Hong Kong Development Bureau's list of Contractors.

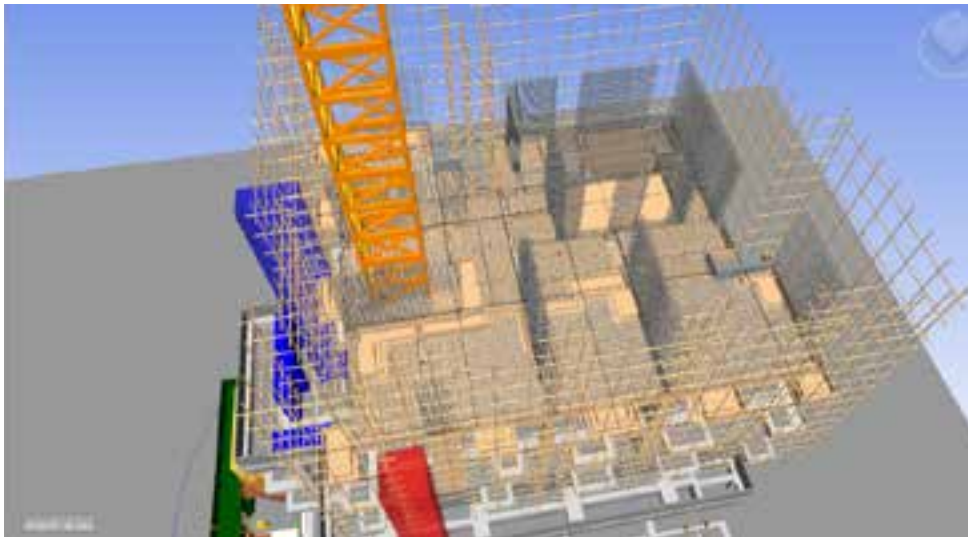
**Some of our projects shown as below are the showcases for the demonstration of our passion, perseverance, prospect towards BIM.**



Wang Fu Court, Wang Yip Street West, Yuen Long  
Client : Hong Kong Housing Authority  
Project Period : Oct 2013 to Dec 2016

New Territories West Regional Officer and Water Resources Education Centre of Water Supplies Department, Tin Shui Wai  
Client : Architectural Services Department  
Project Period : Aug 2015 to Feb 2018





The Luna, 12-24 Lun Fat Street, Wan Chai  
 Client : Vanke Property Agency Limited  
 Project Period : May 2016 to Feb 2018



Breast Cancer Foundation Kowloon Centre, Ngau Chi Wan  
 Client : Hong Kong Breast Cancer Foundation  
 Period : Sep 2016 to Aug 2017



Kwai Chung Hospital Day Recovery Centre, Kwai Chung  
 Client : Architectural Services Department  
 Period : Jun 2016 to present



## Chun Wo Construction & Engineering Co. Ltd. 俊和建築工程有限公司

5C, Hong Kong Spinners Industrial Building Phase 1, 601-603 Tai Nan West Street, Cheung Sha Wan, Kowloon, Hong Kong

**Tel** (852) 3758 8669    **Email** tender@chunwo.com

**Fax** (852) 2743 1004    **Website** www.chunwo.com

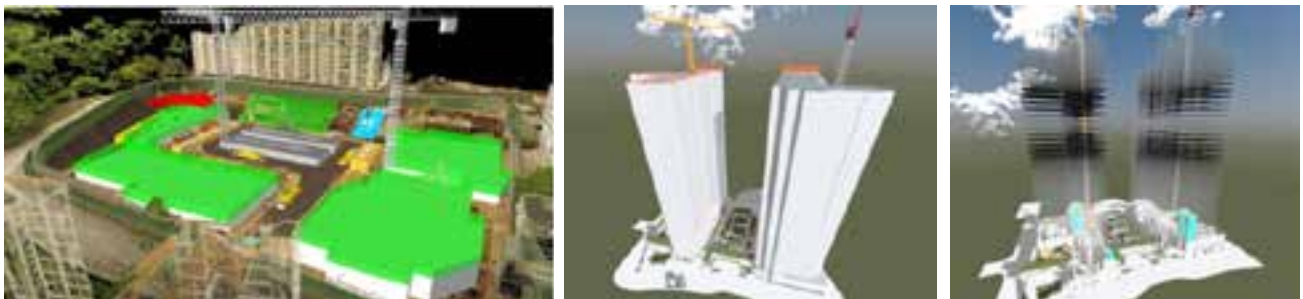
### Company Data

**Year of Establishment** 1968

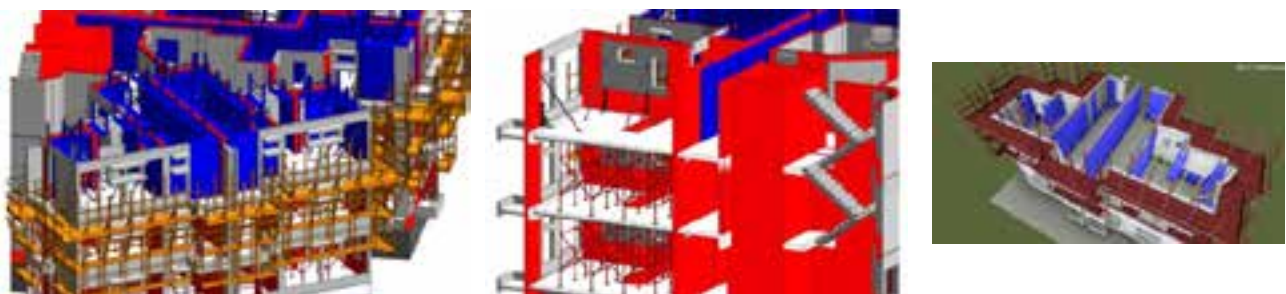
**Total No. of Staff** 2700

### Company Profile

Chun Wo Construction & Engineering Co. Ltd. is a subsidiary of Chun Wo Construction Holdings Company Limited leveraging its expertise in a number of large-scale integrated construction projects and which has a strong track record of success across a wide range of activities. Chun Wo Construction & Engineering Co. Ltd. is including Buildings, Civil Engineering, Civil Engineering Joint Venture, Foundations, Fitting-out Works, E&M Engineering, Maintenance, Waterworks etc. Chun Wo's team of dedicated construction professionals has risen to the challenges associated with a diverse buildings portfolio, and also has staff qualified in renovations and repairs of all types, bringing added value to every commercial, institutional, educational, and residential project. By securing registration and accreditation in project management and construction methodologies, including major construction registrations issued by the Hong Kong Government and statutory bodies, as well as those required by the Government in Mainland China, we have been able to engage in and successfully complete numerous landmark projects.



Construction of Public Rental Housing Redevelopment at Pak Tin Estate Phases 7 and 8 at Pat Wan Street, Sham Shui Po, Kowloon



Main Contract for Subsidized Sale Flats Project at Shatin Area 36C



亞洲聯合基建  
ASIA ALLIED INFRASTRUCTURE

俊和  
CHUN WO

50  
YEARS  
週年 SINCE  
1968



元朗宏業西街居者有其屋建造工程  
Construction of Home Ownership Scheme at  
Wang Yip Street West, Yuen Long



安達臣道石礦場用地發展的土地平整及基礎建設工程  
Site Formation and Infrastructure Works for Development of Anderson Road Quarry Site



建築署物業事務處負責的斜坡的保養工程定期合約(香港島及離島(南))  
Term Contract for the Maintenance of Slopes for ASD  
(HK Island & Outlying Islands (South))





**華營建築有限公司**  
CR CONSTRUCTION COMPANY LIMITED  
浙建集團

## CR Construction Company Limited 華營建築有限公司

Level 32, Standard Chartered Tower of Millennium City 1, No. 388 Kwun Tong Road, Kwun Tong, Kowloon, Hong Kong

**Tel** (852) 2828 1515

**Email** crcc@czcgl.com.hk

**Fax** (852) 2827 2921

**Website** www.cr-construction.com.hk

### Company Data

**Year of Establishment** 1968

**Total No. of Staff** Above 300

### Company Profile

CR Construction Company Limited, (formerly known as China Resources Construction Co. Ltd. from 1999 onwards and T. S. Wong & Co., Ltd. before 1999), was established in 1967 carrying out construction business. CR construction has accumulated considerable experience in the local market and established a reputation of a reliable building contractor for quality and complex projects. In January 2014, Zhejiang Construction Investment Group Corporation, Ltd. acquired CR Construction from China Resources and became its ultimate parent company.

### OUR VISION

With Hong Kong as the home base, to be a people-oriented company to drive the construction industry forward.

### OUR NORM

#### Quality

We believe that quality is never an accident; it is always the result of high intentions, sincere effort, intelligent direction, and skillful execution; it represents the wise choice of many alternatives.

#### Safety

Our safety program allows employees to work faster and with a higher level of quality because the threat of accidents is greatly reduced. We employ our standard safety programs throughout all phases of construction. This program is based on one simple motto, "Work Safe or Don't Work!".

#### Environmental

It is also our common goal to support environmental protection and prevention of pollution in balance with socio-economic needs and address the needs of a broad range of interested parties. We understand that this is our duty to conserve and improve the environment in the long run.



▲ Campus Development of Caritas Institute of Higher Education



▲ Main Contract for Campus Development of Chu Hai College of Higher Education

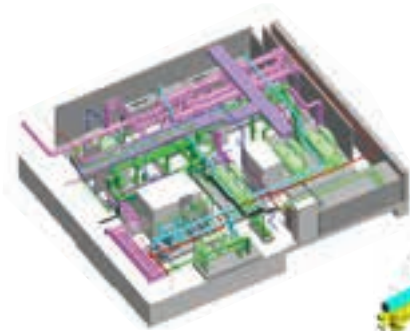


▲ Main Contract for Sub-Structure and Superstructure for the Proposed China Unicom (Hong Kong) Global Center

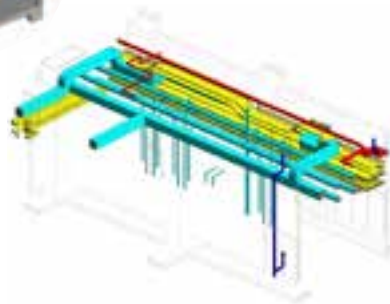


## BUILDING INFORMATION MODELING (BIM) APPLICATIONS

To cater for the fast track nature of the projects and to enhance the effectiveness of coordination, the technique of BIM was applied to perform pre-view of mock-up areas as well as coordination of architectural, structural and MEP elements for of the building with congested condition; where clashes were detected and spatial analysis were performed.



▶ BIM MEP Coordination



▲ Construction Method Simulation

BIM models were produced by our BIM Team in collaboration with our project team. The successful deployment of BIM applications in construction planning, coordination, clash detection, mock-up preview and 4D construction simulation animation were demonstrated in many of our projects.



▲ Rendering from BIM Model



▲ BIM Walkthrough



## Hip Hing Construction Co., Ltd 協興建築有限公司

11/F., Chevalier Commercial Centre, No.8 Wang Hoi Road, Kowloon Bay, Kowloon, Hong Kong

**Tel** (852) 2525 9251

**Email** email@hiphing.com.hk

**Fax** (852) 2845 9295

**Website** <https://www.hiphing.com.hk/en/>

### Company Data

**Year of Establishment** 1961

**Total No. of Staff** Above 300

### Company Profile

Since being established in 1961, Hip Hing Construction Co., Ltd. (Hip Hing) has grown to become one of the leading contractors in Hong Kong. During the past 57 years, Hip Hing has been trusted by our clients to construct many of the landmark buildings which define Hong Kong. Our five decades of experience and expertise in the design, procurement, engineering and construction disciplines enables us to provide comprehensive project delivery services.

Hip Hing has been embracing advances in technology to provide professional construction services that meet our clients' needs. For example, Hip Hing has its own internal BIM team to leverage new technological advancements for operation efficiency. Apart from deployment of Building Information Modelling (BIM), we also introduced virtual reality (VR), 3D scanning, 3D printing, 3D holography, drone for aerial photography/ videography and other applications to deliver innovative and sustainable solutions.



THE HIP HING SPIRIT

Committed,  
Professional  
and United

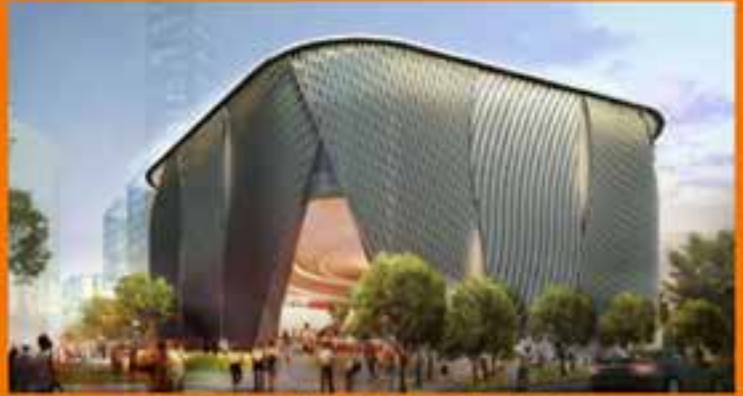


Registration No.: SSC7/98, SC27(1), 37/98, SC25(1), 36/98





8 Bay East



Xiqu Centre for West Kowloon Cultural District



Proposed Development at Tung Chung Town Lot No. 2 and 11



Residential Development at Lohas Park Package 6



West Kowloon Government Offices in Yau Ma Tei



Po Heung Estate



Happy Valley Clubhouse Extension of The Hong Kong Jockey Club



保華建業  
Paul Y. Engineering

## Paul Y. Engineering Group Limited 保華建業集團有限公司

16/F, Paul Y. Centre, 51 Hung To Road, Kwun Tong, Kowloon, Hong Kong  
**Tel** (852) 2831 8338    **Email** info@pyengineering.com  
**Fax** (852) 2833 1030    **Website** www.pyengineering.com

### Company Data

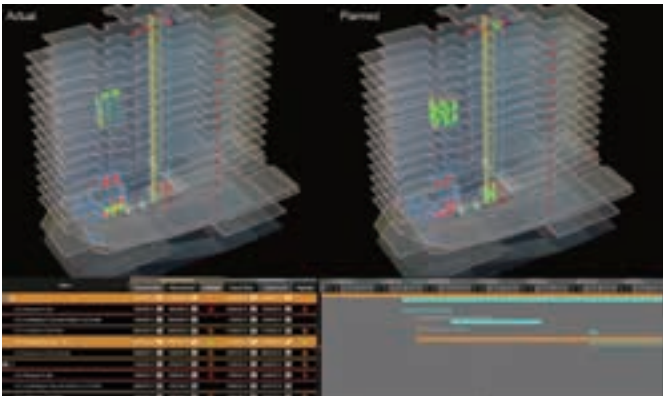
**Year of Establishment** 1946  
**Total No. of Staff** 1462

### Company Profile

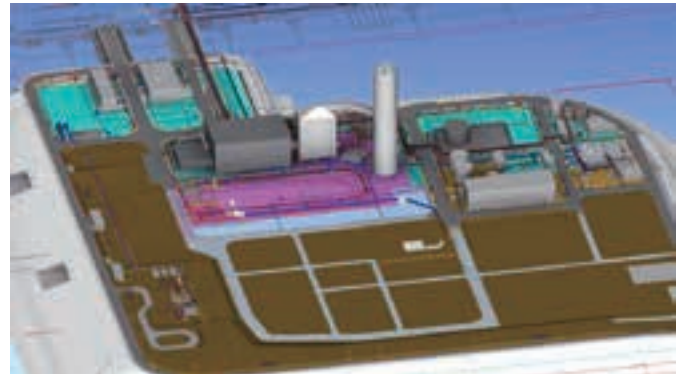
For over 70 years, our Company has been at the heart of some of the most challenging and impactful construction projects that have shaped the iconic skylines of Hong Kong and many other cities. Valuing innovation, we have been at the forefront of BIM application in Hong Kong, and strive to implement and develop technologies to enhance productivity, cost-effectiveness, and safety in construction.

In as early as 2013, our Company has established a BIM Department, devoting considerable resources to its research and development. We have a significant track record in the application of BIM to the tendering and construction phases of a wide range of projects, and received several awards in the industry related to BIM application, demonstrating our excellent achievement in its usage.

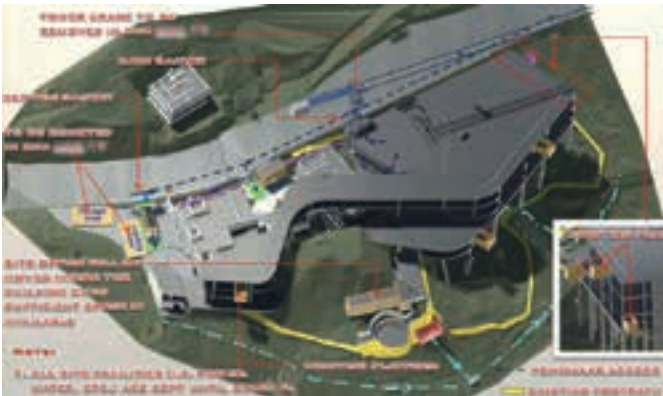
### Our Excellence in BIM Implementation



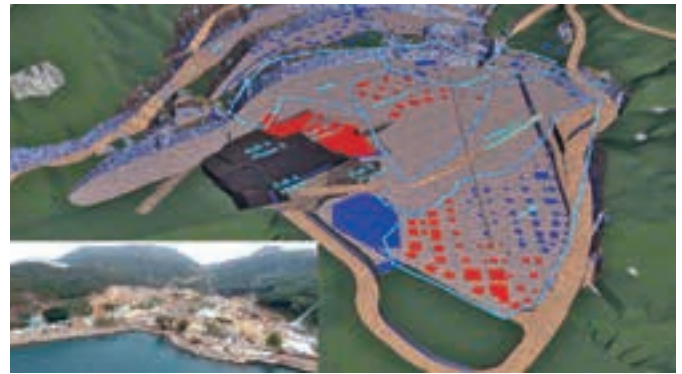
**Name of BIM Project** An A & A Project – Medical, Hong Kong  
**Name of Client** –



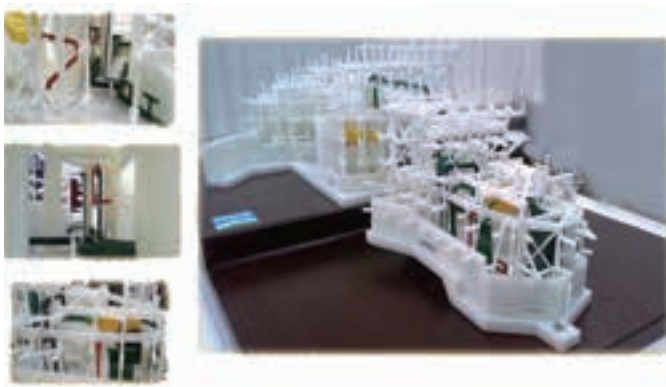
**Name of BIM Project** Lamma Power Station Extension Civil and Building Works for Unit L10, Hong Kong  
**Name of Client** The Hongkong Electric Co., Ltd.



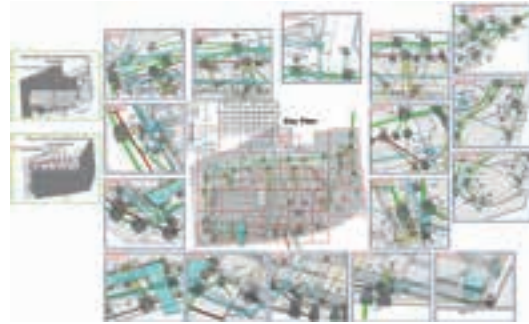
**Name of BIM Project** University of Chicago Center in Hong Kong  
**Name of Client** University of Chicago



**Name of BIM Project** Ocean Park Tai Shue Wan Development, Site Formation and Foundation Works, Hong Kong  
**Name of Client** Ocean Park Corporation



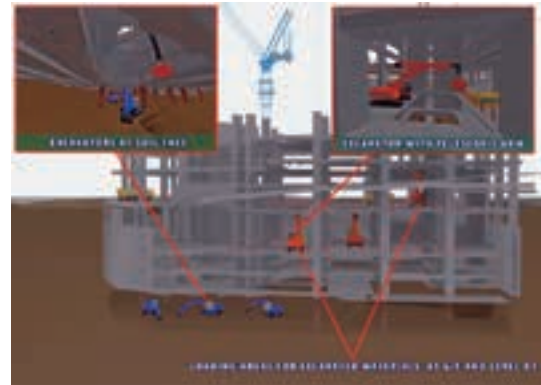
**Name of BIM Project** Hotel Development on Lantau Island, Hong Kong  
**Name of Client** -



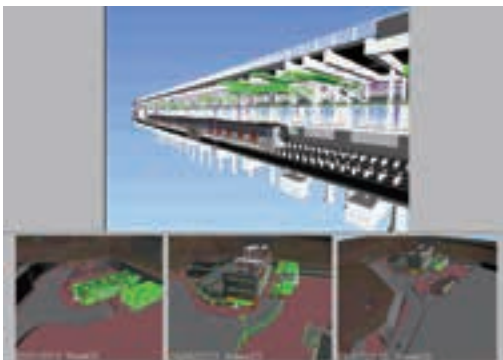
**Name of BIM Project** Home Ownership Scheme Developments at Mei Mun Lane Sha Tin Area 4C (Mei Ying Court) , Puk Tin Street Sha Tin Area 4D (Mei Pak Court), and Hin Tin Street Sha Tin Area 31, Hong Kong  
**Name of Client** Hong Kong Housing Authority



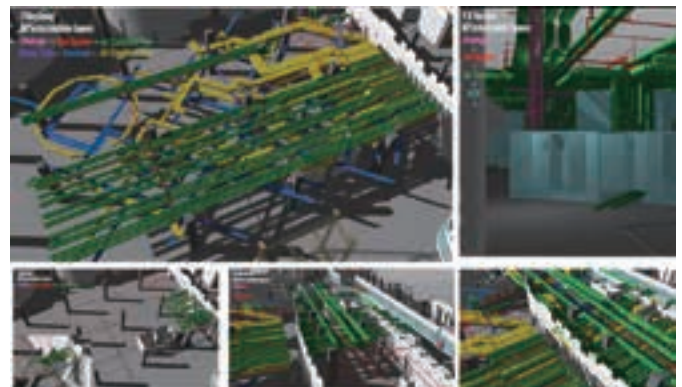
**Name of BIM Project** Hotel Development at Moreton Terrace, Hong Kong  
**Name of Client** Fortress Jet International Limited, Pine Cheer Limited and Sino Able Investments Limited (ITC Properties / CSI)



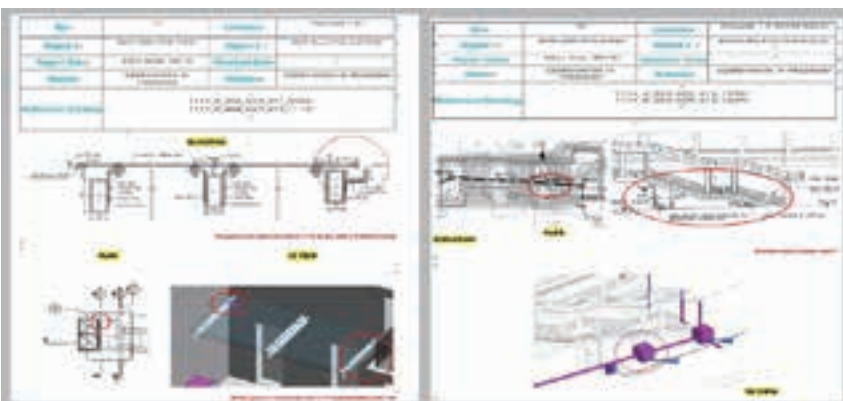
**Name of BIM Project** THE 13, Macau  
**Name of Client** Louis XIII Management Limited



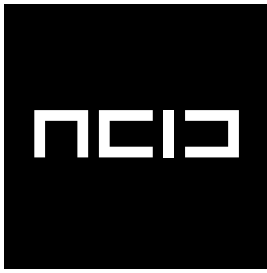
**Name of BIM Project** Shatin to Central Link (SCL) Contract 1117 - Pat Heung Depot Modification Works, Hong Kong  
**Name of Client** MTR Corporation Limited



**Name of BIM Project** Studio City, Macau  
**Name of Client** Studio City Developments Limited



**Name of BIM Project** Shatin to Central Link (SCL) Contract 1114 - Tsz Wan Shan Pedestrian Links, Hong Kong  
**Name of Client** MTR Corporation Limited



## Advanced Construction Information Development Ltd

A2, 35/F, TML Tower, 3 Hoi Shing Road, Tsuen Wan, New Territories.

**Tel** (852) 3468 5250 **Email** hongkong@a-c-i-d.com

**Fax** (852) 3585 5599 **Website** hkacid.com

### Company Data

**Year of Establishment** 2014

**Total No. of Staff**

**(Hong Kong)** 20

**(China)** 90

### Company Profile

A.C.I.D. has been dedicated to providing clients with highest quality Architectural and Project Management services by applying advanced technologies like BIM, computational application and parametric modelling. We provide clients with the most efficient and feasible solutions on complex and difficult design, as well as construction and management issues. Specializing in BIM education and training, we also strive to offer professional industry-wide BIM training courses.

EDUCATION	CONSULTING	PROJECT MANAGEMENT
<p>A.C.I.D. offers professional training courses at all professional levels. Both at BIM Studio or on site.</p>	<p>A.C.I.D. offers consulting services to all BIM related business from project inception, design, construction and operational phases to different organizations.</p>	<p>A.C.I.D.'s project team assists the client and team to carry out the BIM process in the project.</p>



A.C.I.D. Managing Director David Fung (Second from Right) awarded BIMer of the Year, BIM Excellence Awards 2014, Construction Industry Council, Hong Kong.



### Selected Projects

Heritage & Conservation Work  
Educational  
Commercial  
Residential  
Institutional  
Hospital  
Leisure Park & Landscaping  
Master Planning

### Specialties

Photogrammetry  
Virtual Reality & Augmented Reality  
View Engineering  
BIM Modelling & Management  
Facility & Asset Management  
BIM Standards

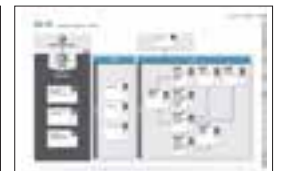
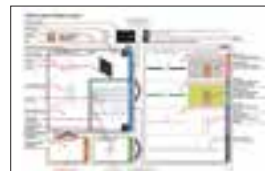
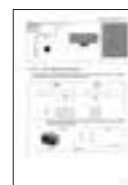
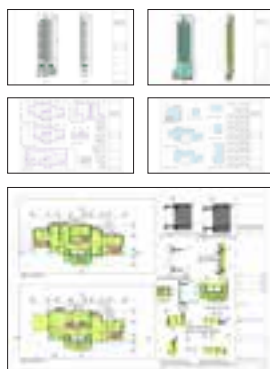
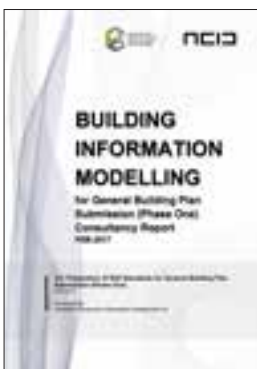
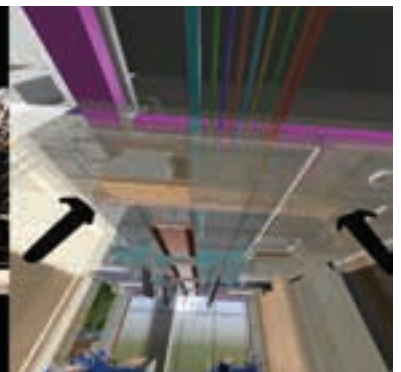
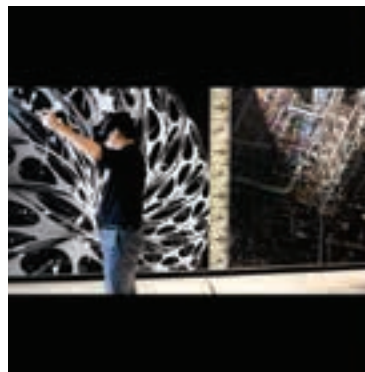
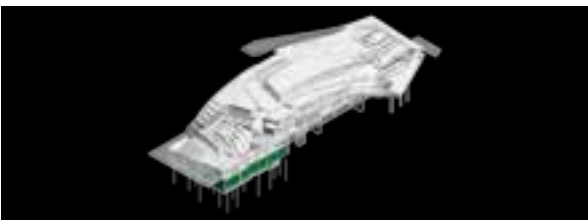
▲ Hong Kong  
Advanced Construction Information Development Ltd.

◀ WuHan  
▼ ShanHai  
华科优建工程信息发展有限公司

ShenZhen

ShanHai







**AECOM Asia Company Limited**  
**艾奕康有限公司**

8/F, Grand Central Plaza, Tower 2, 138 Shatin Rural Committee Road Shatin, N.T.

**Tel** (852) 3922 9000    **Email** david.lui@aecom.com

**Fax** (852) 3922 9797    **Website** www.aecom.com

**Company Data**

**Year of Establishment** 1986

**Total No. of Staff** Above 300

**Company Profile**

AECOM is built to deliver a better world. We design, build, finance and operate infrastructure assets for governments, businesses and organizations in more than 150 countries. As a fully integrated firm, we connect knowledge and experience across our global network of experts to help clients solve their most complex challenges. From high-performance buildings and infrastructure, to resilient communities and environments, to stable and secure nations, our work is transformative, differentiated and vital. A Fortune 500 firm, AECOM had revenue of approximately \$18.2 billion during fiscal year 2017. See how we deliver what others can only imagine at aecom.com and @AECOM.



# Infrastructure that transforms the future

As a premier and fully integrated global infrastructure firm, we design, build, finance, operate and manage projects and programs that unlock opportunities, protect our environment and improve people's lives.

[aecom.com](http://aecom.com)



*Kai Tak Cruise Terminal, Hong Kong*



**AECOM**

# Imagine it. Delivered.

At AECOM, we deploy the newest technologies to design road, rail, energy and water systems, to enhance environments and to construct new buildings, communities and other infrastructure. We deliver the most innovative solutions that transform communities and improve lives.

[aecom.com](http://aecom.com)

Connecting Road to Liantang /  
Heung Yuen Wai Boundary Control Point over Fanling Highway  
*Photo : Courtesy of Civil Engineering and Development Department*



## Architectural Project Unit Limited 雅博建築設計 ( 深圳 ) 有限公司

Suite 1218, 12/F, Chevalier Commercial Centre, 8 Wang Hoi Road, Kowloon Bay, Hong Kong

**Tel** (852) 2129 0190

**Email** info@a-p-u.hk

**Fax** (852) 3520 9946

**Website** www.a-p-u.hk

### Company Data

**Year of Establishment** 2012

**Total No. of Staff** 10-15

### Company Profile

Architectural Project Unit Limited (APU), is an architectural firm that specializes in master planning, architecture, building consultancy, interior design, and product design, serving clients from China, Hong Kong, Macau, Singapore, and all over the world. The company is united by the desire to deliver quality design and management services as well as to set up a studio-style office that is dedicated to creating avant-garde and innovative designs. At APU, the international design team carries out every single project with an initial in-depth research of the client's need. Being sensitive to project sites and cultural contexts, it adopts design approaches that are inspiring, creative, practical and tailored to the needs of the communities. To well fit in the architecture market trend, APU uses technologies driven by Building information Modeling (BIM) in building design and project management so that comprehensive solutions could be instantly generated and accurately delivered to our clients and other consultants at an early stage.





# ARCHPOLIS

Architecture | BIM management

## Archpolis Limited 聯合都市建築設計有限公司

Rm 1203B, Henley Industrial Centre, 9 Bute Street, MongKok, Hong Kong

**Tel** (852) N/A

**Email** info@archpolis.com.hk

**Fax** (852) 3007 2049

**Website** www.archpolis.com.hk

### Company Data

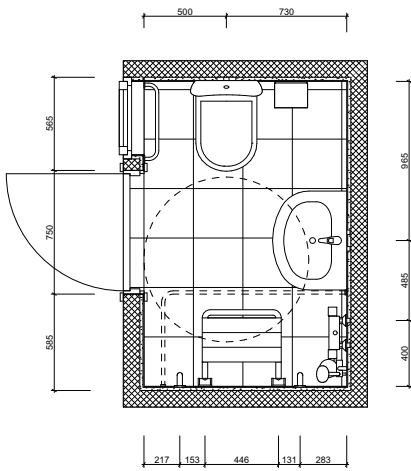
**Year of Establishment** 2017

**Total No. of Staff** 50 or below

### Company Profile

ARCHPOLIS Ltd. is an architectural and BIM consultancy firm that explores new possibilities on local architectural practice brought by BIM and new design softwares. Our team, which comprises of authorised person and registered architects, uses BIM as design tool to streamline and add value to traditional architectural design service. We also research tailored BIM solutions for contractors according to their site workflow.

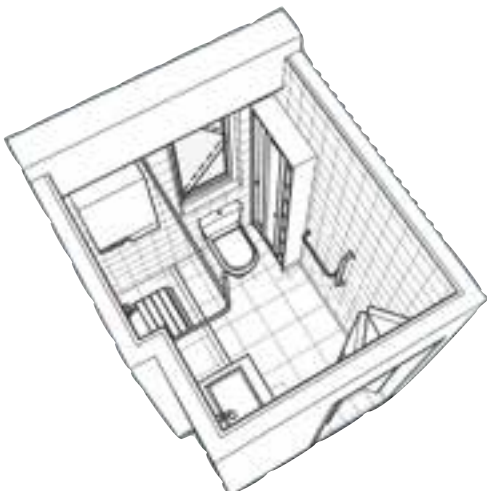
Our office follows BIM guiding principles in UK BS1192:2007+A2:2016 and UK PAS1192-2:2013. Implementation details has been developed based on AEC(UK) BIM Technology Protocol. Modelling methodology and drawing production from BIM are compatible with relevant practice notes issued by Buildings Department, Hong Kong.



▲ Interior Design ▼

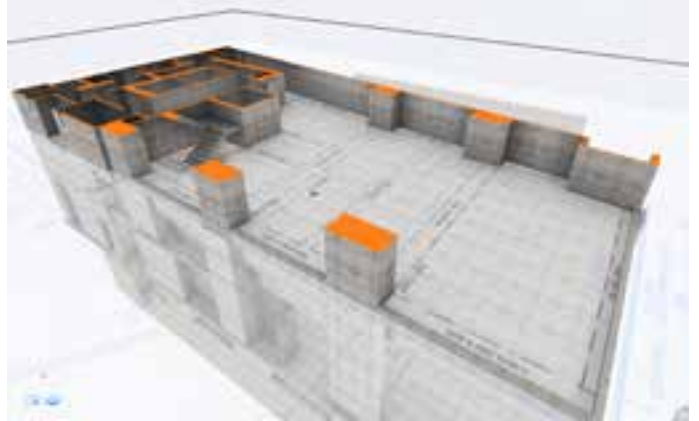
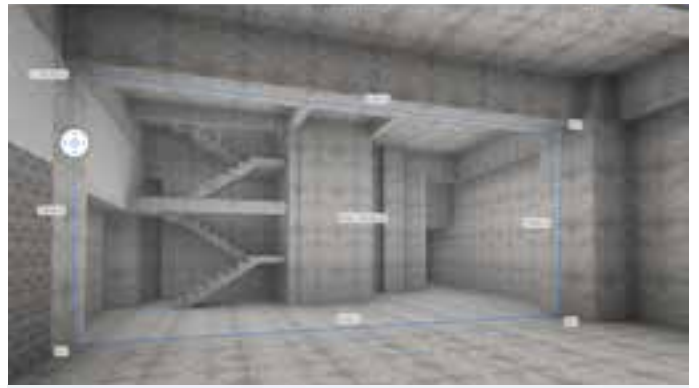


▲ Development Feasibility Study ▼

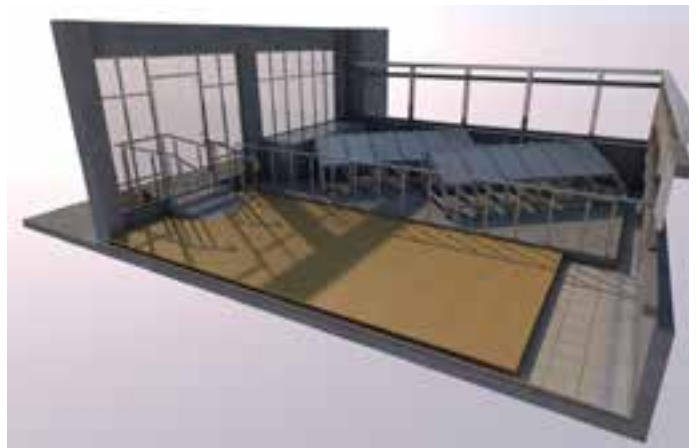




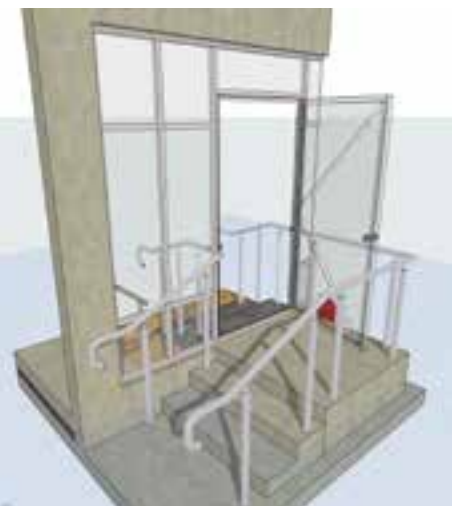
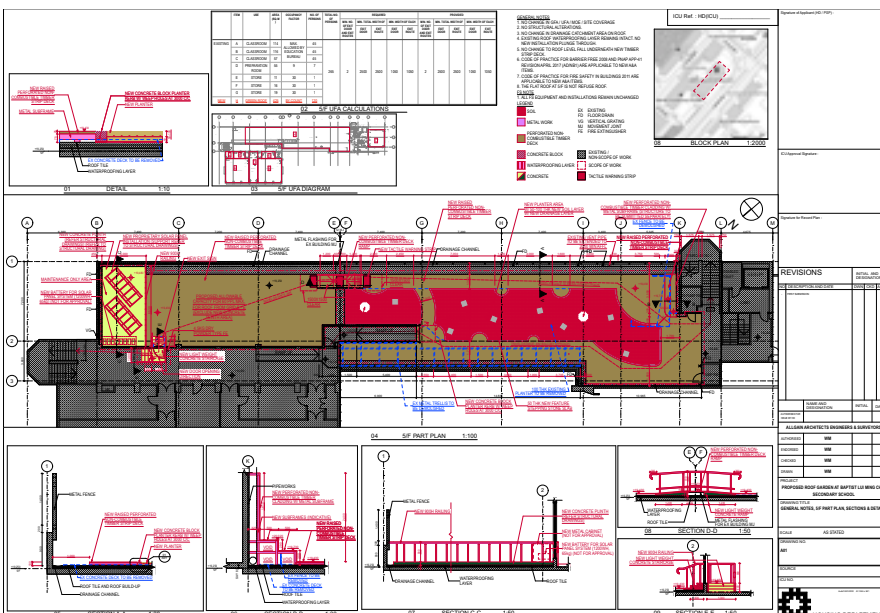
▲ Architectural Design



▲ Assisting Contractor Site Coordination



◀ Statutory Submission ▶▶



# ARUP

## Arup 奧雅納工程顧問

Level 5 Festival Walk, 80 Tat Chee Avenue, Kowloon Tong, Hong Kong

**Tel** (852) 2528 3031    **Email** hongkong@arup.com

**Fax** (852) 2865 6493    **Website** www.arup.com

### Company Data

**Year of Establishment** 1946

**Total No. of Staff** 14000

### Company Profile

Arup is the creative force at the heart of many of the world's most prominent projects in the built environment and across industry. Working in over 140 countries Arup has more than 14,000 planners, designers, engineers and consultants delivering innovative projects across the world with creativity and passion.

Founded in 1946 with an enduring set of values, our unique trust ownership fosters a distinctive culture and an intellectual independence that encourages collaborative working. This is reflected in everything we do, allowing us to develop meaningful ideas, help shape agendas and deliver results that frequently surpass the expectations of our clients.

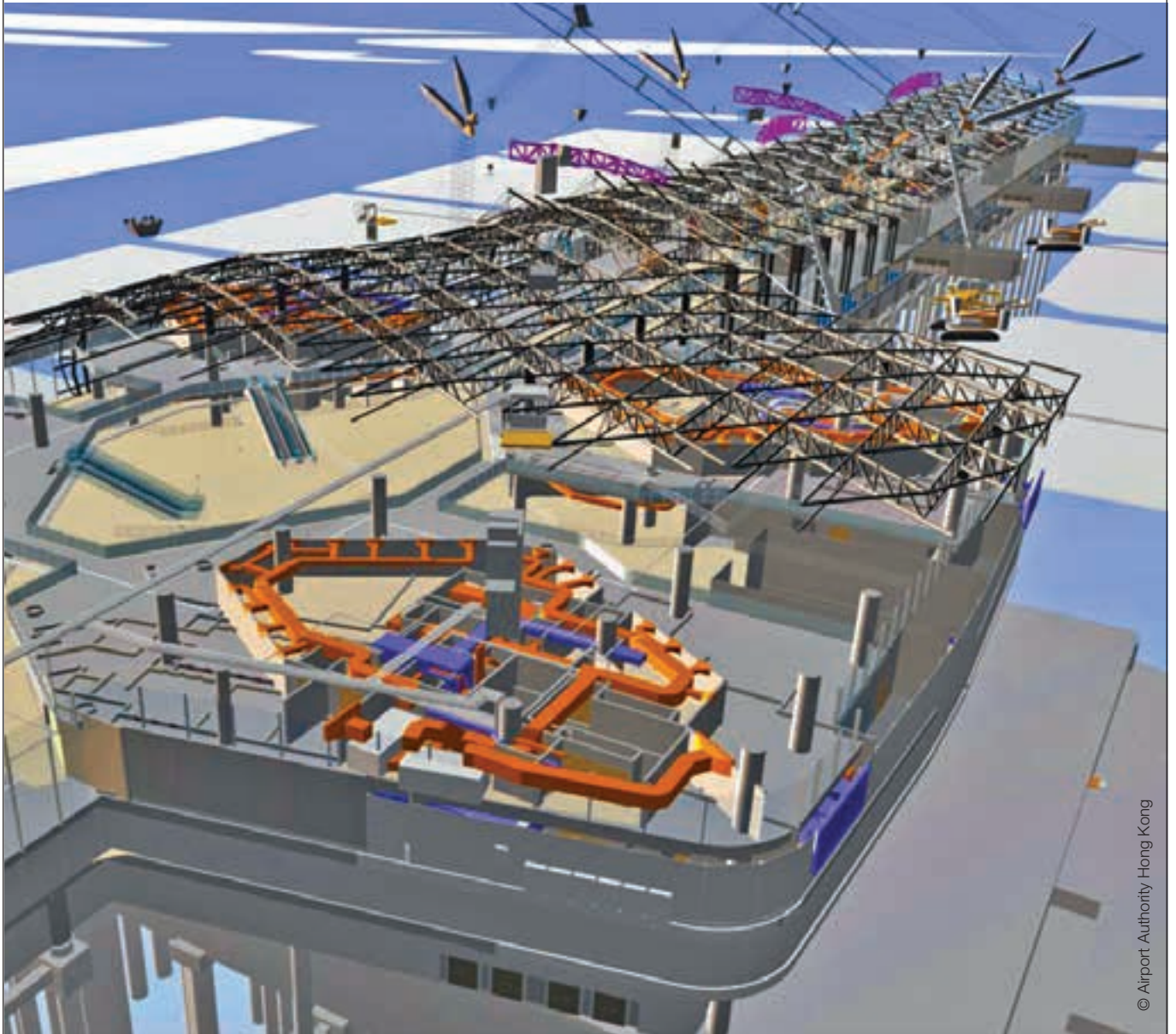
We are helping lead the way towards total adoption of standardised Building Information Modelling (BIM). We are constantly innovating in the way we use this combination of technologies to speed up processes, enable widespread collaboration, be more creative in what we can imagine together, and enable an effective operational management.

## Driving a new era of BIM

With an enviable track record, Arup provides BIM services as a key part of our multidisciplinary offerings from design development through to construction, delivering a more streamlined and cost-effective approach for the low carbon era of the built environment.

Image

Hong Kong International Airport Midfield Concourse



© Airport Authority Hong Kong

We shape a better world | [www.arup.com](http://www.arup.com)

ARUP



**ATKINS**  
Member of the SNC-Lavalin Group

## Atkins China Limited 阿特金斯顧問有限公司

13F, Wharf T&T Centre, Harbour City, Tsim Sha Tsui, Kowloon, Hong Kong

**Tel** (852) 2972 1000    **Email** info.hk@atkinsglobal.com

**Fax** (852) 2890 6343    **Website** www.atkinsglobal.com

### Company Data

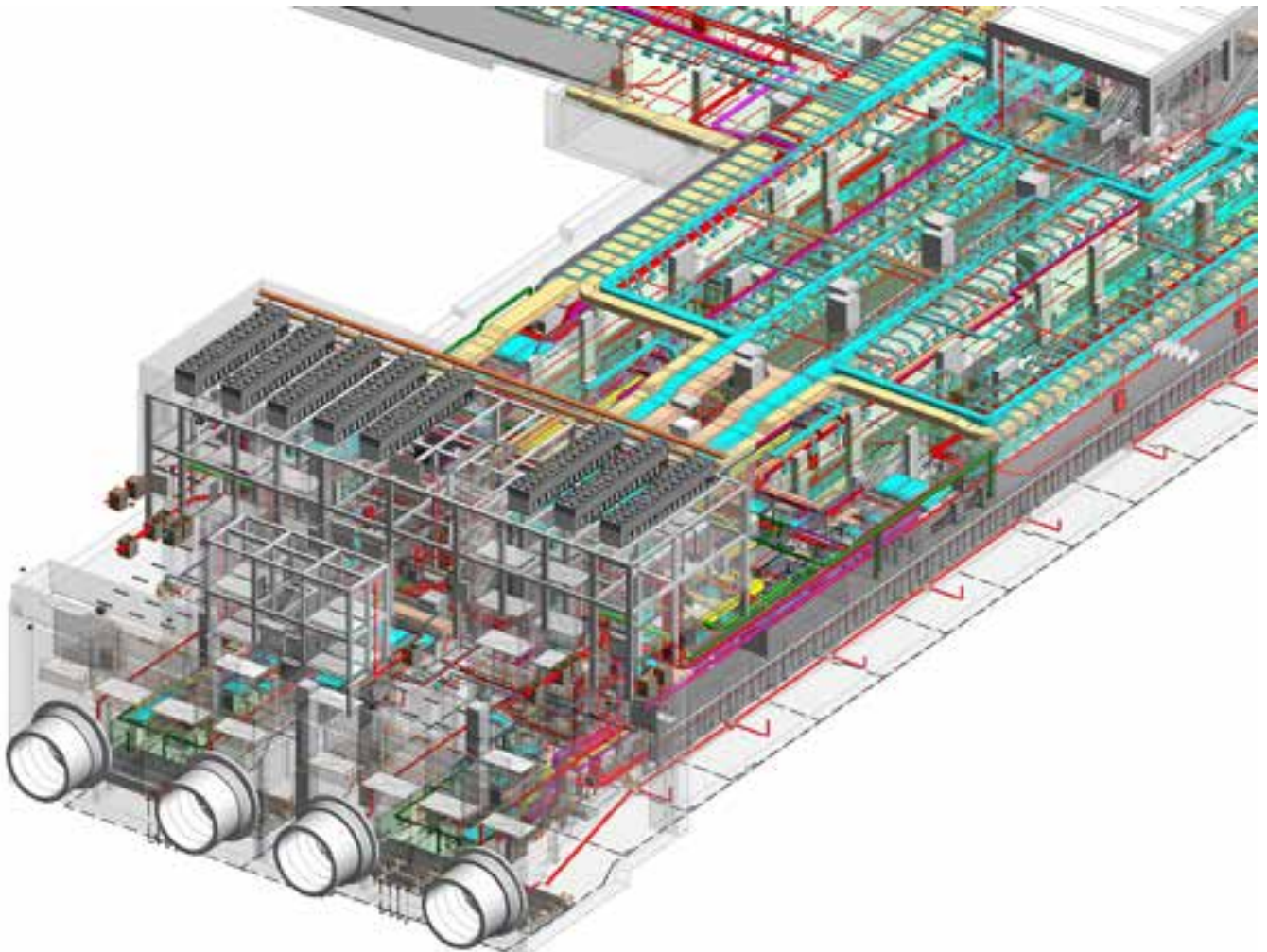
**Year of Establishment** 1973

**Total No. of Staff** Above 600

### Company Profile

SNC-Lavalin's Atkins business is one of the world's most respected design, engineering and project management consultancies. Together, SNC-Lavalin, a global fully integrated professional services and project management company and Atkins help our clients plan, design and enable major capital projects, and provide expert consultancy that covers the full lifecycle of projects. Our specialized services can be contracted flexibly for niche mandates to megaprojects.

In Asia Pacific, we have some 3,000 employees located in 6 countries. We offer a wide range of expertise throughout the entire development cycle to help client to maximise the value of their investment.









## Aurecon Hong Kong Limited 澳昱冠 ( 香港 ) 有限公司

Suite 2205-6, 22/F, Island Place Tower, 510 King's Road, North Point, Hong Kong

**Tel** (852) 3664 6888    **Email** hongkong@aurecongroup.com

**Fax** (852) 3664 6999    **Website** <https://www.aurecongroup.com/>

### Company Data

**Year of Establishment** 2009

**Total No. of Staff** 150

### Company Profile

Aurecon is an engineering and infrastructure advisory company. We serve our clients across a range of markets, in locations worldwide. We work alongside them like no other firm to co-create clever, innovative solutions to some of the world's most complex challenges, adding value across the project lifecycle through deep technical and advisory expertise.

Privately owned by employees, Aurecon formed in 2009 when African, Connell Wagner and Ninham Shand announced the formation of a new global group.



Think engineering. Think again.  
**Aurecon: Engineering, re-imagined.**

**aurecon**

*Bringing ideas  
to life*

Aurecon is an engineering and infrastructure advisory company, but not as you know it. We've reimagined engineering.

Drawing on our deep pool of knowledge, we bring vital engineering experience, technical capability and design expertise to the table. Then we listen deeply and intently. We see the opportunities, possibilities and potential that others don't. Through a range of unique creative processes and skills, we collaborate with our clients to re-imagine, shape and design a better future.

Think engineering. Think again.  
**Aurecon: Engineering, re-imagined.**

**aurecon**

*Bringing ideas  
to life*

[www.aurecongroup.com](http://www.aurecongroup.com)



## BIM-CAP (HK) Ltd.

2A Garley Building, 53 Graham Street, Central, Hong Kong

**Tel** (852) 2237 1588 **Email** [bimcap@bimcap.com](mailto:bimcap@bimcap.com)

**Fax** (852) 3010 1276 **Website** [www.bimcap.com](http://www.bimcap.com)

### Company Data

**Year of Establishment** 2009

**Total No. of Staff** 105

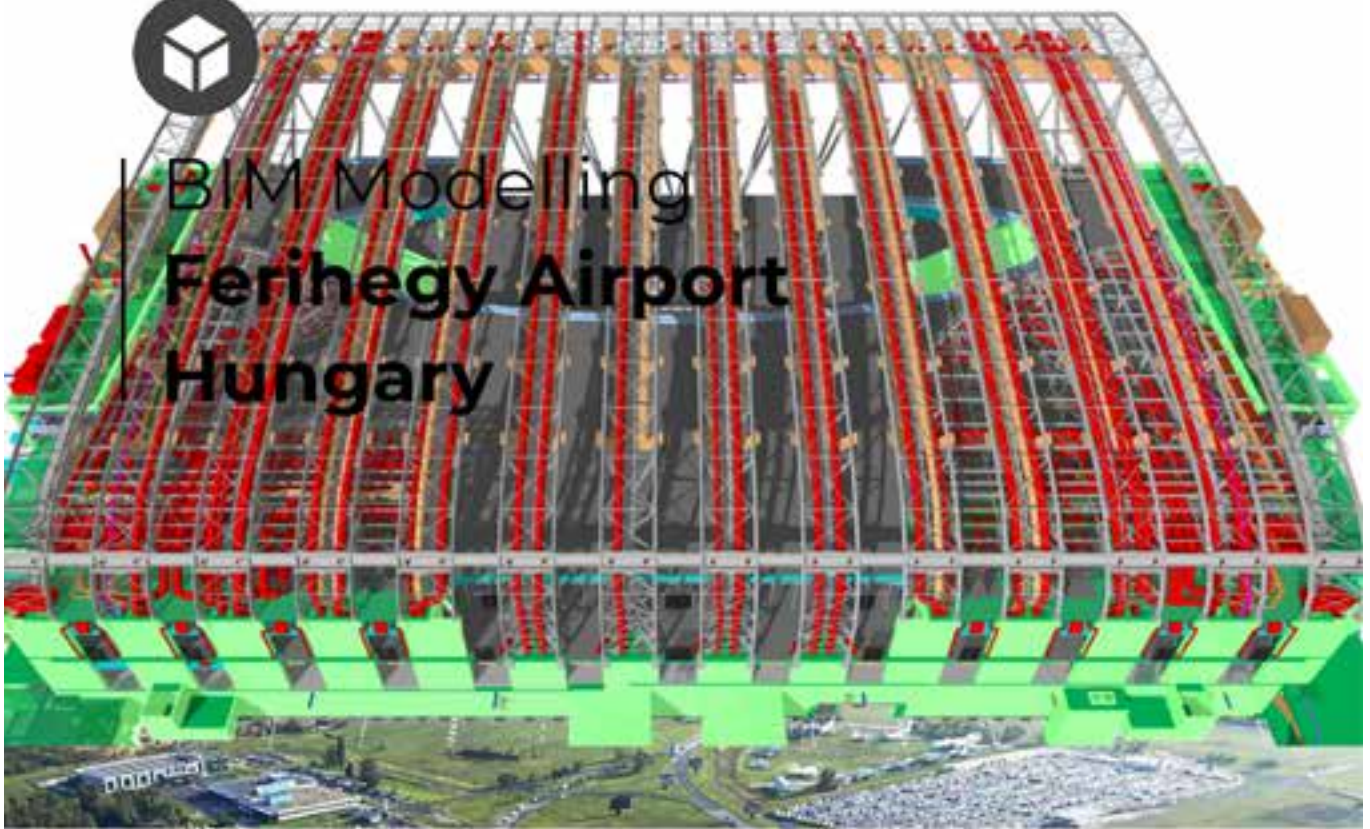
### Company Profile

BIMCAP Holdings was founded in 2010 by Marc Schlaghecke, a Dutch entrepreneur, who has been working with BIM on design and engineering projects in Germany since 2010. In 2017, BIMCAP Holdings took over BIM Studio “Fat Sumo” in Hong Kong and Danny Yang, its then owner, joined the company as Partner and Managing Director of Hong Kong branch. Currently employing over 90+ licensed architects and engineers in Budapest and 15 people in Hong Kong to do BIM modelling for architects, construction companies, and engineering companies. BIMCAP closely collaborate with their international partner network “the Ryder Alliance”. BIMCAP is the best outsourcing company for 3D-modelling work in all design disciplines and have been delivering the best BIM quality available for many years.





# BIM Modelling Ferihegy Airport Hungary



## OVERVIEW

In this complex development of Sky Court, the new central building of 2nd Terminal of Budapest Airport we were asked to co-ordinate all the BIM Services. Our client wanted to minimize errors and time spend co-ordinating all the various disciplines in terms of both software and BIM deliverables. Our task and scope of works involved making sure that all BIM protocols were followed and used efficiently.

Project: Ferihegy Airport

Client: Architect

Category: BIM 3D Modelling

Date of Completion: 2011

In this scheme more than 20 designer teams participated in the project as sub-contractors. These teams diverse not only regarding their locations but also regarding the software platforms they used for the specific design. Due to the number of stakeholders and the variety of their software forced the main contractor to engage BIMCAP and their services to break with the traditions and put more emphasis on the coordination, and introduce it as a new discipline.



AMSTERDAM / BUDAPEST / HONG KONG



## Build.IT Limited 建築資訊顧問有限公司

Unit 711, Building 12W, Hong Kong Science Park Phase 3, Pak Shek Kok, Shatin, N.T., Hong Kong

**Tel** (852) 2752 7508

**Email** info@buildit.com.hk

**Fax** (852) 2751 9868

**Website** <http://www.buildit.com.hk>

### Company Data

**Year of Establishment** 2013

**Total No. of Staff** 50 or below

### Company Profile

Established in 2003, Build.IT Limited is a professional BIM consulting firm that is concerned with 3D Building Information Modelling, 4D simulation, 5D with CostX and the production of the animation/walkthrough to help our clients benefit from the BIM process during the design and construction stage. We also create a common data environment (dRow) to do a data exchange between client and contractors. We have over 40 employees. Our strong BIM team of Building (Arch/Struct/Civil/MEP/QS/Asset Management) by using Navisworks or COBie throughout all stages of production enables us to guarantee total customer satisfaction.

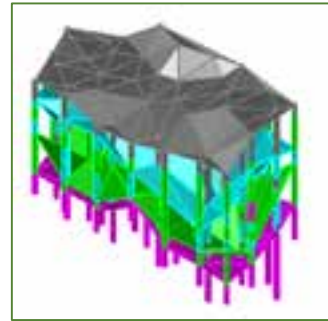
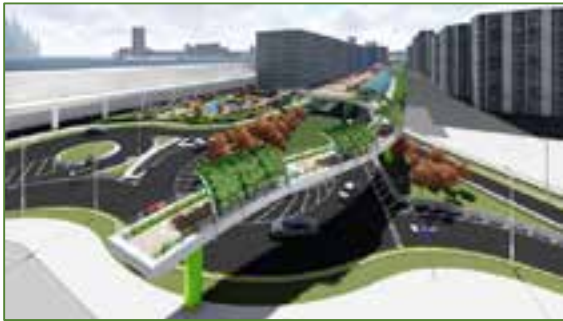


## Build.IT Cloud-based BIM Capability

- Design Collaboration
- Clash Analysis
- CSD&CBWD Preparation
- Construction Simulation
- As-built Modelling
- 3D Laser Scanning / Photogrammetry
- GIS Integration
- Advanced Graphical Programming
- Facility Management
- Virtual Reality / Augmented Reality
- System Development



### BIM (Civil)



### BIM (Building)



### Mobile BIM (iPad/iPhone)



### BIM-NEC-CDE





## GT Asia Limited (Gehry Technologies), Trimble Inc.

19/F., Wui Tat Centre, No. 55 Connaught Road West, Sheung Wan, Hong Kong  
**Tel** (852) 2625 9222    **Email** gting@gehrytech.com  
**Fax** (852) 2625 9332    **Website** www.gehrytech.com

### Company Data

**Year of Establishment** 2005, 1978  
**Total No. of Staff** 20, 8000

### Company Profile

Trimble is a leading provider of advanced location-based solutions that maximize productivity and enhance profitability. The Company integrates its positioning expertise in GPS, laser, optical and inertial technologies with application software, wireless communications, and services to provide complete commercial solutions. Trimble serves a variety of industries including agriculture, engineering and construction, transportation and wireless communications infrastructure. The Company's portfolio of over 700 patents is the basis for the broadest positioning solutions portfolio in the industry. Trimble's Building division covers a wide range of software and platforms (Tekla, SketchUp, Vico Office, Trimble Connect, e-Builder, Prolog and Manhattan).

Gehry Technologies ("GT") is a wholly owned subsidiary of Trimble inc. GT is an AECO consulting services group providing leading edge solutions to the industry's most challenging projects. Our clients include some of the most recognized international architects, engineers, contractors, and owners working across the globe. GT is specialized in providing professional consulting services that bridge digital design to real-world construction. Having worked on a variety project from mixed-use developments, cultural, medical, sports, entertainment, resorts, and hotels, GT has consulted and implemented BIM in all stages of building life-cycle from design, tender, construction and facility management.

#### Residential



#### Cultural





Theme Park



Infrastructure



Educational



Health Care



Mixed Use and Commercial

Hospitality





## isBIM Limited 香港互聯立方有限公司

19/F, Nathan Commercial Building, 430 Nathan Road, Kowloon, Hong Kong

**Tel** (852) 2382 8380    **Email** solution@isbim.com.hk

**Fax** (852) 3116 2467    **Website** www.isbim.com.hk

### Company Data

**Year of Establishment** 2010

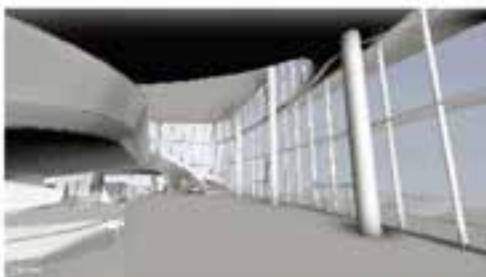
**Total No. of Staff** 150

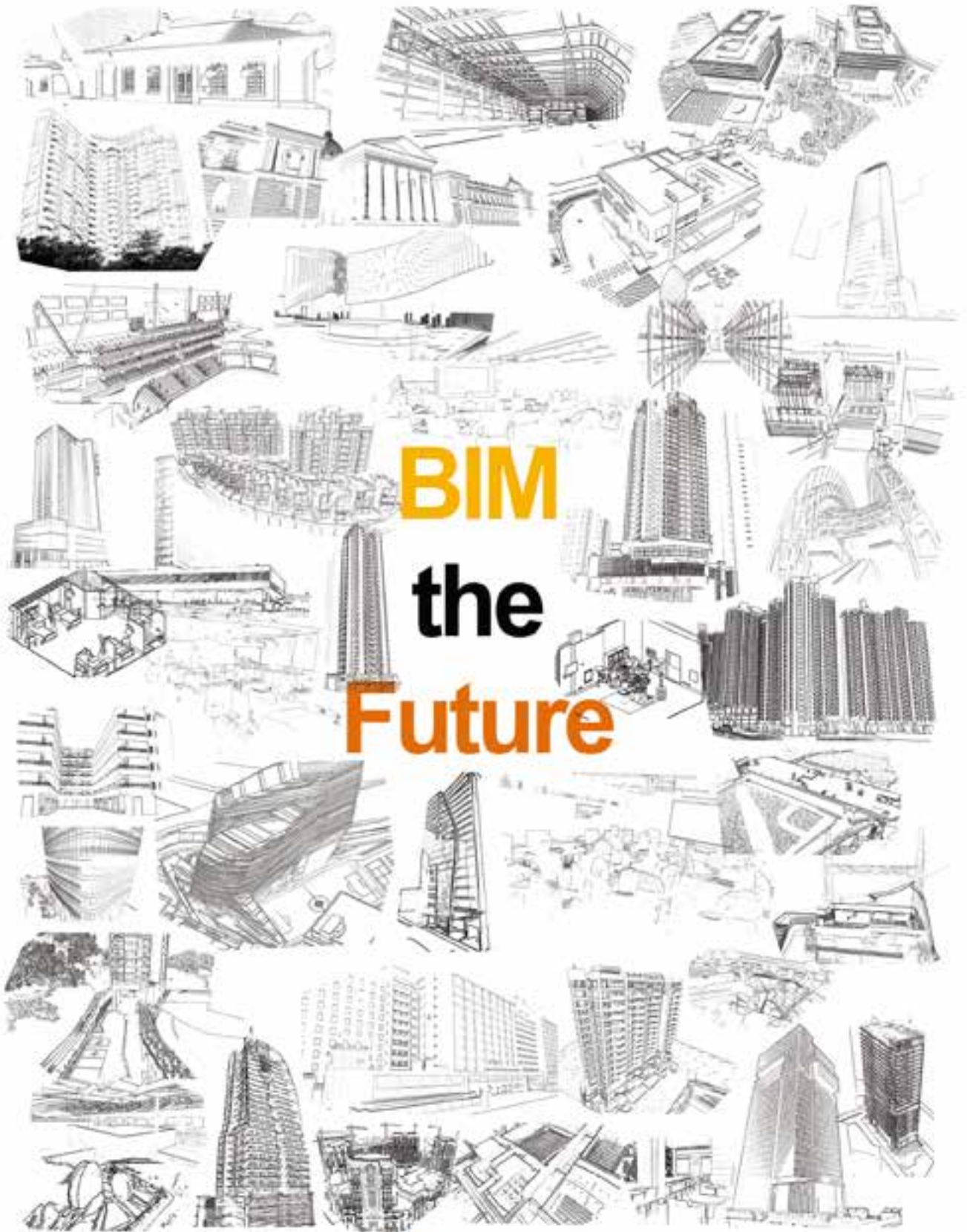
### Company Profile

isBIM Limited (isBIM) is a leading BIM data consultancy in the Asia Pacific. We have been the largest Building Information Modelling (BIM) company within the Great China region since founded in 2010.

isBIM provides comprehensive range of BIM data services throughout the entire building lifecycle for clients including stakeholders, designers, contractors, suppliers, etc. We bring our clients a professional aspect and experience to enrich every firm and project with services including AI platforms, BIM project management, design optimization, corporate trainings, etc.

isBIM offers BIM data analysis services in all stages to add values, minimise project risks and facilitate our client's success with our expertise and experience. Throughout the years, we have involved in more than 300 projects and has won over 40 awards on BIM application, innovation and development.





# BIM the Future



[www.isbim.com.hk](http://www.isbim.com.hk)

+852 2382 8380

[solution@isbim.com.hk](mailto:solution@isbim.com.hk)



## Leigh & Orange Ltd 利安顧問有限公司

801, Dorset House, Taikoo Place, 979 King's Road, Hong Kong  
**Tel** (852) 2899 9000    **Email** info@leighorange.com  
**Fax** (852) 2806 0343    **Website** www.leighorange.com

### Company Data

**Year of Establishment** 1874  
**Total No. of Staff** 100 – 300

### Company Profile

Founded in Hong Kong in 1874, Leigh & Orange is a well-established international architectural design practice offering high quality design and project management services to major local and overseas clients on a wide range of building types in both public and private sectors, including education, equine & sports, healthcare, heritage, community & culture, hospitality, integrated resort & entertainment, interiors, masterplanning & TOD, office, mixed-use & commercial, recreation & theme park, residential, science park, data centre & industrial Building and transportation and infrastructure. The practice adopts an innovative design approach for all projects, incorporating the latest intelligent building ideas in addition to the green concepts of sustainability, energy conservation and minimal environmental “footprint”. Leigh & Orange is certified under ISO 9001, ISO 14001 and OHSAS 18001. The integrated quality management system covers quality, environment and safety throughout China, South East Asia and the Middle East.

**BIM IMPLEMENTATION** | L&O fully embraces the philosophy of collaborative effort and our use of BIM streamlines and facilitates our design and coordination processes.

L&O has employed BIM and three-dimensional design coordination since 2005 for a number of complex projects on which close coordination between all members of the design team were required. These projects have involved detailed coordination of design details in three dimensions, and rigorous design reviews were conducted at each stage of the project.

Implementation of BIM on these projects has greatly assisted the client to visualise the design in its completed state. It has also provided a useful tool to facilitate the construction team to complete the projects on time, which is largely as a result of there being less ambiguities and discrepancies on the drawings.

L&O’s experience with BIM implementation has enabled the site team to record as-built conditions which can be retrieved in the future as reference information for the facility management team. We also have the capacity to assist clients to maximize the benefits of using BIM throughout the entire building life-cycle.

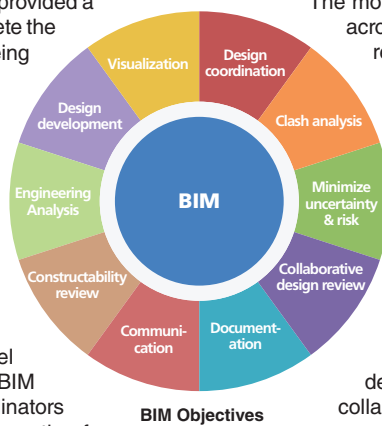
**THE L&O BIM TEAM** | The L&O BIM team is committed to delivering BIM services with a high level of professionalism and expertise. The in-house BIM team consists of architects, BIM managers, coordinators and modelers with all necessary experience and expertise for executing and supporting BIM projects. This is supported by in-house BIM training, which is provided for design teams to fully utilise the BIM platform for design development and documentation in order to achieve full utilization of BIM in the design process.

The L&O BIM team has proven capability as BIM lead consultant on a number of highly complex BIM projects. L&O has led the BIM team, comprising BIM coordinators and modelers for each discipline, towards a fully coordinated and engineered BIM for the successful project delivery. In view of this experience the L&O BIM team takes great pride in the good coordination and the high standards of quality achieved in BIM.

**BIM PROCESS AND METHODOLOGY** | L&O has developed BIM standards and a BIM project execution plan to facilitate full integration of project teams. We lead and execute BIM implementation on projects throughout the entire process from preliminary design to construction documentation and beyond. At the start of the BIM process we will chair a kick-off protocol coordination meeting with the entire project consultancy team to agree on the model element ownership and input responsibility for each discipline, as well as the schedule of model exchange for design coordination.

The model is periodically reviewed by the project team across disciplines and any clashes are identified and resolved. This iterative process enables the client to holistically review and approve the design and ensure that the inputs from all stakeholders are incorporated.

**BIM SOFTWARE** | L&O implements the industry’s latest BIM hardware and software into the workflow to carry out tasks with complex parametric modelling of advanced geometry, energy analysis, 4D construction simulation, virtual reality design review and construction monitoring. L&O fully utilises these collaboration tools together with design authoring tools to fully reach the optimum collaboration effort from the project team.



Design Authoring Tools	Sustainability Tools
Autodesk Revit and Dynamo AutoCAD Architecture Rhino 3D & Grasshopper Trimble Sketchup	Autodesk Ecotect Autodesk Vasari Sefaira
Design Review Tools	Collaboration Tools
Autodesk Navisworks Fuzor Virtual Reality (HTC Vive/Oculus) Solibri Model Checker	Autodesk Revit Server Bluebeam Newforma BIM360 BCF Manager



**KAI TAK SPORTS PARK, HK / 2023**

BIM was adopted from concept design to tender for this design, build and operate project. L&O was appointed as technical services consultant.

Software | Autodesk Revit & Autodesk Navisworks  
Client | Home Affairs Department



**VTC INTERNATIONAL CULINARY INSTITUTE, HK / 2018**

BIM was adopted from the concept design stage for iterative creative design reviews and coordination of complicated building services for kitchen areas. Various design options for façade and statutory requirement of compartmentation was studied through BIM model.

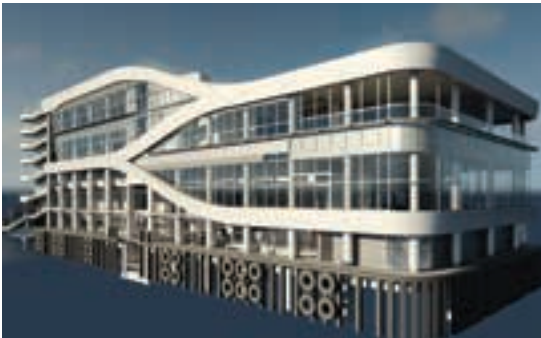
Software | Autodesk Revit  
Client | Vocational Training Council



**OFFICE BUILDING WITH EXHIBITION SPACE, HK / 2017**

BIM was adopted from concept design to tender for this design and build project.

Software | Autodesk Revit & Autodesk Navisworks  
Client | Water Supplies Department

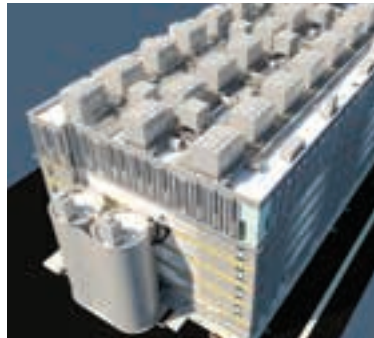


**CENTRAL PIERS NOS. 4, 5 & 6, CENTRAL, HK / 2018**

Both L&O and the Structural Consultants have opted to employ BIM model to assist with resolving the complex coordination issues and meeting the clients' design expectations on this important high profile public project.

The briefing requirements for the pier projects have called for the addition of commercial floors to the existing pier structures, as well development of the roofscapes for public use and for the enjoyment the fine harbor views. The utilization of BIM on the project has greatly assisted in the coordination of the design and the realization of the design objectives.

Software | Autodesk Revit & Autodesk Navisworks  
Client | Civil Engineering & Development Department (CEDD)



**DATA CENTRE, TSEUNG KWAN O, HK / 2015**

BIM was utilized by all disciplines on this heavily serviced project, on which a high degree of coordination was required between the building structure and the building services systems.

On completion of the design the BIM model has been provided to the client as well as to the contractor to assist with his coordination during the construction stage of the project.

Software | Autodesk Revit  
Autodesk Navisworks  
Client | NTT



**DATA CENTRE, TSEUNG KWAN O, HK / 2010**

BIM was utilized in this heavily serviced project in 2010, and a full model of the building including structure and building services was developed to facilitate the coordination of the design between disciplines.

The BIM Model was developed on Autodesk Revit platform and the completed model was used to assist with tender documentation.

Software | Autodesk Revit  
Autodesk Navisworks  
Client | Confidential US Client



## MES Services Limited

Unit D, 16/F, Nathan Commercial Building, 430 Nathan Road, Yaumatei, Kowloon  
**Tel** (852) 3188 5230    **Email** info@mesgroup.asia  
**Fax** (852) N/A    **Website** www.mesgroup.asia

### Company Data

**Year of Establishment** 2011  
**Total No. of Staff** 50

### Company Profile

MES is an Asia-based construction information technology consultancy founded in February 2011. We provide Building Information Modeling (BIM) and Construction Modeling and Control (CMC) solutions to building and civil projects. We engage in the business of providing the services of BIM solutions and specialist in Quantitative Information Modelling (QIM) supported by a professional team over the whole project life cycle. We also provide training courses, software and technical platforms to meet the needs of talents, knowledge and BIM technology, and to facilitate industry elites reaching the international standard. We are the trusted partner and trainer to the Asia's leading governments, property developers, architects, contractors and construction education institutions. MES has 3 offices which are located in Hong Kong (headquarter), Guangzhou (China) and Kuala Lumpur (Malaysia).

**QIM QUANTITY TAKEOFF SOLUTIONS**

**Revolutionary solution to BIM quantity takeoff**

*Quantitative Information Modeling (QIM) is a new BIM-based Cost Management approach for all construction projects. With the aids of QIMSD, quantitative information are integrated with BIM models. QIMSD is an integration of BIM technology into conventional Quantity Surveying practices, bringing efficiency and productivity to quantity takeoff process, ensuring accuracy of estimates, facilitating information sharing and enhancing project cost control management.*

Website: www.mesgroup.asia  
 Email: info@mesgroup.asia  
 Tel: 3188 5230  
 Address: Unit D, 16/F, Nathan Commercial Building, No. 430 Nathan Road, Yaumatei, Kowloon, Hong Kong

**TAG & GO**

QIMSD plug-in allows quantity surveyors to add Construction Electronic Measurement System (CEMS) tags on all BIM model elements in Autodesk Revit and extract required quantities with just 1 click.

**QUICK GENERATION OF BILLS OF QUANTITIES**

QIMSD speeds up the generation of bills of quantities, material schedule and even material on-site schedule through the automation of direct BIM quantities extraction from BIM models in QIMSD platform.

**STANDARD METHOD OF MEASUREMENT(SMM) COMPLIABLE**

The method of measurement for BIM quantity takeoff through QIMSD is designed to comply with CEMS/SMM and other regional measurement practice, ensuring the extracted BIM quantity data is applicable to current industry practice.

# Project Management Platform throughout Project Life Cycle - ShareBIM



## Key features:

- Shared BIM-enabled platforms with proven project experience
- Shared for system development to the project full cycle (4D, 5D, 6D...)
- Shared to merge with existing enterprise system (PDMS, GMS, etc.)
- Shared to integrate with the supply chain/ERP via IoT (Prefab., MIC, etc.)
- Shared to interact with the NEC/GCC contract management system

... more



Website : [www.mesgroup.asia](http://www.mesgroup.asia)  
 Email : [info@mesgroup.asia](mailto:info@mesgroup.asia)  
 Tel : 3188 5230

Address : Unit D, 16/F, Nathan Commercial Building, No. 430 Nathan Road, Yaumatei, Kowloon, Hong Kong.



## MTECH Engineering Co.,Ltd.

1008, 10/F International Plaza, 20 Sheung Yuet Road, Kowloon Bay, Hong Kong  
**Tel** (852) 2755 1832    **Email** mtech@mtech.com.hk  
**Fax** (852) 2799 8272    **Website** www.mtech.com.hk

### Company Data

**Year of Establishment** 1995  
**Total No. of Staff** 50 or below

### Company Profile

Established in 1995, **MTECH ENGINEERING CO., LTD.** is an information technology orientated company to provide and apply BIM Consulting Services & Digital Construction solutions to building construction industry for safety, productivity and quality improvement. Our solutions cover the complete lifecycle of construction projects from design and engineering to fabrication, construction quality management, on site construction activities and facilities management.

**Our offer:**

**1. BIM Consulting Services**

- BIM consulting services from As-Design to As-Build BIM modeling
- Digital construction quality management system

**2. Digital Construction Solution**

- Bricscad for BIM modelling
- Aproplan/CHECKLIST/HELPSITE – mobile Apps for site inspection, quality and facility management
- Dalux – 3D BIM Viewer, defect management and facility management
- Bricsys 24/7 – Common Data Environment

# BIM FOR LEAN CONSTRUCTION

[www.mtech.com.hk](http://www.mtech.com.hk)

E X P L O R E . D I S C O V E R . L E A R N





## MTECH ENGINEERING CO.,LTD.

SERVE YOUR PROJECT BEST,  
WITH THE MOST PROFESSIONAL TECHNOLOGY

Gain competitive advantage through advanced 3D Building  
Information Modeling solutions for design and construction





## Ronald Lu & Partners 呂元祥建築師事務所

33rd Floor, Wu Chung House, 213 Queen's Road East, Wanchai, Hong Kong

**Tel** (852) 2891 2212    **Email** info@rlphk.com

**Fax** (852) 2834 5442    **Website** www.rlphk.com

### Company Data

**Year of Establishment** 1976

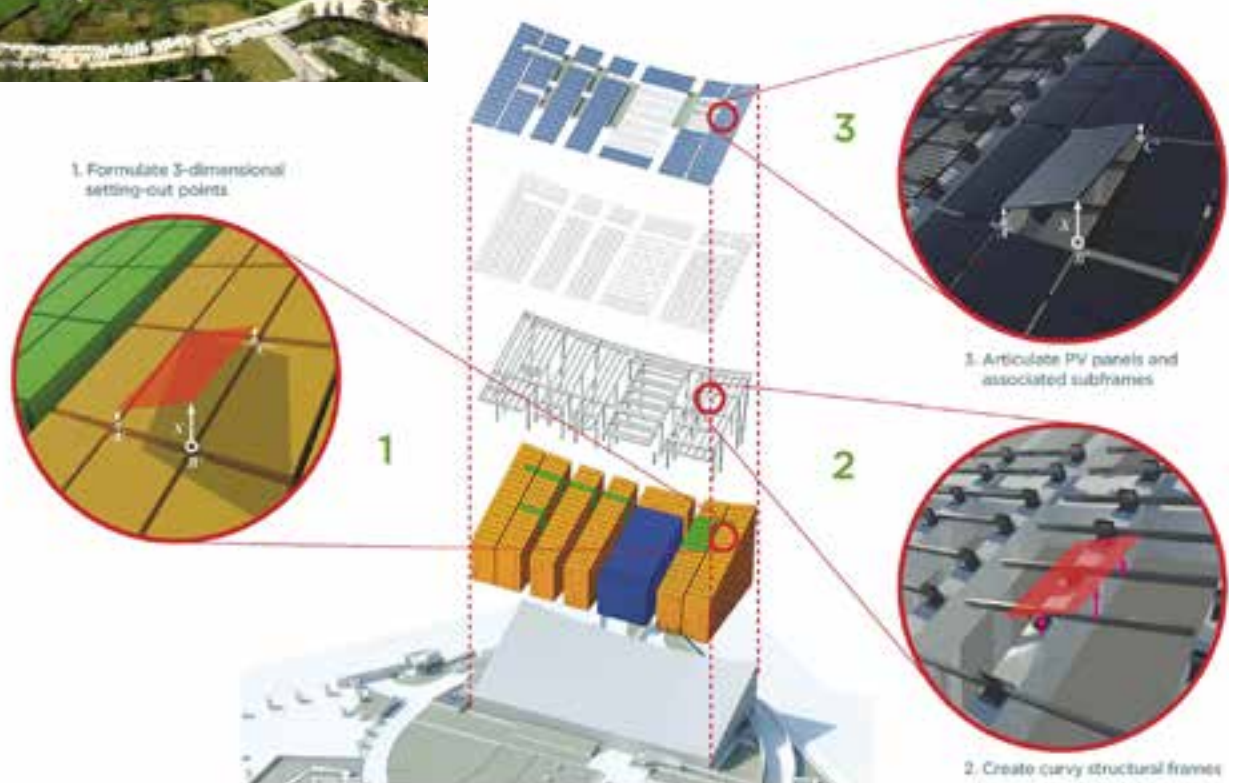
**Total No. of Staff** 600

### Company Profile

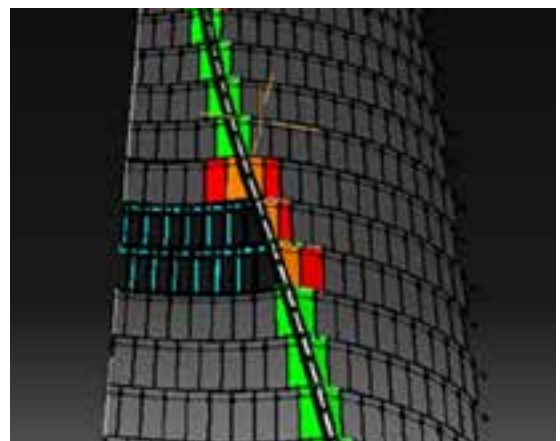
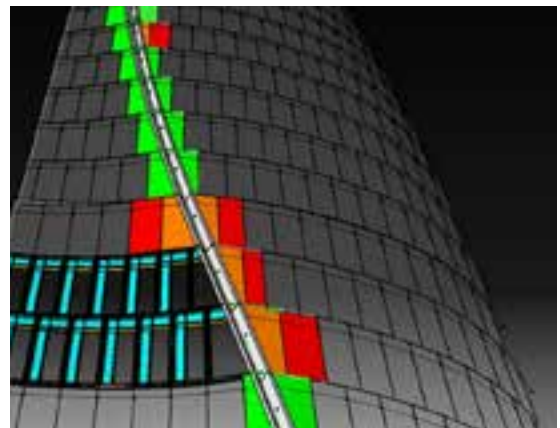
Ronald Lu & Partners (RLP) is a multi-disciplinary architecture and interior design firm, founded in Hong Kong in 1976 and dedicated to the delivery of world-class projects across the globe.

RLP is one of the pioneers of use of BIM technology in the city. As early as 2006, we successfully transformed the use of BIM in architectural projects from being a relatively simple and self-contained process into a real-time collaborative approach with input from consultants located around the world. The well-established BIM team has developed BIM best practices in design authoring, discipline coordination and contract documentation. Since 2015, we have incorporated BIM into our formal workflow and have also nurtured and developed our own BIM-proficient staff to carry out BIM management during the design and construction phases of a project.

### CIC Zero Carbon Building Hong Kong



Tianjin CTF Finance Centre  
Tianjin, China



*In collaboration with SOM*

**synch\_**

**SYNCH Limited**  
**同訊顧問有限公司**

Block A, 2/F, Hong Kong Industrial Building, 444-452 Des Voeux Road West

**Tel** (852) 6399 4950    **Email** [contact@synch.space](mailto:contact@synch.space)

**Fax** (852) N/A    **Website** <http://we.synch.space>

**Company Data**

**Year of Establishment** 2018

**Total No. of Staff** 50 or below

**Company Profile**

Synch Limited is a design and project management consultancy company specializing in strategic BIM planning, BIM project management, BIM contract management, BIM audit, and other professional architectural and BIM services. Founded by Architects and Building Professionals, our mission is to bring the most value out of building projects with innovative technologies and virtual design and construction. By implementing optimized workflow, project standards, BIM platform and innovative technologies, we increase efficiency in communication between stakeholders and project team members to achieve project objectives.



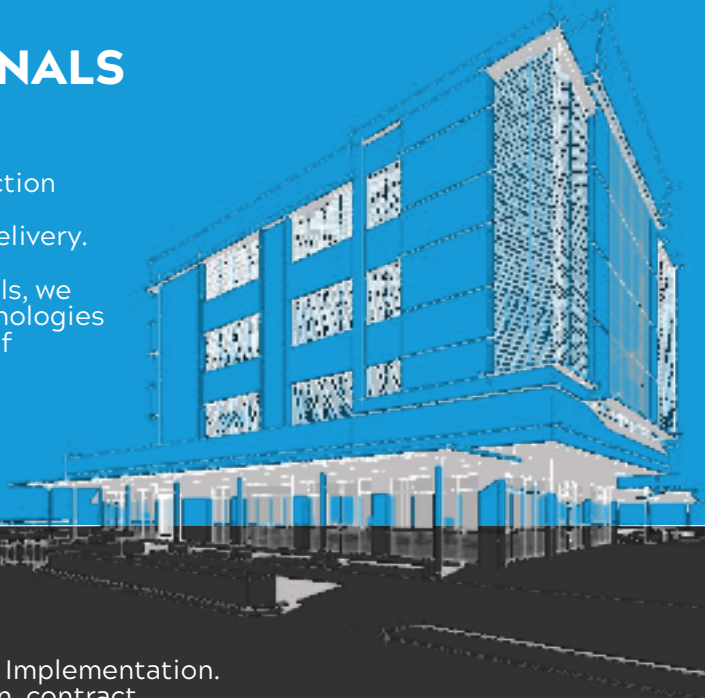
**SYNCHRONIZE VIRTUALITY WITH REALITY**

From Ideas to Drawings, BIM to Construction, As-built to Facility Management,  
 We synchronize information - enabling user experiences before it is built.

## WE ARE BUILDING PROFESSIONALS MAKING BIM WORK

With increasing complexity of construction projects, there is always room for improvement in efficiency of project delivery.

As Architects and Building Professionals, we understand how latest innovative technologies can improve efficiency at every stage of project delivery.



## OUR SERVICES

We specialise in BIM Management and Implementation. From concept to tender documentation, contract document preparation and on-site BIM workflow, we can assist you in successful project delivery with Building Information Management.

### BIM PROJECT MANAGEMENT



From establishing BIM objectives to setting up standards, workflows and validating deliverables, we provide complete BIM Project Management service to achieve project goals.

### BIM AUDIT



Quality of Building Information Model determines the value it can bring to your organization. We provide validation and audit service to ensure your Consultants and Contractors' deliverables are up to the standards for your use.

### BIM IMPLEMENTATION



From setting up the BIM Standard and BIM Workflow to BIM templates, our tailor-made BIM implementation service can upgrade your organisation's operational efficiency with BIM implementation.



## Syntegrate Limited 先機工程顧問有限公司

Unit B, 15/F CMA Building, 64 Connaught Rd Central, Central, Hong Kong

**Tel** (852) 6502 2403 **Email** [lionel@syntegrate.build](mailto:lionel@syntegrate.build)

**Fax** (852) 2276 4150 **Website** [www.syntegrate.build](http://www.syntegrate.build)

### Company Data

**Year of Establishment** 2013

**Total No. of Staff** 50 or below

### Company Profile

Syntegrate is a consultancy focused on the application of technology in the building industry. Their name comes from their approach to projects—they constantly strive to synthesise multiple disciplines and integrate the latest technologies. They utilize software and hardware tools in the area of Building Information Modeling and Management (BIM) to provide specialist services that assist in the planning, design, project management, construction, and operations of our built environment. Their clients include owners, developers, architects and engineers, project management companies, general contractors, trade subcontractors, specialist fabricators, and building operators. Syntegrate's objective is to leverage technology, in all its current forms, to realize the built environment more appropriately, more efficiently and more sustainably.







## 10 DESIGN

3/F, East Town Building, 41 Lockhart Road, Wanchai, Hong Kong

**Tel** (852) 3975 2010 **Email** info@10design.co

**Fax** (852) 3975 2000 **Website** www.10design.co

### Company Data

**Year of Establishment** 2010

**Total No. of Staff** 176

Architects and Designers 141

Technicians 15

Supporting Team 20

### Company Profile

10 DESIGN is a leading international partnership of Architects, Urbanists, Landscape Designers, and CGI Specialists. 10 DESIGN is an award winning practice of architects, based in Hong Kong, with offices in Shanghai, Edinburgh, Dubai and the City of Miami Beach. The firm works at a broad range of scales, from the design of individual buildings to cities across all sectors including corporate, retail, hospitality, residential, cultural and education.

10 DESIGN is committed to be on the cutting edge of industry innovations. To this end, we have been building up our capabilities in the Hong Kong and UK studios to deliver projects in BIM. We recognize as do many others in the industry that the future where the tools we design will morph into building management tools during the operational life of the buildings. That end game is already here in sophisticated markets, and it will not be long before the whole world embraces these innovations. We at 10 DESIGN are ready to take on these challenges.



ZHUHAI INTERNATIONAL CEC PHASE 2, Zhuhai, China  
international design competition 2016 - winner  
construction completion 2020

REARD 2017 | Gold  
S'ARCH Award 2018 | Honourable Mention





BLUEWATERS RESIDENCES, Dubai, UAE  
construction completion Q1 2018



SAADIYAT ISLAND CULTURAL DISTRICT RESIDENTIAL DEVELOPMENT, Abu Dhabi, UAE  
design completion 2016



KEYNE SAILOR CENTRE, Yangzhou, China  
construction completion 2019



WANCHAI SHIZIMEN MIXED USE DEVELOPMENT, Zhuhai, China  
design in progress



JINWAN INTERNATIONAL COMMERCE CENTRE, Zhuhai, China  
construction completion 2019



## Vircon Limited 雲建有限公司

Unit 701, 7th Floor, Pioneer Place, No. 33 Hoi Yuen Road, Kwun Tong, Hong Kong

**Tel** (852) 2617 2660

**Email** info@vircon.com.hk

**Fax** (852) 2617 2990

**Website** www.vircon.com.hk

### Company Data

**Year of Establishment** 2012

**Total No. of Staff** 80

### Company Profile

Vircon Limited is a Building Information Modeling (BIM) consultancy in Hong Kong, which specialize in the implementation and management of BIM Solution for the private and public sector. Our core team consists of Professors, Architects, Engineers, Project Managers, Software Specialists and Academia/Industry Advisers. We are supported by ~80 BIM professionals and BIM modelers from Hong Kong, Macau, China, and U.S.A. As a company or project grows more sophisticated in its use of BIM, our solutions offer “room to grow” for design and engineering teams to deliver increasingly innovative projects while continuously improving performance, constructability, cost and risk controls. Our services include: BIM Design & Modeling, BIM Project Management, BIM Training, BIM Enterprise Solution, Laser Scan Survey & Point Cloud, RFID, AR&VR&MR Solution and other advance design technology implementation.

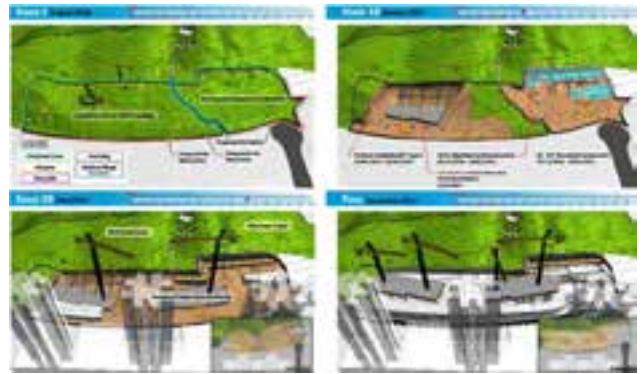
### Vircon Consulting Services



## Vircon Building Information Modeling (BIM) Solution



## Award Winning BIM Projects





## Wong Tung & Partners Limited 王董建築師事務所

18/F, Cityplaza 3, Taikoo Shing, Hong Kong

**Tel** (852) 2803 9888    **Email** hongkong@wongtung.com

**Fax** (852) 2513 1728    **Website** www.wongtung.com

### Company Data

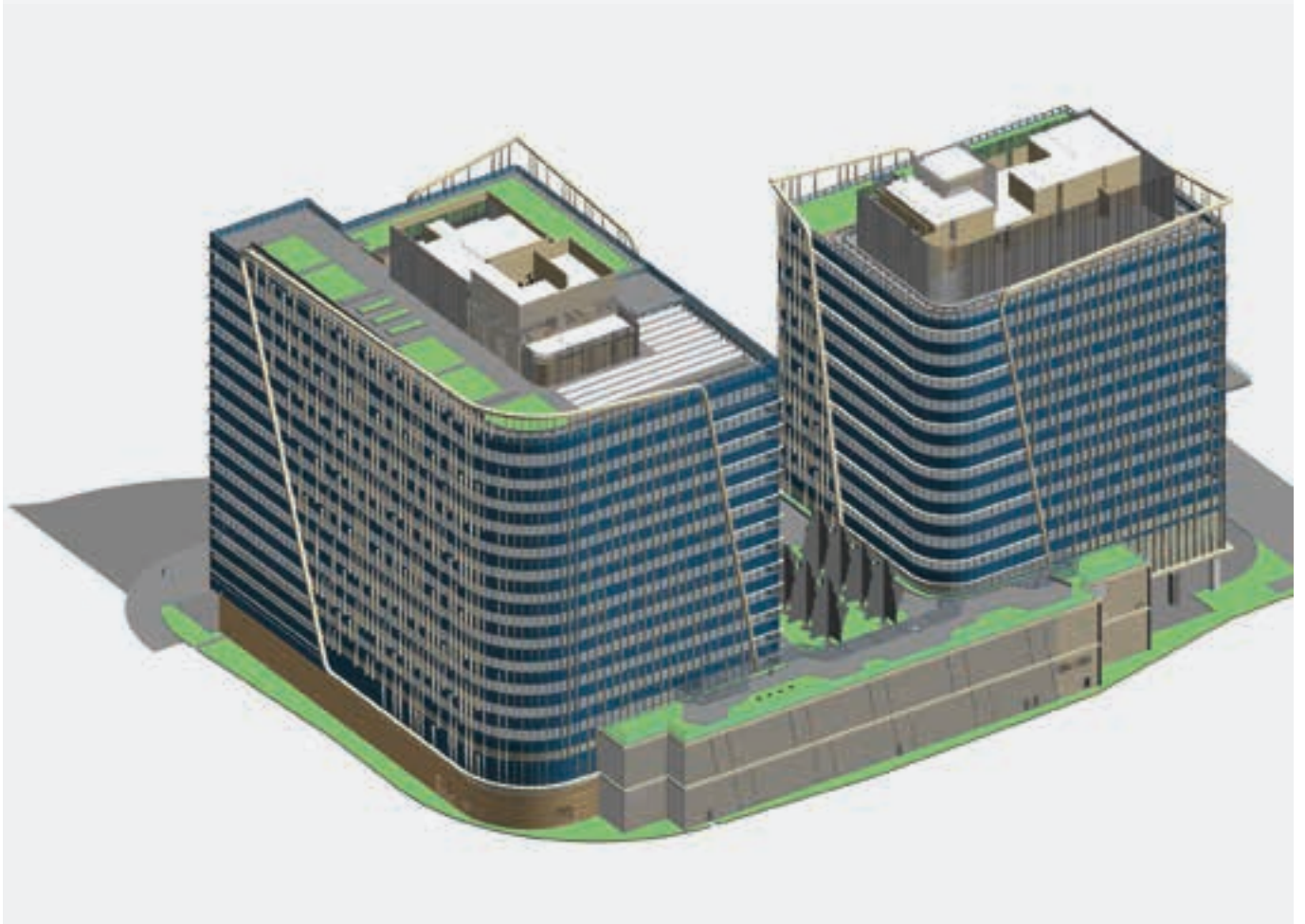
**Year of Establishment** 1963

**Total No. of Staff** 380

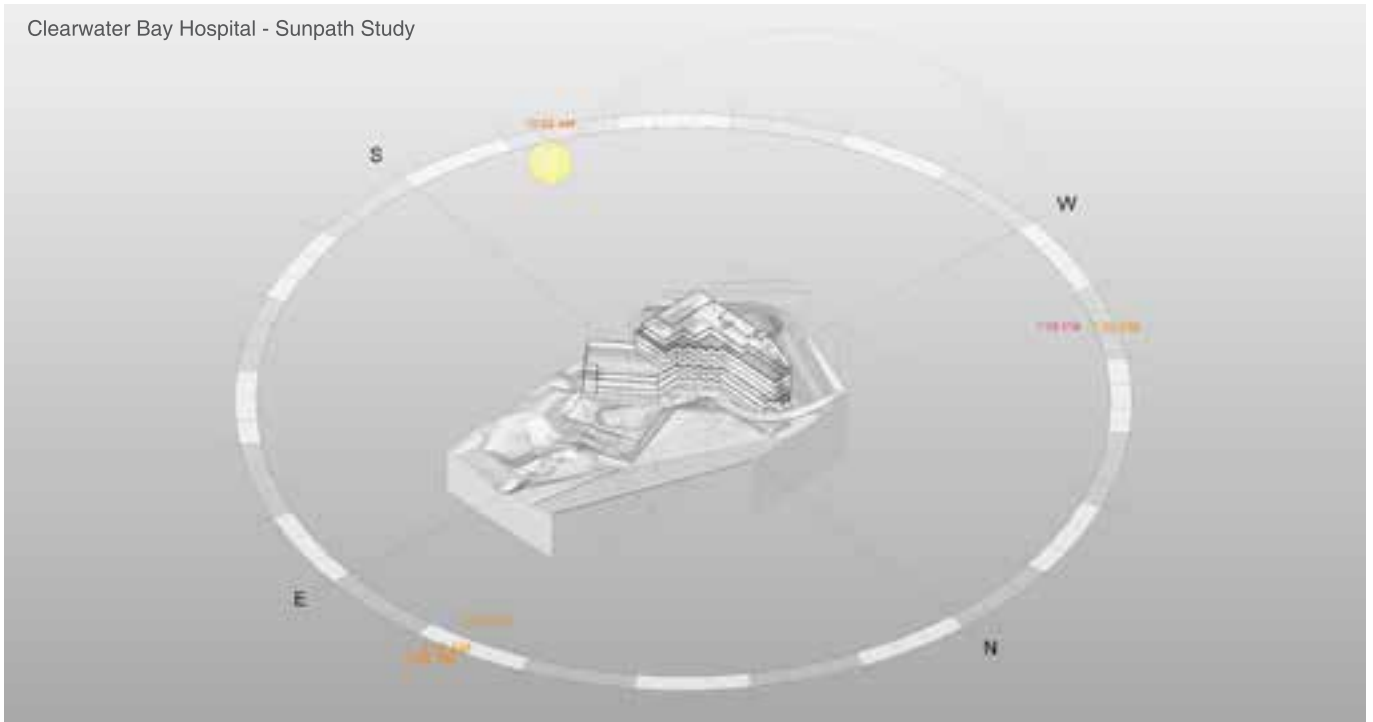
### Company Profile

Since founded in 1963, Wong Tung and Partners has established a track record for delivering large-scale signature projects in Hong Kong, Macao, and Mainland China. Our commitment to design quality, schedule, and budget has earned us numerous local and international awards. Driven by the growing complexity of today's construction, our firm has made a long-term commitment using BIM, to work more efficiently and accurately, and to provide additional values to our clients. We believe that BIM is NOT simply a software solution; it is a process, underpinned by both technology and a collaborative working mindset with all project stakeholders.

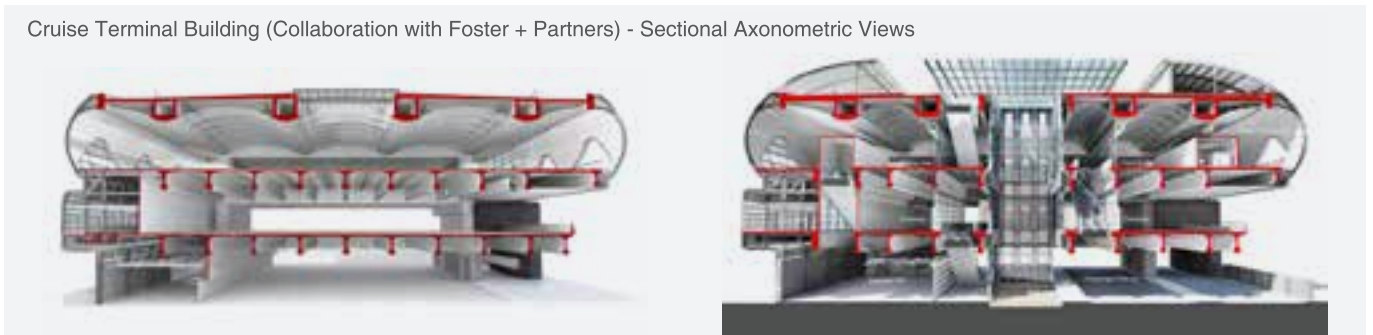
Hong Kong Science Park Expansion



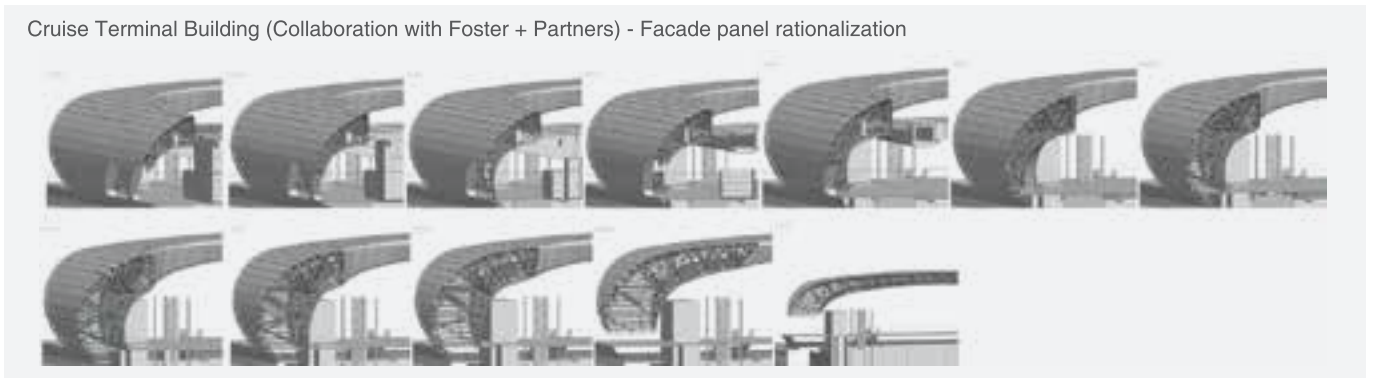
Clearwater Bay Hospital - Sunpath Study



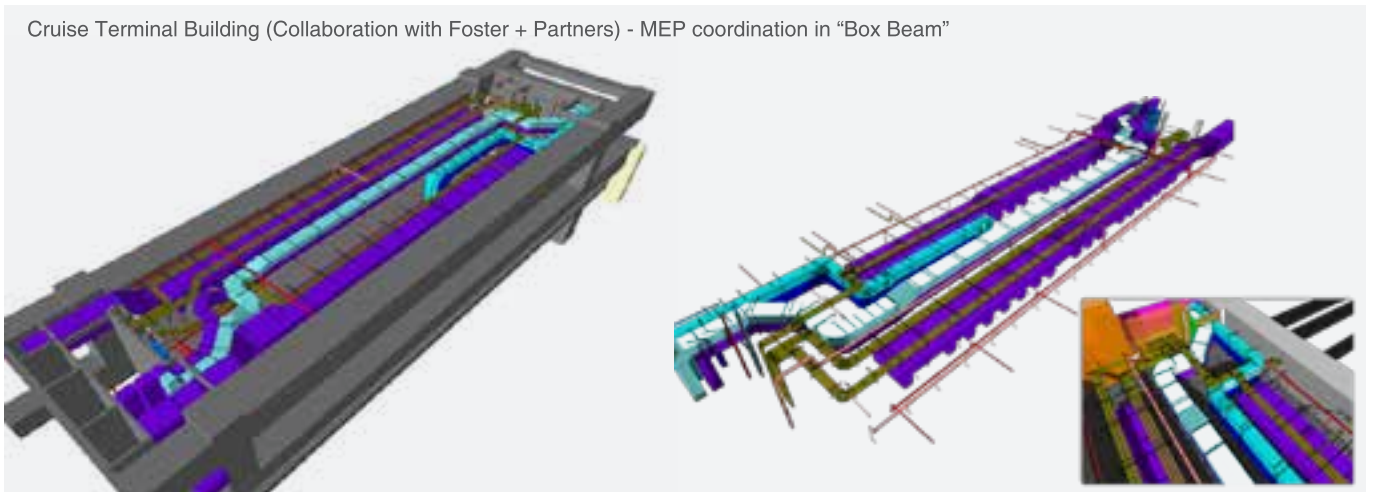
Cruise Terminal Building (Collaboration with Foster + Partners) - Sectional Axonometric Views



Cruise Terminal Building (Collaboration with Foster + Partners) - Facade panel rationalization



Cruise Terminal Building (Collaboration with Foster + Partners) - MEP coordination in "Box Beam"





**WSP**  
**科進**

7/F One Kowloon, 1 Wang Yuen Street, Kowloon Bay, Kowloon, Hong Kong

**Tel** (852) 2579 8899     **Email** info.hk@wsp.com

**Fax** (852) 2856 9902     **Website** www.wsp.com

**Company Data**

<b>Year of Establishment</b>	1978
<b>Total No. of Staff</b>	43,000 (worldwide)
	3,400 (Asia)

**Company Profile**

WSP is one of the world’s leading professional engineering consulting firms. We bring together approximately 43,000 talented people, based in 550 offices, across 40 countries to engineer projects that will help societies grow for lifetimes to come.

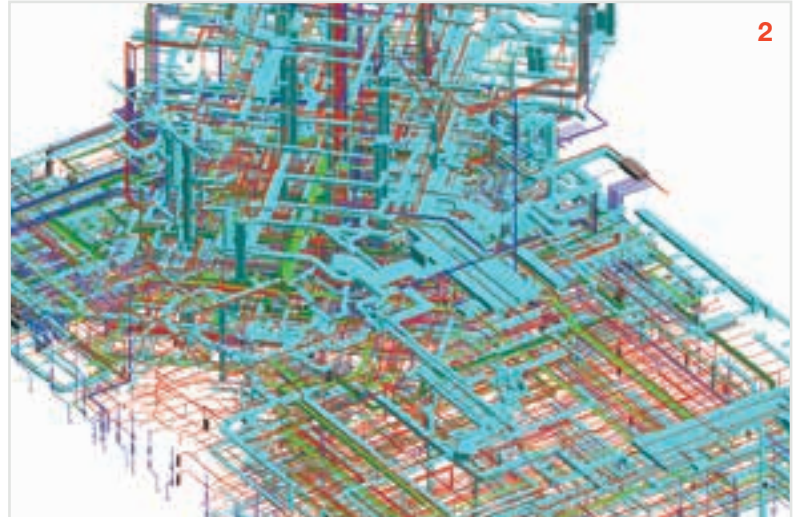
For over a decade, WSP has been at the forefront in the evolution and development of BIM (Building Information Modelling) technology. We utilize BIM technology and processes at different phases of the project life cycle, from sustainable demolition of old facilities, to design, construction and operation phases for our building, industrial, power & energy, transport & infrastructure and even city development projects. We also provide BIM management services to maximize the value of BIM throughout project lifecycle.



At WSP, we utilize BIM to create 3D digital models that enhance risk management processes, facilitate efficient information sharing and decision making amongst the project teams and other stakeholders, and also to realise productivity gains, shorten construction time schedules, and capitalize on significant cost savings over the project lifecycle.



1



2



3



4

1. Kerry Centre, Hong Kong
2. Ping An Financial Centre South Tower, Shenzhen, China
3. Tianjin Goldin Finance 117 Tower, China
4. Public Rental Housing Development at Hung Shui Kiu Area 13 Phase 2, Hong Kong



**CivilConnect Limited**  
**譽鋒顧問有限公司**

Unit 2302, 23/F, New World Tower 1, 18 Queen's Road Central, Hong Kong

**Tel** (852) 2628 0933    **Email** info@civilconnect.com.hk

**Fax** (852) 3005 6156    **Website** www.civilconnect.com.hk

**Company Data**

**Year of Establishment** 2011

**Total No. of Staff** 50 or below

**Company Profile**

CIVILCONNECT LIMITED provides engineering software solutions and services for AEC industry in Hong Kong and Asia Pacific Regions for over 10 years. Our company offers construction connected software & BIM Consultancy services in Architectural, Building, & Construction sectors. We comprise not only software experts but also professional engineers for BIM consulting services, professional training, and on-site deployment for BIM projects. Our team has been recognized in the BIM Industry for innovative solutions that meet our client's needs in an effective and efficient manner.



**CivilConnect Limited**  
 譽鋒顧問有限公司

*Software Powers the Engineer*



(852) 2628-0933 | info@civilconnect.com.hk | www.civilconnect.com.hk



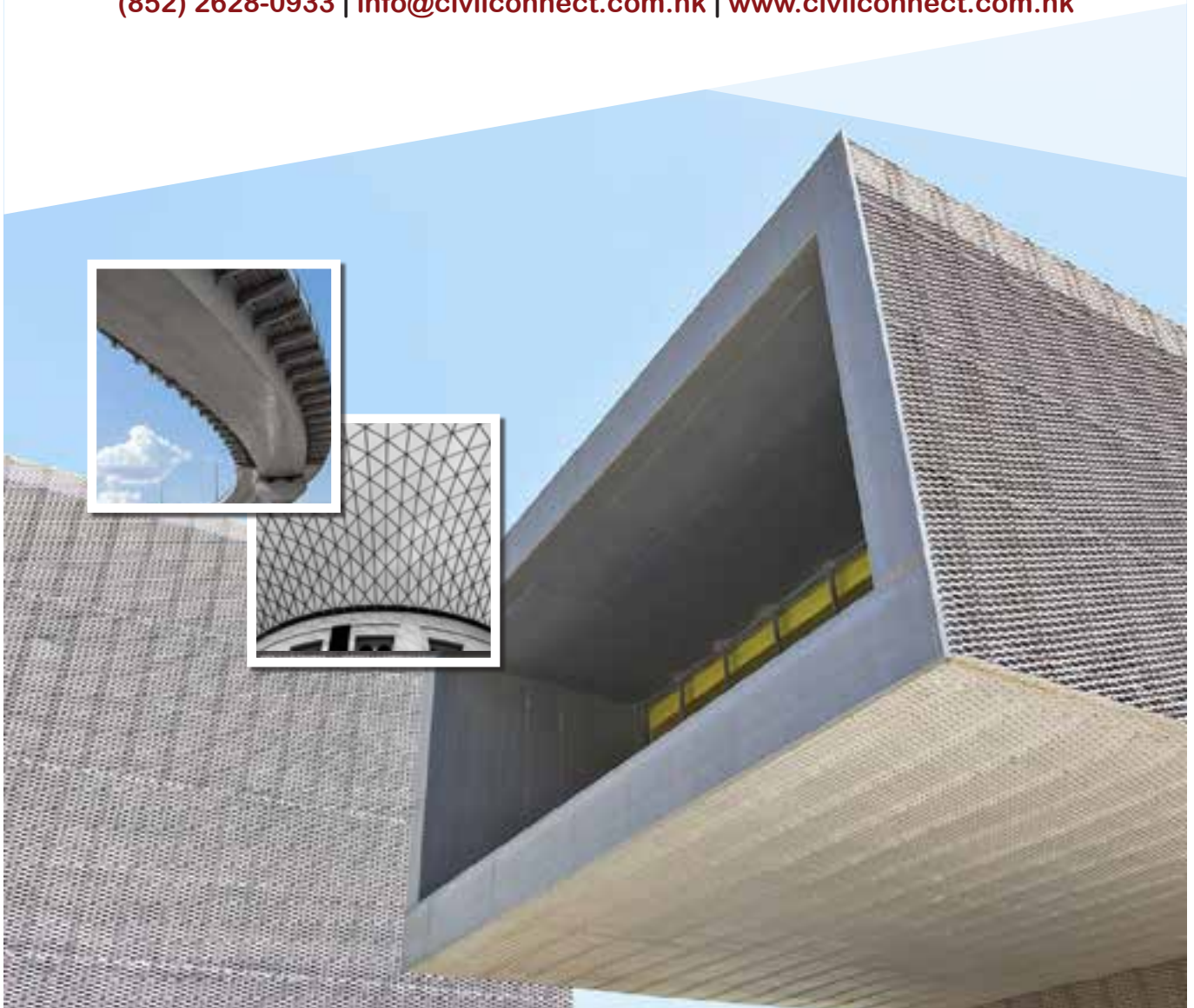


# CIVILCONNECT LIMITED

## OUR SERVICES

The Expert in **BIM and Structural Engineering Integration**  
BIM & Engineering Design Software  
BIM Consultancy and Training Services

(852) 2628-0933 | [info@civilconnect.com.hk](mailto:info@civilconnect.com.hk) | [www.civilconnect.com.hk](http://www.civilconnect.com.hk)





## GRAPHISOFT Asia Limited 圖軟亞洲有限公司

Admiralty Centre, Tower 2/Level 11, 18 Harcourt Road, Admiralty.

**Tel** (852) 3975 3260     **Email** mail@graphisoft.com.hk

**Fax** (852) N/A     **Website** www.graphisoft.com.hk

### Company Data

**Year of Establishment** 2011

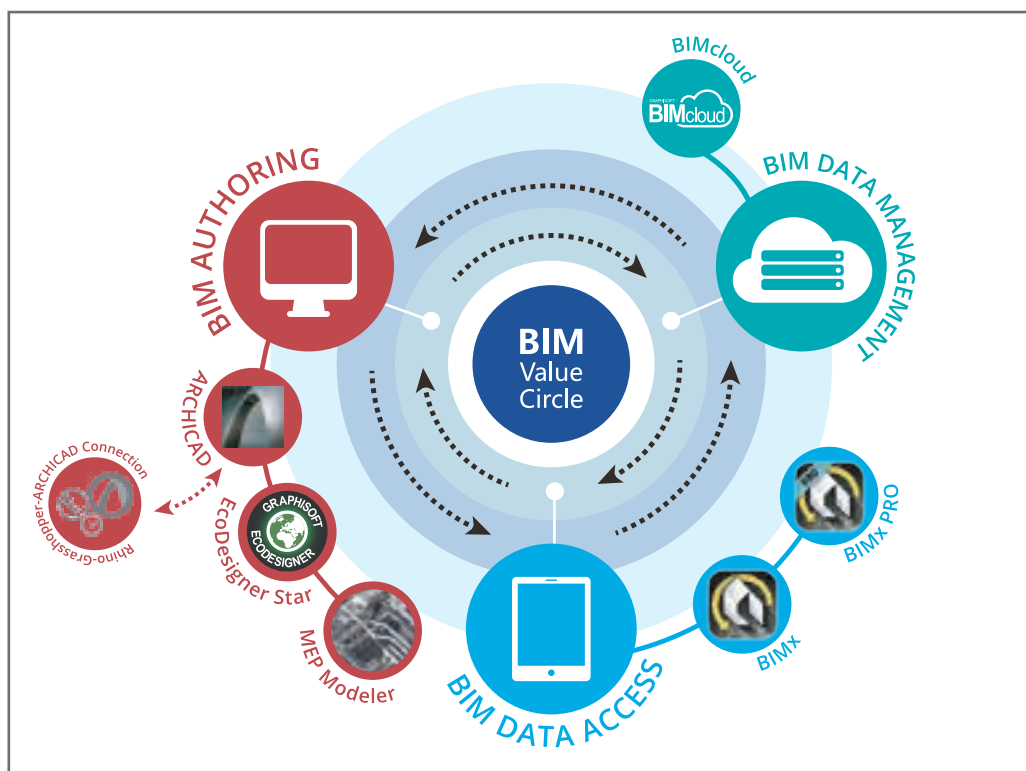
**Total No. of Staff** 50 or below

### Company Profile

GRAPHISOFT® ignited the BIM revolution in 1984 with ARCHICAD®, the industry first BIM software for professionals of the Architectural, Engineering and Construction (AEC) Industry. GRAPHISOFT continues to lead the industry with innovative solutions such as its revolutionary BIMcloud®, the world's first real-time BIM collaboration environment, EcoDesigner STAR, the world's first fully BIM-integrated "GREEN" design solution and BIMx®, the world's leading mobile app for BIM visualization. GRAPHISOFT has been a part of the Nemetschek Group since its acquisition in 2007. GRAPHISOFT Hong Kong Ltd. was established in November 2011, and serves as the hub of GRAPHISOFT's activities throughout Asia. GRAPHISOFT is committed to leading and shaping the future of BIM in Hong Kong and throughout Asia.

## BIM – the GRAPHISOFT way

As the BIM value circle shows, GRAPHISOFT BIM technology rests on three pillars: the BIM authoring tool (ARCHICAD, MEP Modeler, EcoDesigner STAR), which makes the creation of BIM data possible; BIM data management (the BIMcloud product family), which is responsible for sharing only the relevant data between professionals in a real-time collaborative manner; and BIM data access (the BIMx product family), which allows users — even for clients, authorities or construction workers who have never learnt how to use a complex BIM software before—to view and reflect on the BIM data. All this is available anytime and anywhere, and represents a true democratisation of BIM.



University Library Freiburg Germany  
DEGEO ARCHITEKTEN [www.degeo.net](http://www.degeo.net)  
Photo © Barbara Bühler

GRAPHISOFT  
**ARCHICAD 22**

**BIM**  
INSIDE & OUT

GRAPHISOFT Asia Limited • [www.graphisoft.com.hk](http://www.graphisoft.com.hk) • +852 39753260 • [mail@graphisoft.hk](mailto:mail@graphisoft.hk)



## Form.Welkin Limited 天行凝方有限公司

2/F, Chinachem Tower, 34-37 Connaught Road Central, Hong Kong  
**Tel** (852) 3605 3322    **Email** info@formwelkin.com  
**Fax** (852) 3605 3399    **Website** www.formwelkin.com

### Company Data

**Year of Establishment** 2009  
**Total No. of Staff** 50 or below

### Company Profile

Form.Welkin Limited is a business arm of Welkin Systems Limited, as a well-known Hong Kong IT Training company since 1990. In 2009, a group of professionals bring their insight of BIM related technology will be the future of construction industry, they form a new stream: Form.Welkin to oversee BIM/CAD/3D related training and services. We provide high-quality Autodesk official training courses at our training centres at Central and Mongkok. We earn your trust in us by being Autodesk Training Partner since 2003 and Autodesk Best Authorized Training Center in Hong Kong in 2007. The BIM curriculum developed by Form.Welkin has the widest coverage on different BIM skillset such as BIM modeling, customization, management, analysis and standard compatibility. Further achievements like Autodesk Professional Certifications are available to apply and prepare in our Centre.

### 全方位 BIM 培訓架構 Form.Welkin BIM Curriculum





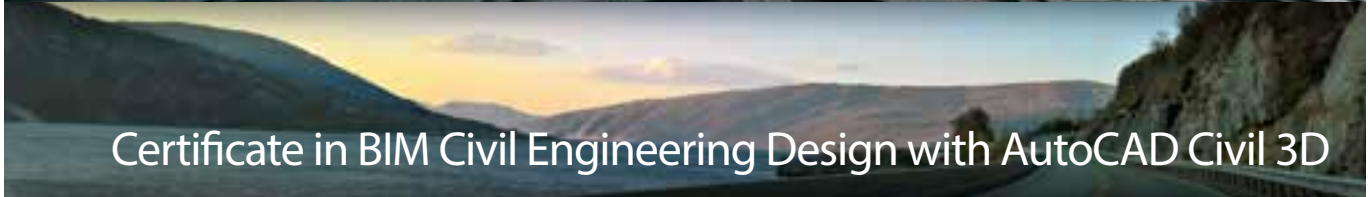
Certificate in BIM Design with Autodesk Revit



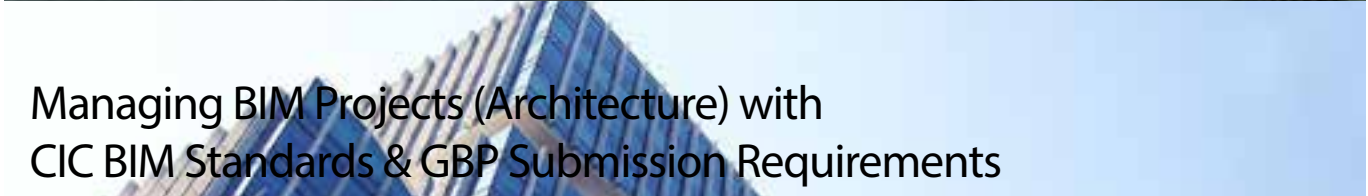
Advanced Certificate in Revit MEP



Advanced Certificate in Revit Structure



Certificate in BIM Civil Engineering Design with AutoCAD Civil 3D



Managing BIM Projects (Architecture) with  
CIC BIM Standards & GBP Submission Requirements



Advanced Certificate in BIM Analysis with Navisworks



BIM in Team Practice



BIM for Construction Managers



Managing BIM Projects (Building Services)  
with EMSD BIM-AM Standards & Guidelines



Member of VTC Group  
VTC 機構成員

## Hong Kong Institute of Vocational Education (IVE) 香港專業教育學院

IVE BIM Centre, Room 216, IVE (Morrison Hill), 6 Oi Kwan Road, Wan Chai, Hong Kong

**Tel** (852) 2435 9423 **Email** edit@vtc.edu.hk

**Fax** (852) N/A **Website** <http://www.ive.edu.hk>

### Company Data

**Year of Establishment** 1982

**Total No. of Staff** Above 300

### Company Profile

The Hong Kong Institute of Vocational Education (IVE) is a leading vocational and professional education provider in Hong Kong, committed to nurturing professionals valued by industries. It has been evolving in tandem with the economic development of Hong Kong, building a competent and innovative workforce needed in a knowledge-based economy. Currently, IVE incorporated BIM training into the curriculum of Higher Diploma in Civil Engineering, Building Studies, Surveying, Building Technology with Interior Design, Architectural Studies, Environmental Engineering, Building Services Engineering and Architectural Technology & Design. The Engineering Discipline In-Service Training Office (EDITO) also offer BIM in-service training programmes to the industry.

## Continuing Professional Development Programmes

### BIM Certified Expert Level I Examination [1525A]\*

Available Categories:

- CE I Basic (ArchiCAD)
- CE I Basic (Revit)

### BIM Certified Expert Level II Examination [1525B]\*

Available Categories:

- CE II Architecture (ArchiCAD)
- CE II Architecture (Revit)
- CE II Structure (Revit)
- CE II MEP (Revit)
- CE II Revit Families

\*Recognized by the Hong Kong Institute of Building Information Modelling

### BIM Training Courses:

- Building Information Modelling (BIM) Certified Expert Level I Basic Training Course
- Building Information Modelling (BIM) Certified Expert Level II MEP Training Course
- Building Information Modelling (BIM) Certified Expert Level II Structure Training Course
- Building Information Modelling (BIM) Certified Expert Level II Architecture Training Course
- Building Information Modelling (BIM) ArchiCAD Basic Training Course
- Building Information Modelling (BIM) ArchiCAD Advanced Training Course
- Building Information Modelling (BIM) 5D Basic Training Course
- Introductory Workshop on Building Information Modelling (BIM) for Management

工程學科

**ENGINEERING**  
YOUR FUTURE  
工程 創未來



Member of VTC Group  
VTC 機構成員

## Professional Certificate in Building Information Modelling (Building Works) [EG424115P]

**Core Module:**  
Building Information Modelling for  
Construction Management (30 hours)

**Elective Modules\*** (Select any 1 out of 3)

- BIM - Architecture (48 hrs)
- BIM - Structure (48 hrs)
- BIM - Building Services (48 hrs)

**Core Module:**  
Building Information Modelling Basic\*  
(12 hours)

*\*Students are qualified to apply for member of the Hong Kong Institute of Building Information Modelling (HKIBIM) CE (classified) if they pass the examination with a good grade.*



Professional Certificate in Building Information Modelling (Building Works) is recognised under the Qualifications Framework (QF).  
For details, please visit: [www.hkqf.gov.hk](http://www.hkqf.gov.hk).

QR Registraion No.:	17/000498/L4
Registraion Validity Period:	29/05/2017 to 31/08/2021
QF Level:	Level 4

**Remarks:**

This programme is under Engineering Training Subsidy Scheme. Successful applicants will be refunded 60% of the tuition fees, subject to a maximum of \$45,000 per person.

Enquiries 查詢  
T: 2435 9423  
E: EDiT@vtc.edu.hk  
W: <https://EDiT.vtc.edu.hk>



IVE Engineering Discipline  
In-service Training

Supporting Organization:





## HKU School of Professional and Continuing Education (HKU SPACE) 香港大學專業進修學院

HKU SPACE Island East Campus, 494 North Point, Hong Kong

**Tel** (852) 3762 0070

**Email** paula.lee@hkuspace.hku.hk

**Fax** (852) 2214 1870

**Website** <https://hkuspace.hku.hk/interest/architecture-environment-and-housing/digital-building-design>

### Company Data

**Year of Establishment** 1957

**Total No. of Staff** Above 300

### Company Profile

HKU SPACE, as an incorporated subsidiary of the University of Hong Kong, has been the continuing education arm of the University since 1957 with a mission to extend lifelong learning opportunities for personal, professional and career advancement for people from all walks of life and the community. With over 1,000 full-time staff and many more part-time teachers, HKU SPACE is the leading local continuing education hub and we offers many award-bearing and professional programmes. All programmes are designed and monitored with our Quality Assurance procedures in terms of academic and affairs qualities.



HKU SPACE BIM programmes are taught by BIM specialists and experienced Architects / Engineers. The programmes are designed for continuing professional development targeted at AEC industry professionals, managers, team leaders as well as BIM specialist coordinators. The programme aims to enhance students' ability, experience and knowledge in the use of BIM in the following building project stages:



Feasibility and Site Analysis	✓
Design Planning	✓
Design 3D Coordination	✓
Virtual Reality (CAVE)	✓
Drawing Generation	✓
Construction Phasing Planning	✓
As-Built Modelling	✓

Please visit :  
HKUSPACE Digital Building Design webpage



Supporting Organization:





# 建築



Enquiries: 3762 0070  
paula.lee@hkuspace.hku.hk

Architectural Studies  
Housing, Transport and Built Environment

## Certificate in Building Information Modelling 建築信息模型證書



Course code: AS010A  
Duration: 12 months (total 99 hours)  
QF level: 3



*The Certificate programme is accredited by the HKIBIM as fulfilling the academic requirement of its Associate Membership.*

Core Modules: Introduction to BIM  
(57 hours) BIM General Practice  
BIM Coordination

Elective Module: BIM Practice for Architecture  
(42 hours) BIM Practice for Structure  
(select one) BIM Practice for Building Services

*This certificate programme aims to equip students with practical knowledge and specialized skills to operate and coordinate a BIM project and be specialised in one of the three specialism streams.*



## Strategic Application of Building Information Modelling in Architecture and Project Management 建築信息模型 - 策劃及管理課程



Course code: ARCH-9048  
Duration: 3 months (total 27 hours)

*This course focus on the managerial and strategic side of BIM application in terms of implementation, resource management, and overseeing a multi-discipline BIM team to deliver a BIM project.*

## Technical Application of Building Information Modelling in Architecture and Project Management 建築信息模型 - 技術應用課程



Course code: ARCH-9047  
Duration: 4 months (total 36 hours)

*This course focus on the technical side of BIM application to design, coordinate with consultants and prepare architectural documentation for construction and submission for a BIM project.*



## Vocational Training Council (VTC) 職業訓練局

VTC Tower, 27 Wood Road, Wan Chai, Hong Kong

**Tel** (852) 2835 4559 **Email** clo@vtc.edu.hk

**Fax** (852) N/A **Website** <http://www.vtc.edu.hk>

### Company Data

**Year of Establishment** 1982

**Total No. of Staff** Above 300

### Company Profile

Vocational Training Council (VTC), established in 1982, has always been at the forefront of vocational and professional education and training (VPET).

As a statutory body, we exist within Hong Kong education system to ensure the skills of the Hong Kong workforce remain fresh and future ready. Our mandate to provide VPET is vital in meeting industry needs, and in fulfilling the aspirations of the quarter of a million young people and in-service workers who attend a programme every year at one of our 13 member institutions.

## Continuing Professional Development Programmes

### BIM Certified Expert Level I Examination [1525A]\*

Available Categories:

- CE I Basic (ArchiCAD)
- CE I Basic (Revit)

### BIM Certified Expert Level II Examination [1525B]\*

Available Categories:

- CE II Architecture (ArchiCAD)
- CE II Architecture (Revit)
- CE II Structure (Revit)
- CE II MEP (Revit)
- CE II Revit Families

*\*Recognized by the Hong Kong Institute of Building Information Modelling*

### BIM Training Courses:

- Building Information Modelling (BIM) Certified Expert Level I Basic Training Course
- Building Information Modelling (BIM) Certified Expert Level II MEP Training Course
- Building Information Modelling (BIM) Certified Expert Level II Structure Training Course
- Building Information Modelling (BIM) Certified Expert Level II Architecture Training Course
- Building Information Modelling (BIM) ArchiCAD Basic Training Course
- Building Information Modelling (BIM) ArchiCAD Advanced Training Course
- Building Information Modelling (BIM) 5D Basic Training Course
- Introductory Workshop on Building Information Modelling (BIM) for Management

工程學科

**ENGINEERING**  
YOUR FUTURE  
工程 創未來



Member of VTC Group  
VTC 機構成員

## Professional Certificate in Building Information Modelling (Building Works) [EG424115P]

**Core Module:**  
Building Information Modelling for  
Construction Management (30 hours)

**Elective Modules\*** (Select any 1 out of 3)

- BIM - Architecture (48 hrs)
- BIM - Structure (48 hrs)
- BIM - Building Services (48 hrs)

**Core Module:**  
Building Information Modelling Basic\*  
(12 hours)

*\*Students are qualified to apply for member of the Hong Kong Institute of Building Information Modelling (HKIBIM) CE (classified) if they pass the examination with a good grade.*



Professional Certificate in Building Information Modelling (Building Works) is recognised under the Qualifications Framework (QF).  
For details, please visit: [www.hkqf.gov.hk](http://www.hkqf.gov.hk).

QR Registraion No.:	17/000498/L4
Registraion Validity Period:	29/05/2017 to 31/08/2021
QF Level:	Level 4

**Remarks:**

This programme is under Engineering Training Subsidy Scheme. Successful applicants will be refunded 60% of the tuition fees, subject to a maximum of \$45,000 per person.

Enquiries 查詢  
T: 2435 9423  
E: EDiT@vtc.edu.hk  
W: <https://EDiT.vtc.edu.hk>



IVE Engineering Discipline  
In-service Training

Supporting Organization:





## Autodesk Industry Advisory Board (AIAB) 歐特克行業顧問委員會

Suite 1405, 14 Floor, Great Eagle Centre, 23 Harbour Road, Wanchai, Hong Kong

**Tel** (852) 2358 8186    **Email** cejcheng@ust.hk

**Fax** (852) 2358 1534    **Website** <http://aiab.org/>

### Company Data

**Year of Establishment** 2005

**Total No. of Staff** 100 – 300

### Company Profile

AIAB is a non-profit making interest group that acts as a bridge between the industry and Autodesk for solid and bi-directional communications. AIAB, as its name suggests, has an advisory role. Its main objectives include, but not limited to:

- Act as a platform for technology exchange and experience sharing
- Express and share opinions and views on technology development
- Promote the development, usage and awareness of design technology in HK, mainland China and Macau.





**A I A B**  
Autodesk Industry Advisory Board



## HKUST BIM Lab 香港科技大學 BIM 實驗室

Department of Civil and Environmental Engineering, The Hong Kong University of Science and Technology, Clear Water Bay, Kowloon, Hong Kong

**Tel** (852) 2358 8186    **Email** cejcheng@ust.hk

**Fax** (852) 2358 1534    **Website** www.ust.hk

### Company Data

**Year of Establishment** 2010

**Total No. of Staff** 50 or below

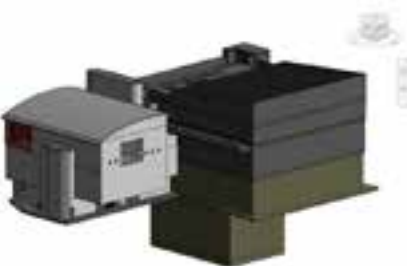
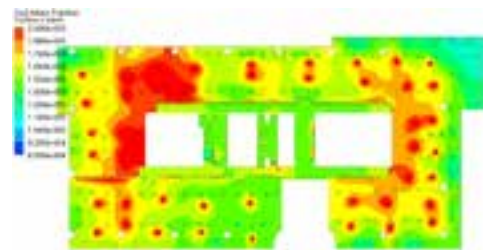
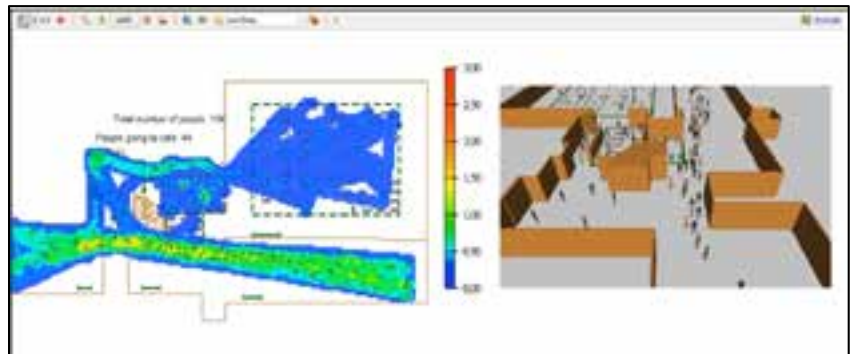
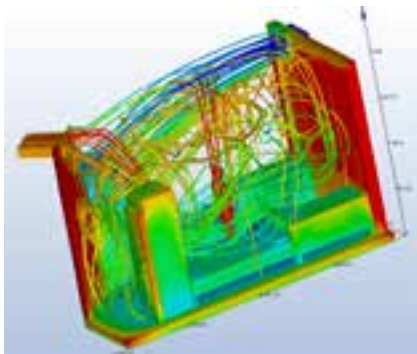
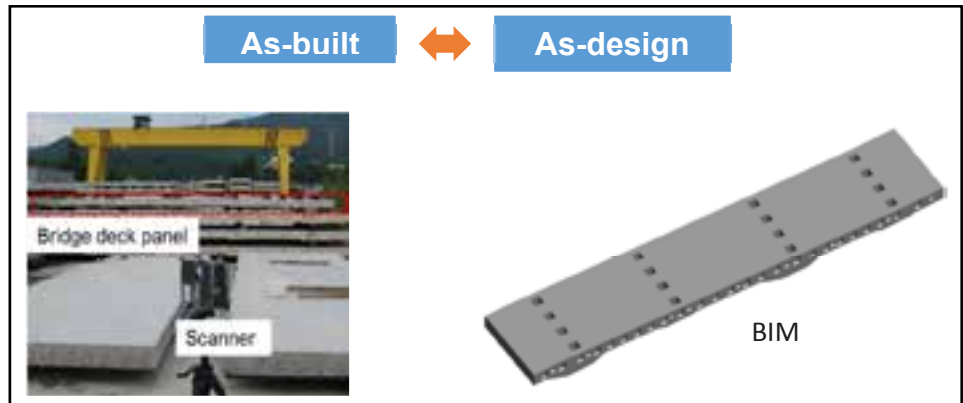
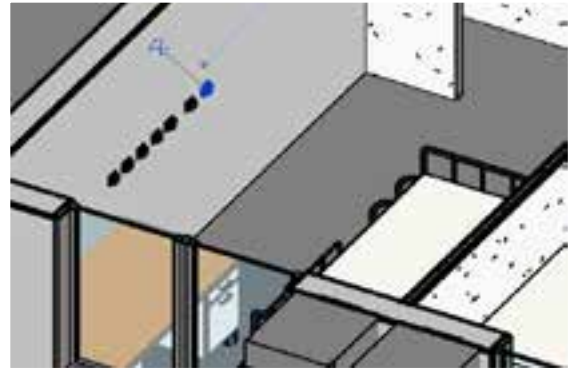
### Company Profile

HKUST BIM Lab is a research and development organization rooted in the Hong Kong University of Science and Technology. Currently, the BIM lab has 15 researchers, including professors and PhD/MPhil graduates, and 16 alumnus around the world. The research interests of the BIM lab include BIM application through the lifecycle of the buildings and mega-projects, BIM and GIS integration, computer vision application to the AEC industry, green building analysis, VR/AR/MR, automation in construction, etc. The BIM lab also has various international collaborations with different research institutes in America, Australia, Mainland China, Singapore, and South Korea.



**We conduct research and training on:**

- Building Information Modeling (BIM)
- Internet of Things (IoT) and RFID
- Laser Scanning and BIM Reconstruction
- Virtual Reality and Mixed Reality
- Computer Vision and AI
- Smart and Sustainable Construction
- Smart and Green Buildings





Quality • Value • Innovation • Service  
品質 • 價值 • 創新 • 服務







**Question today  
Imagine tomorrow  
Create for the future**

WSP is one of the world's leading professional engineering consulting firms. We bring together approximately 43,000 talented people, based in 550 offices, across 40 countries to engineer projects that will help societies grow for lifetimes to come.

For over a decade, WSP has been at the forefront in the evolution and development of BIM technology. We utilize BIM technology and processes at different phases of the project life cycle, from sustainable demolition of old facilities, to design, construction and operation phases for our building, industrial, power & energy, transport & infrastructure and even city development projects.



華營建築有限公司  
CR CONSTRUCTION COMPANY LIMITED

浙建集團



成為一間以推動建築業向前，  
以人為本並以港為家的企業。

With Hong Kong as the home base, to be a people-oriented company  
to drive the construction industry forward.



CR Construction Company Limited



華營建築有限公司  
CR Construction Company Limited



www.cr-construction.com.hk



協興  
HIP HING

新創建集團成員  
Member of NWS Holdings

THE HIP HING SPIRIT

Committed,  
Professional  
and United



協興志  
承擔·團結 成就專業  
COMMITTED, PROFESSIONAL AND UNITED

Registration Nos.: GBC7/99, SC(F) 37/99, SC(SF) 36/99



## BIM AND THE FUTURE OF AEC

BIM (Building Information Modeling) is an intelligent 3D model-based process that gives architecture, engineering, and construction (AEC) professionals the insight and tools to more efficiently plan, design, construct, and manage buildings and infrastructure.



Advanced  
Construction  
Information  
Development Ltd.



EDUCATION

A.C.I.D. offers professional training courses at all professional levels. Both at BIM Studio or on site.



CONSULTING

A.C.I.D. offers consulting services to all BIM related business from project inception, design, construction and operational phases to different organizations.



PROJECT MANAGEMENT

A.C.I.D.'s project team assists the client and team to carry out the BIM process in the project.

HONG KONG WUHAN SHENZHEN SHANGHAI

A.C.I.D. has been dedicated to providing clients with highest quality Architectural and Project Management services by applying advanced technologies like BIM, computational application and parametric modelling. We provide clients with the most efficient and feasible solutions on complex and difficult design, as well as construction and management issues. Specializing in BIM education and training, we also strive to offer professional industry-wide BIM training courses.



A.C.I.D. Managing Director David Fung (Second from Right) awarded BIMer of the Year, BIM Excellence Awards 2014, Construction Industry Council, Hong Kong.



▲ Hong Kong  
Advanced Construction Information Development Ltd.

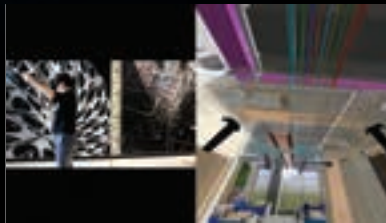
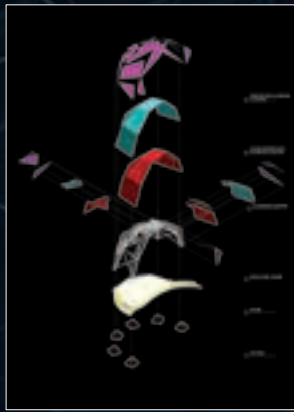
◀ WuHan  
▼ ShanHai  
华科优建工程信息发展有限公司



ShenZhen



ShanHai

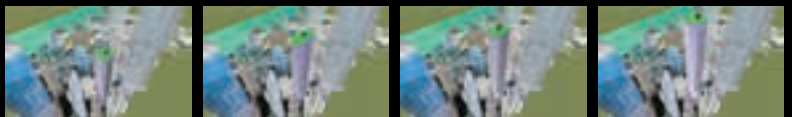


### Selected Projects

Heritage & Conservation Work  
Leisure Park & Landscaping  
Commercial  
Residential  
Hospital  
Educational  
Master Planning  
Institutional

### Specialties

Photogrammetry  
Virtual Reality & Augmented Reality  
View Engineering  
BIM Modelling & Management  
Facility & Asset Management  
BIM Standards



# Providing constructive solutions

---

Currie & Brown is a leading physical assets management and construction consultancy driven by innovation. We are global in our reach and office network, but also local in our delivery and relationships.

**60+** | **1,900** | **90+**  
**offices** | **staff** | **years**

Asia Pacific | Americas | Europe | India | Middle East

[www.curriebrown.com](http://www.curriebrown.com)

**Cost management and quantity surveying**

---

**Project management**

---

**Construction programming/  
scheduling advisory**

---

**Advisory services**

## ACKNOWLEDGEMENT

### Platinum Sponsors



### Gold Sponsors



### Silver Sponsor



### Information Bag Sponsor



# The Hong Kong Institute of Building Information Modelling

General Post Office (GPO) Box No. 2259, Hong Kong

 [info@hkibim.org](mailto:info@hkibim.org)

 [hkibim](https://www.facebook.com/hkibim)

 [The Hong Kong Institute of Building Information Modelling \(HKIBIM\)](https://www.linkedin.com/company/hkibim)

 [hkibim](https://twitter.com/hkibim)

 [hkibim](https://www.instagram.com/hkibim)

[www.hkibim.org](http://www.hkibim.org)

